



SIG ROOFING COMPLETE SOLAR SOLUTIONS

www.sigroofing.co.uk/solar

SIG ROOFING



COMPLETE SOLAR SOLUTIONS FOR YOUR CUSTOMERS

With SIG Roofing's products and support, you can now help your customers make a switch to renewable energy.

With over 105 branches throughout the UK, dedicated solar hubs and training facilities, we can provide you with all the products and services you need to offer solar options on all types of roofs.

THE SIG ROOFING SOLAR PACKAGE FOR ROOFING CONTRACTORS

How we can support you with solar installations



EXPERIENCE & KNOWLEDGE

Whether you're looking to install solar panels on houses or business premises, or you're looking to expand your solar energy knowledge, our team of experts are here to help.



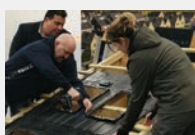
DESIGN SERVICE

Our experienced team will work with you to develop a plan that maximises the roof space for renewable energy.



QUALITY PRODUCTS

From solar panels to inverters, we have everything you need for your project with renewable solar energy from a full range of roof mountings to all associated solar equipment.



TRAINING

We work closely with suppliers to offer training that will support your knowledge and skills necessary to install solar equipment alongside your roofing projects.

For more details on the range of solar solutions for your next project contact us on:

solar@sigroofing.co.uk or visit **www.sigroofing.co.uk/solar**

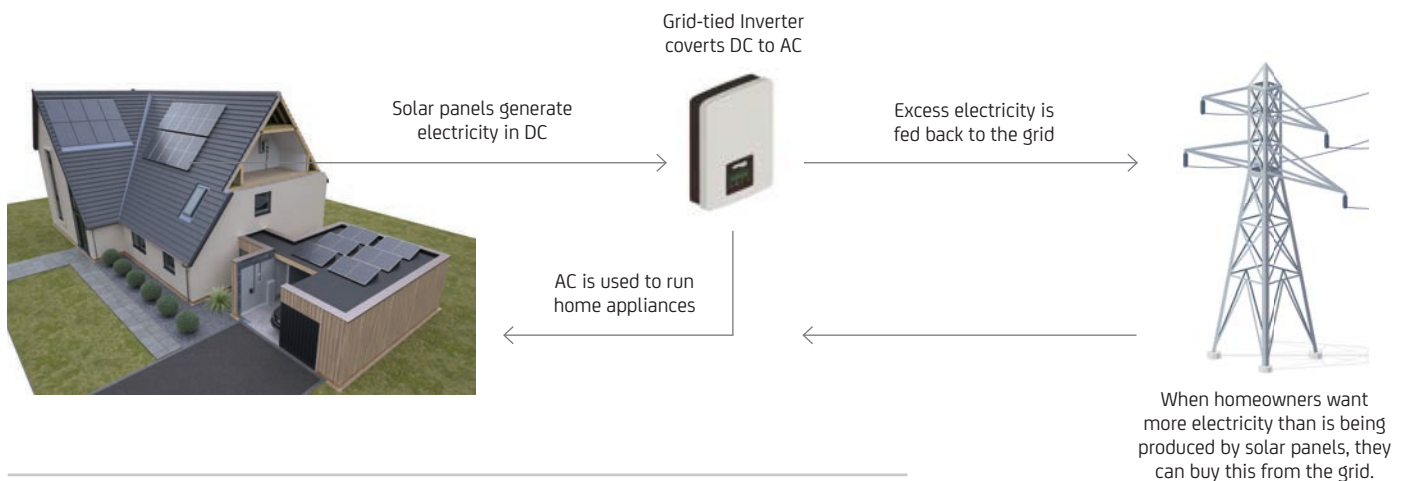
SOLAR SYSTEM OPTIONS EXPLAINED

Your customers can choose between two Solar Power Systems:

GRID-TIED SYSTEM

A grid-tied inverter converts Direct Current (DC) electricity generated from the solar panels to Alternating Current (AC) electricity, that can be used to power electrical appliances in the home.

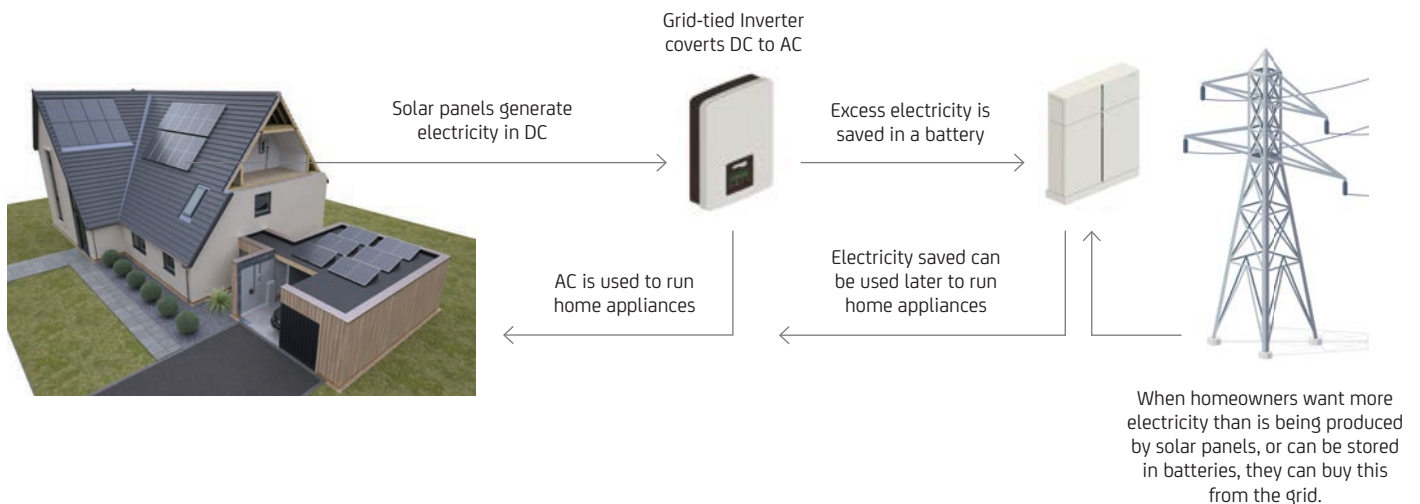
Unused electricity is fed into the electrical grid. An inverter is one of the most important pieces of equipment in a solar energy system.



HYBRID SYSTEM

This system includes a battery which can store the excess electricity generated from solar panels. This stored energy can be used to power the property at times when solar panels don't generate enough electricity.

It can also store electricity it's able to take directly from the grid, taking advantage of energy produced at cheaper rates provided by the property's electricity provider.



SOLAR SOLUTIONS FOR RESIDENTIAL HOMES

We have solar systems for all styles of residential property, suitable for pitched or flat roofs, new build or retro-fit, to ensure optimum performance for your customer.

IN-ROOF PITCHED

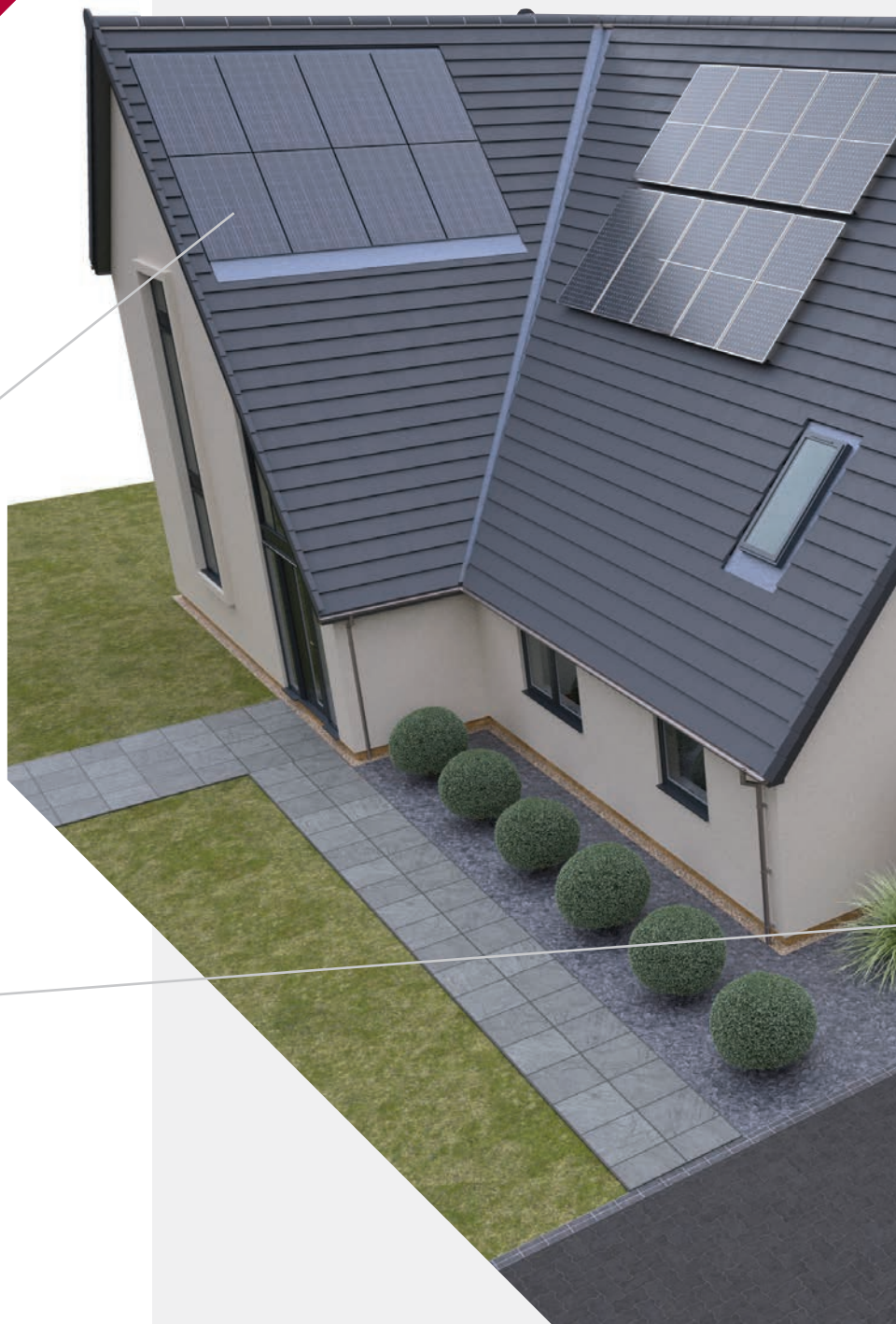
A full range of in-roof equipment for new build or retrofit schemes, in-roof solar is easy to install and applied directly to the roof battens.

- **PV Panels**
- **In Roof Trays**
- **Flashing Kits**

FLAT ROOFING

A versatile range of flat roof mounting systems to suit different applications.

- **PV Panels**
- **Direct Fix**
- **Ballasted System**
- **Wind Boards**
- **Penetrations**



Solar roof system warranties

Your solar installation is covered by the manufacturers' 15 year product guarantee for complete peace of mind.

All electric components should be fitted by a Qualified Electrical Contractor.

ON ROOF PITCHED

A full range of roof mounting equipment for new build and retrofit schemes which fit over an existing roof covering.

- PV Panels
- Roof Rail
- Roof Hooks

ELECTRICAL EQUIPMENT

- Inverters
- Isolators
- EV Chargers
- Batteries

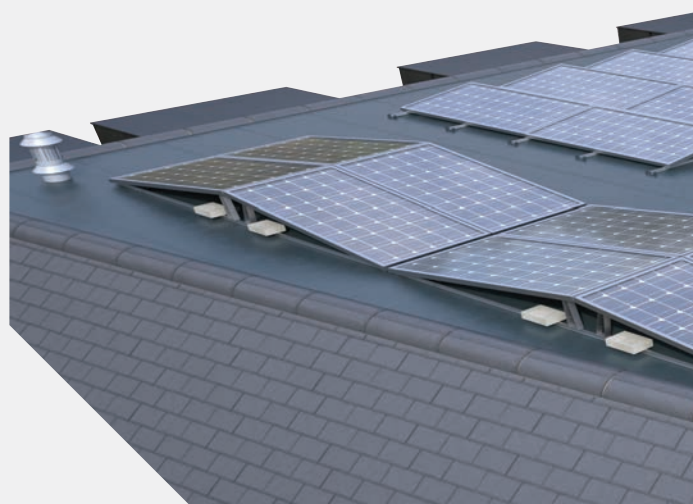
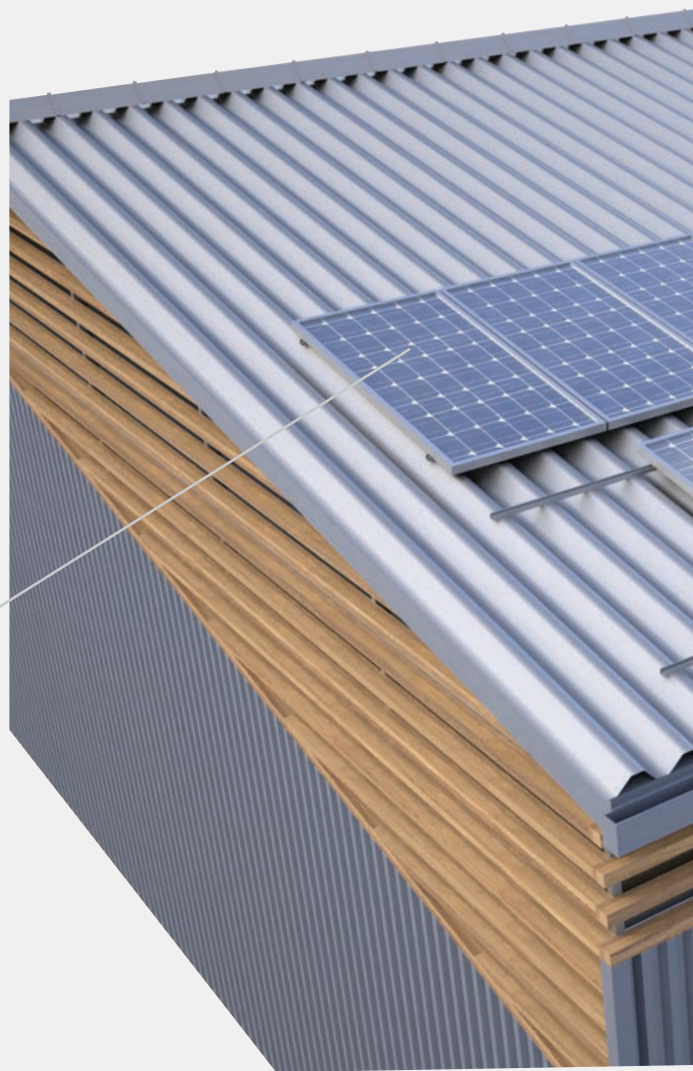


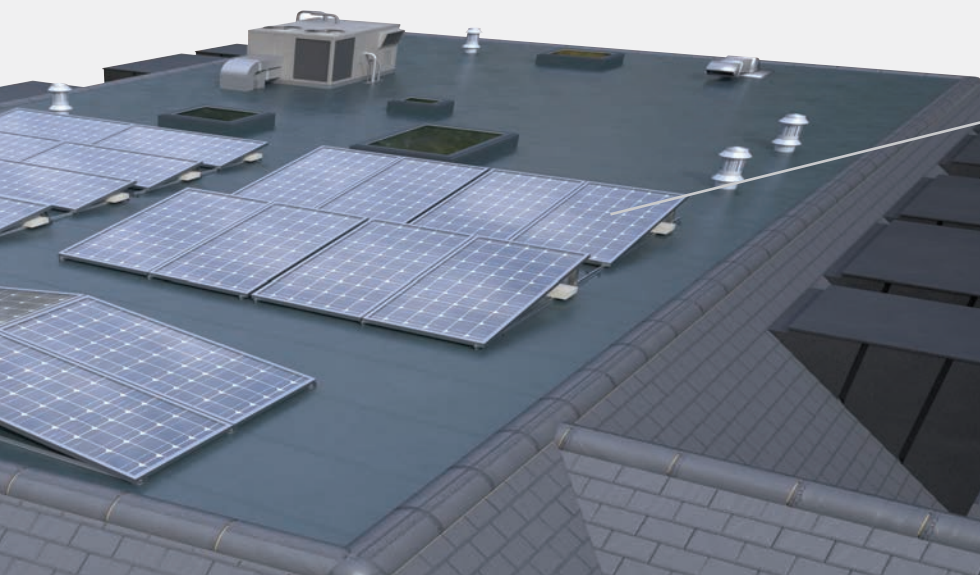
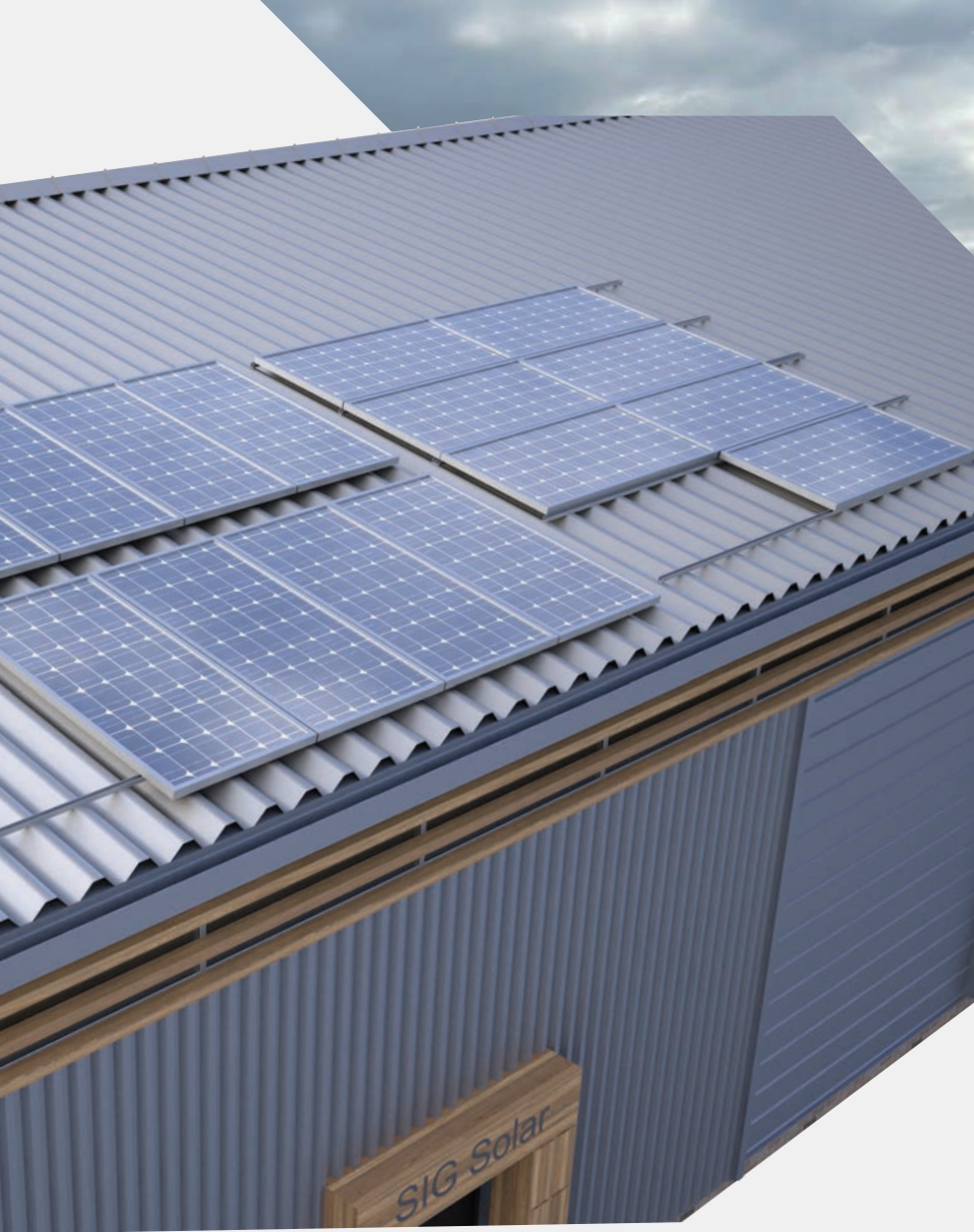
SOLAR SOLUTIONS FOR COMMERCIAL AND INDUSTRIAL SITES

SIG Roofing solar systems are suitable for all kinds of commercial and industrial applications, including hard metal roofs, to ensure optimum performance and minimal maintenance for your customer.

STANDING SEAM & HARD METAL INDUSTRIAL ROOFING

- PV Panels
- Rails
- Seam Clips
- Penetrations





COMMERCIAL ROOFING

- PV Panels
- Roof Mounts
- Rails
- Clips
- Penetrations

All electric components should be fitted by a Qualified Electrical Contractor.

LET SIG ROOFING MAKE SOLAR SIMPLE

Looking for a single comprehensive solar package?
Want to check you've chosen the best products to suit a specific solar system?
Together we make sure you:

- **Select most compatible products**
- **Choose a solar system with maximum efficiency**
- **Simplify the installation process**
- **Minimise technical complications**

TALK TO OUR DEDICATED SOLAR TEAM FOR ADVICE ON:

- **Roof specification plans**
- **Inverter sizing**
- **Panel arrangement, spacing, alignment**
- **Positioning and layout**
- **Electrical connection**
- **Safety measures and compliance**

All rights reserved. No part of this publication may be reproduced or transmitted in any form, or by any means, electronic or mechanical including photocopy, recording or any information storage and retrieval system, without permission in writing from SIG Trading Ltd. No information contained within this publication can be used to compile any other printed or electronic directory or mailing list. Whilst every effort has been made to ensure accuracy, the publisher does not, under any circumstances, accept responsibility for errors or omissions and no representation or warranty is made in relation to the suitability of a product for a specific application. Copying of the images contained in this publication, in any form without the author's permission, is an unlawful act under the Copyright Designs and Patent Act 1988. E&OE.

SIGRVC0224 V1 | © SIG Trading Ltd 2024. All rights reserved. The information contained in this document is believed to be correct at the date of publication. Images shown are for illustration purposes only.



*We're here to help you
make solar simple*

For more details on the range of solar solutions for your next job, speak to your local SIG Roofing branch, scan the QR code above or contact us at solar@sigroofing.co.uk or visit www.sigroofing.co.uk/solar

SIG ROOFING