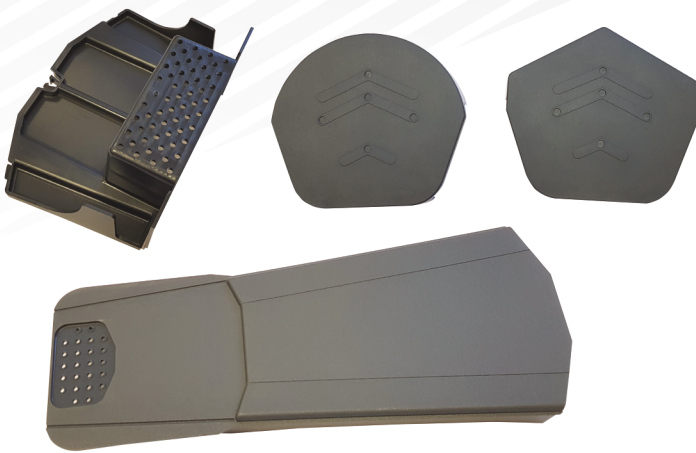


UNIVERSAL DRY VERGE SYSTEM



The FIX-R Universal Dry Verge is a mortar free system to mechanically fix the verge tiles according to BS5534. It is quick and easy to install.

- Universal unit, resulting in less stock holding
- Each unit has a water drip channel, preventing water staining
- Suits popular profile roof tiles with a batten gauge range of 260mm to 355mm
- Independently tested by BRE, conforming to BS8612
- The starter unit gives a positive fixing point for the system and can be installed either with or without the gutter in place
- Use 40 x 3.35mm screws for fixing into tile batten ends (not supplied)
- Suits roof pitches up to 55°

Description

The system offers integral solutions for a secure fixing to the roof. The starter unit at the eaves allows for fixing to barge and fascia board, depending on the roof construction available.

Dry Verge System Components

- Universal dry verge units
- Half round/segmental or universal angled ridge end caps
- Starter unit (incorporates closure)

Colours

- Black, Grey, Brown and Terracotta

Material

Universal Dry Verge Units

Material:	PP talc, UV resistant
Colour:	Black, Grey, Brown and Terracotta
Surface finish:	Matt

Half Round or Angled Ridge End Caps

Material:	PP talc, UV resistant
Colour:	Black, Grey, Brown and Terracotta
Surface finish:	Matt

Starter Units

Material:	PP talc
Colour:	Black, Grey, Brown and Terracotta
Surface finish:	Smooth

Weights and Packaging

Universal Dry Verge Units

Packaging:	Bags of 10, box of 40
Single unit weight:	0.185kg

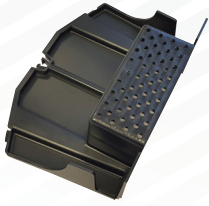
Half Round or Angled Ridge End Caps

Packaging:	Box of 20
Single unit weight:	0.14kg

Starter Units

Packaging:	Box of 25
Single unit weight:	0.0486kg

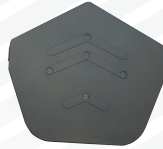
Fixing Instructions Products



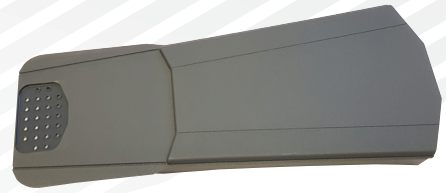
Starter Unit



Half round ridge end cap

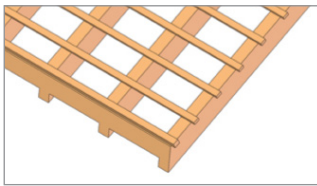


Segmental or universal
angled ridge end caps

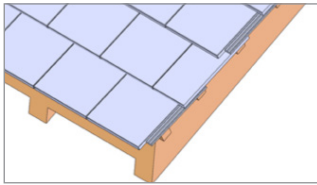


Universal dry verge units

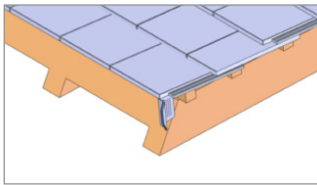
Installation Procedure



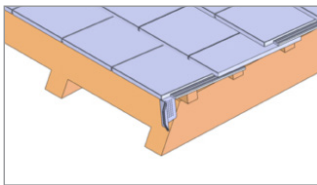
1. Install the tiling battens with a 40mm overhang over the brick or barge board. For refurbishment projects install a new tiling batten to the underside of the existing tiling batten.



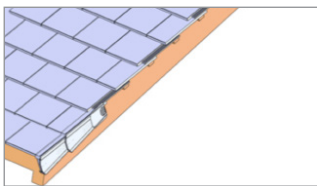
2. Set tiles flush with the battens. For refurbishment projects remove existing mortar bedding and install new tiling batten to the underside of the existing tiling batten.



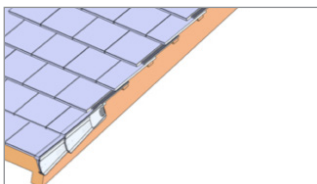
3. Starting at the bottom edge of the roof, insert the starter piece into the front end of the verge unit and mark out the starter position on the fascia and barge board. Remove the unit and mechanically fix the starter piece into position through the grid with a 40 x 3.35mm screw.



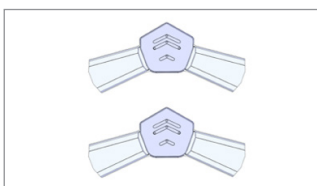
4. Slide the first verge unit over the tile at the eaves and into the starter kit fitting it under the head laps to ensure the unit is firmly held in place. Fix the unit through the top grid into the batten with a 40 x 3.35mm screw.



5. Slide the next verge unit into the upper edge of the first unit. Press firmly to the tile fitting it under the head laps to ensure the unit is firmly held in place. Screw the unit through the top grid into the batten.



6. Continue the process along the barge board to the ridge. If required, insert the blanking plate over the final nail grid to prevent water ingress. Now insert the ridge cap once the other verge is completed.



7. Continue this process along the barge board on both sides until reaching the ridge. Insert a ridge cap ensuring that the flexible flaps on the ridge cap contour around the outside of the verge unit. Screw fix the ridge cap to the ridge batten.

Date of issue: June 2020