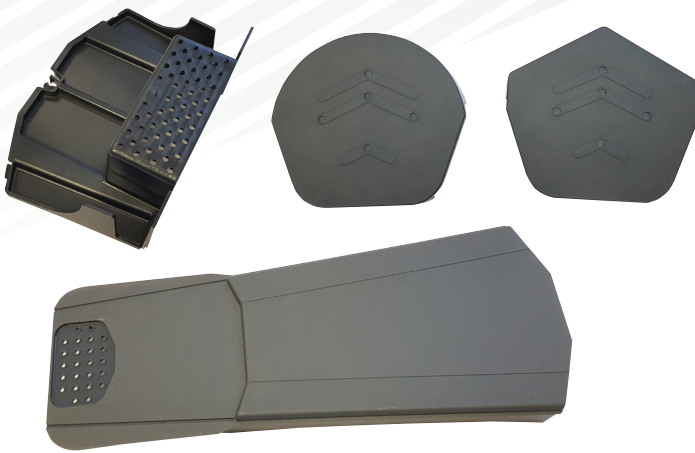


## AMBI DRY VERGE SYSTEM



The TIL-R Ambi Dry Verge is a mortar free system to mechanically fix the verge tiles according to BS5534. It is quick and easy to install.

- Universal ambi unit, resulting in less stock holding
- Each ambi unit has a water drip channel, preventing water staining
- Suits popular profile roof tiles with a batten gauge range of 255mm to 355mm
- Suits the thin leading edge tile (additional cutting is required on ambi unit tabs)
- The starter unit gives a positive fixing point for the system and can be installed either with or without the gutter in place
- Use 40 x 3.35mm screws for fixing into tile battens
- Suits roof pitches up to 55°

### Description

The system offers integral solutions for a secure fixing to the roof. The starter unit at the eaves offers two different installation strategies, depending on the roof construction available:

- Fixing to the barge board
- Fixing to the fascia board

## Dry Verge System Components

- Ambi verge units
- Half round/segmental or universal angled ridge end caps
- Starter unit (incorporates closure)

## Colours

- Black, Grey, Brown and Terracotta

## Material

### Ambi Verge Units

|                 |                                   |
|-----------------|-----------------------------------|
| Material:       | PP talc, UV resistant             |
| Colour:         | Black, Grey, Brown and Terracotta |
| Surface finish: | Matt                              |

### Half Round or Angled Ridge End Caps

|                 |                                   |
|-----------------|-----------------------------------|
| Material:       | PP talc, UV resistant             |
| Colour:         | Black, Grey, Brown and Terracotta |
| Surface finish: | Matt                              |

### Starter Units

|                 |                                   |
|-----------------|-----------------------------------|
| Material:       | PP talc                           |
| Colour:         | Black, Grey, Brown and Terracotta |
| Surface finish: | Smooth                            |

## Weights and Packaging

### Ambi Verge Units

|                     |                       |
|---------------------|-----------------------|
| Packaging:          | Bags of 10, box of 40 |
| Single unit weight: | 0.185kg               |

### Half Round or Angled Ridge End Caps

|                     |           |
|---------------------|-----------|
| Packaging:          | Box of 20 |
| Single unit weight: | 0.14kg    |

### Starter Units

|                     |           |
|---------------------|-----------|
| Packaging:          | Box of 25 |
| Single unit weight: | 0.0486kg  |