

INSIGHT

Serving the **roofing** and **property improvement** industry

issue 18



Roofing Racers – Page 26

Counterfeit Slate – Page 18

*Competent Roofer and
ECO Accreditation – Page 28*

Journey of Roofing Batten – Page 32

Flat Roof Warranties – Page 16

Contents

INDUSTRY NEWS

Playing with a marked deck	4
The devil lies in the detail	16
Paul Strank, we salute you!	20
The Apprentice	21
Top marks for Trustmark	22
More tea, Vicar?	25
Tri, tri again	26
Competent Roofer	28
CISRS	29

ROOFING PRODUCTS

Flash! And they're gone	6
Bumper to Bumper	8
Don't slate it 'til you've tried this	10
One-track mind	11
The power of three	12
Smooth operator	13
Eternally innovating	14
Buyers beware	18
Industrial Roofing - Take the easy road	23
New Klobber product launches	24
Gordon's alive	30
The Batten of Britain	32

ROOFLINE & RAINWATER

It's a steel	7
Are you sitting comfortably?	9
Pure Genius	17
Top Brass	31

COMPETITION

Tried & Tested	35
Contributors directory	34
Insight Approved Stockists	36

Form is temporary.

2013 is proving to be a year



We've blistering summers days. A British man has won Wimbledon. The Lions won a tour for the first time since 1997. And we've not done badly in the Ashes. What's going on?

If anything, the above examples demonstrate that performance can change. However, if there's one area where you want it to be consistent it's an industry like roofing.

So, with that in mind we kick off this issue with a look at CE Marking and how it's going to affect those working in the industry – from manufacturers and suppliers to national contractors through to smaller contractors. See pages 4 and 5 for more details.

There's also a heads-up on the new mandatory training for scaffolders being introduced by the CISRS, see page 29 to find out more.

With our green and pleasant land turning a bit brown and crisp this summer, we're even more aware of environmentally friendly

products – and there are some great ones coming on the market. The Envirotile is a truly green roofing system made from 79% recycled polypropylene, the majority of which comes from car bumpers. See page 8.

IKO have developed the IKOslate, an engineered 'slate' roof tile that has the beauty of the real thing but none of the agro. It's made from mineral reinforced, 99% recycled material so is another sustainable hero. See page 10.

How low can you go?

If you're called Thrutone then the answer is pretty low. This is a new type of fibre cement slate from Marley Eternit that can be used on pitches as low as 15° for even more design versatility. See page 15.

But if we talking low-down behaviour, then it's the thieves who steal lead, in particular from historic buildings, that are about as low as you can go. Fortunately help is at hand

For editorial enquiries please contact the editor at editor@insightmag.co.uk Any views and opinions expressed are solely those of the author and do not necessarily reflect those of Insight Magazine. All rights reserved. No copying by any means is permitted, except when permission is given in writing by Insight Magazine. The publication contains manufacturer's product information that is reproduced by Insight in good faith, based on the latest knowledge available. While every effort has been made to ensure that the information is current and correct, Insight cannot accept responsibility for the application and performance levels of the products featured. Neither can we accept responsibility where the manufacturer's instructions have not been followed. © Insight Magazine 2013.

Class is permanent.

of standards. High and low.

with the introduction of non-lead flashing from Ubbink. Quick to install Ubiflex has no scrap metal value and therefore no value to thieves. See page 6 for more details.

In a similar vein we also look at some of the remarkable flat roofing warranties that have been seducing roofers up and down the country. Discover how they may not be all they seem on page 16.

And there's lots more besides – from three new products from Klover, Lindab's real steel deal and how push-fit soil pipes can save you labour.

So far 2013's been full of surprises. What isn't surprising is how much great work is being done by roofers all over the country. So, while we're toasting ourselves in the sunshine and toasting the birth of the new royal prince – let's not forget to toast the great British roofer. Here's to plenty more successes in 2013.

Just one more thing...

Flick to the back for a handy index on all our contributors with a reader response card to make getting in touch even easier.

In this issue:

- CE marking and what it means for you
- Beware of far-fetched warranties warns SIG Roofing
- Specify Ubiflex non-lead flashing and beat the thieves
- Lindab's Rainline. More profit, less hassle and happier customers
- IKOslate proves a composite roof tile can be as good as the real thing
- Marley Eternit launch three new products
- SIG Roofing slams counterfeit slate
- NFRC member awarded MBE for services to charity
- Scottish apprenticeship week shows off traditional roofing skills
- The Roofing Racers are fit for purpose
- Green Deal and ECO accreditation for industry scheme
- CISRS - A training framework for scaffolders

insightmag.co.uk



All this and more!

Get a deeper insight into all things to do with the roof at insightmag.co.uk our online home.

There's loads of stuff to see and read – and it's a great place to track down those fascinating roofing tit-bits (don't put that into a Google search though!).

Content highlights;

- Latest industry news
- Product news and reviews
- Competitions

Playing with a marked deck

CE marking and what it means for you

For most people playing with a marked deck means cheating at cards. For roofers it means something rather different.

On July 1st 2013 CE marking became compulsory for product manufacturers as part of the new European Construction Products Regulation (CPR).

The CPR applies to any product on the European market intended for permanent inclusion in a building project. And it applies to everything where there is a harmonised European Standard (hEN).

So, it's not just the deck that's marked, it's the whole house!

From the smallest job up to the biggest feats of engineering, all permanent components, structural or not, must be CE marked. What does that mean for us? Well, as roofing contractors it means we need to use products that are CE marked correctly.

Products that came out before 1st July 2013 don't count, but anything launched after that must be fully compliant. Or else.

A mark of quality

The CPR and CE Marking are all about making sure products are fit for purpose, do what they're supposed to do and aren't going to fail. Basically eliminating all rogue and sub-standard products. So, depending on the product, certain levels of information need to be available. It's also about creating one market within the EU, harmonising standards, removing barriers and establishing common methods of assessment for product performance across the continent.

Responsibility for making it happen goes right through the supply chain. That means contractors, merchants and manufacturers all have to do their bit. For companies like Redland and Steadmans, CPR means that legally they have to provide a CE mark on their products wherever there is a harmonised European Product Standard or Technical Approval.

Mark my words

The introduction of CPR also means merchants need to ensure paper work such as



delivery notes, invoices and labelling all have the right information. Products need to carry the relevant harmonised standard or technical approval code and the performance criteria for that product.

Don't, though, confuse CE marking with quality marks such as BSI Kitemark where products are tested regularly to make sure they are good enough. CE marking shows materials conform to a European product standard or technical approval of a design. Unlike the continual tests involved in things like BS Kitemark, initial type testing is often all that's needed to CE mark a product – Redland's clay and concrete roof tiles and fittings are good examples.

Manufacturers also need to show the tested values of the product on labelling and documentation. And, the label must include key information about the product such as: specification, year when CE mark was first applied and the manufacturer's name.

Learning CPR

It might not save your life but knowing about CPR could save you from a major headache.

According to the Construction Products Association (CPA), the CPR recognises that manufacturers may want to use websites as a way of providing information on their products. For the time being the precise details of what is and what isn't allowed won't be set in stone until late 2013, early 2014.

With the whole system policed by Customs and Excise, there are penalties for not toeing the line – though at present these are unclear. Worst case scenario? Failing to comply with the CPR could mean the restriction or removal of a product from the market, a fine or even a prison sentence for persistent offenders.

For those trading in eligible products, which carry no CE mark or have incorrect paperwork, their cards are definitely marked.

Redland are making their mark

From the 1st July all Redland's eligible products supplied to merchants such as slates, tiles, roof fittings like ridge and hip tiles, have been clearly CE marked.

If you ask a merchant about CE marking, then they need to be able to supply a 'Declaration of Performance' (DoP) certificate – easily available from suppliers. As Redland is signed up to the CPA/Cambridge Trading Standards Primary Authority Agreement they can publish their DoPs on their website without worrying about legal challenges. To help reduce the risk of UK enforcement bodies challenging non-paper systems, particularly seeing as there's no clear regulatory information, the CPA has negotiated a Primary Authority agreement with Cambridgeshire Trading Standards. Redland's commitment to quality puts them at the forefront of this new legislation.

For more information on Redland's roof fittings, please complete the reader response card.

ENQUIRY
1

Ready, Steadmans, Go!

Steadmans, part of SIG Group, has achieved the CE Marking accreditation for its single skin cladding profile range, featuring six differing profiles to suit every application, plus its AS 35 composite panels.

Alan Scupham, Technical Manager at Steadmans, notes that their single skin and composite systems "offer rapid coverage and swift completion of weatherproof building envelopes, producing high-performance construction solutions". He adds: "We've now undertaken a rigorous process to ensure they fully comply with CE marking requirements too and are supplying certification of this with invoices, where customers want it." Achieving the CE marking standard was a significant challenge and is a positive step for the industry as a whole.

For more information on Steadmans single skin roof and wall systems, please complete the reader response card.

ENQUIRY
2

Made in EU

If you've any questions about what this means to your business, help is at hand. SIG Roofing & Roofline have been working with, and advising, industry bodies and suppliers since 2011 in order to gather the essential data.

For more information please fill in the reader response card.

ENQUIRY
3

Flash!

And they're gone.

Specify Ubiflex non-lead flashing and beat the thieves



Metal theft is the fastest growing crime in the UK. Driven by demand from emerging markets such as China it has become big business for criminals. And, in the harsh economic climate, with spiralling metal prices, lead and copper are particularly attractive to thieves.

It's not a new problem. Lead theft dates back at least as far as the Romans and probably far beyond that. And it's also not confined to the UK - an entire bridge was stolen in the Ukraine for its scrap metal value. For thieves it seems nothing is sacred... especially not churches.

St Bartholomew's church near Ashbourne is one of hundreds around the country that have fallen victim to lead theft. Their response? They asked Ubbink to help solve a problem that showed no signs of going away.

Ubbink stepped up to the plate with Ubiflex, a non-lead flashing material with no scrap value, and therefore no interest to thieves.



Ubiflex is approved

As St Bartholomew's is a listed building English heritage had to approve Ubiflex as it wasn't a like for like replacement. With the help of Ubbink the Reverend gained approval on the grounds of no further risk of lead theft to the building and, most importantly, keeping the aesthetics of the building.

Installing Ubiflex saves time and money

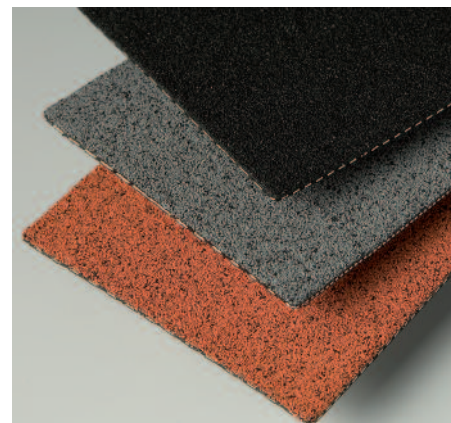
- **Quick to install.**
- **It reduces on-site time and associated costs.**
- **It's very easy to work – in the same way as lead flashings.**
- **There's no need for protective measures.**
- **It can be cut to size using a Stanley knife.**

And, it isn't susceptible to thermal movement. This means you can form aprons up to 12m long without seams or expansion joints.

Ubiflex reduces Health & Safety risks

The extreme heavy weight of lead also presents a risk to workers carrying and installing the material at height.

- **Ubiflex is non-toxic.**
- **It's 80% lighter than lead.**
- **It brings health and safety advantages and reduces structural loads.**



Ubiflex is sustainable

Ubiflex is environmentally friendly, and can be recycled at the end of its working life.

Ubiflex* is BBA certified and BRE tested

Wind tunnel testing at the BRE has demonstrated that correctly installed Ubiflex* flashings will resist wind speeds of up to 110mph without failing.

- **BBA Certification.**
- **NHBC and Zurich Insurance approved.**
- **It can be specified with confidence for all kinds of building projects.**
- **Has a working life expectancy in excess of thirty years.**
- **And it's supported by a twenty-five-year guarantee.**

It may have no value to thieves, but it's of great value to those trying to stop them.

*3.5mm thick Ubiflex B3 grade

ENQUIRY
4

For further information on Ubiflex please fill in the reader response card.

It's a steel

Lindab's Rainline. More profit, less hassle and happier customers.



It's the real deal... in steel.

When you think of Sweden a few things normally spring to mind: Ikea, blondes, Absolut vodka, ABBA and of course high taxes. But Swedish companies are also at the forefront of producing technologically advanced, innovative and eco-friendly products. Lindab is one such example, offering real and sustainable alternatives to less environmentally friendly products such as plastic - without compromising performance.

Lindab's steel rainwater system Rainline is the real deal because it gives you a high performance steel-based rainwater system for an extremely competitive price.

And you'll know you've got the right system for your project. Their sophisticated rainwater calculation software ensures the correct size gutter is specified and the downpipes have the capacity to drain off estimated rain flow.

Lindab use the latest advances in steel manufacturing with

recent research suggesting steel is a more sustainable carbon option.

As a result Lindab are also seeing increased sales for Rainline from councils and housing associations, many of which have strict sustainability criteria.

Ticking all the right boxes

Successful specialist environmental architectural practices like Liverpool based Denovo Design have also recently specified Rainline for several of their award-winning

social housing schemes. It was Rainline's low-maintenance, resistance to vandalism and impressive sustainable credentials that attracted them and their clients.

Rainline. Click & fit – it's that easy

- **UV stable.**
- **Steel fixing brackets.**
- **Click together simply for a perfect watertight joint.**
- **Reduces time on site.**
- **Reduces labour costs.**
- **Increases profit.**
- **Lasts for at least the lifetime of the building.**
- **Polyester coating won't fade, peel or blister and is guaranteed for 15 years.**
- **Higher load-bearing capability, useful for high snow build-up.**

Rainline with all its product benefits, price, performance, sustainable credentials, and meaningful guarantees is the real deal... in steel.



ENQUIRY
5

For more information on Lindab's Rainline please fill in the reader response card.

The award winning Envirotile is driving sustainable roofing



Until quite recently finding a sustainable, high performance roofing solution was pretty tricky. Thankfully, that all changed with the introduction of the Envirotile, a new lightweight innovative, interlocking roof tile made from recycled polymers.

The tile is the brainchild of Trevor Wakefield, a seasoned roofer, who had the idea for the product after watching a TV programme on the problem of plastic pollution. Trevor went on to found the Green Roof Tile Company. He has since joined forces with Russell Roof Tiles, the leading independent tile manufacturer in the UK, who have sole exclusivity and distribution of the Envirotile.

My other roof is a Mercedes

The Envirotile is a true eco-friendly sustainable roofing system suitable for use on all types of buildings. It is made from 79% recycled polypropylene of which the majority comes from

car bumpers and other plastics normally destined for landfill.

Other materials such as UV stabilisers and additives make up the remainder of the product to enhance the overall performance of the tile.

Crucially it is 100% recyclable at the end of its life, making it one of the most sustainable roofing products on the market.

- **Achieves minimum pitch as low as 12.5°.**
- **Conforms to BS476-3 (A Rating).**
- **Can be used where most concrete and clay alternatives cannot.**
- **Lighter and faster to install.**
- **Can be cut with a handsaw eliminating HSE issues relating to wet cutting as there is no dust or pollutants.**
- **Ease of cutting reduces waste as no need for tiles-and-a-half or half-tiles.**
- **Suitable for all types of buildings.**
- **Extremely robust.**

It's for all these reasons that 40 thousand tiles are being used on

a school in the North West, which is prone to vandalism and damaged broken tiles.



Untearable underlay

Envirolay was launched alongside the Envirotile as a high performance underlay, which also has energy saving benefits. The flame retardant woven glass fibre cloth and aluminium foil weave is vapour permeable and has a high nail tear resistance. It makes it untearable in normal use. The thermal reflectivity of the material reduces the convection and radiant heat loss through the roof. In summer it reduces heat entering in the building, but also helps to maintain the heat in the building in the winter.

Award winning

Together the Russell Envirotile and Envirolay offer a package of

unrivalled technical performance and excellent eco-credentials.

The tile was chosen from 100s of UK companies to exhibit at the Make It in Great Britain exhibition at the British Science Museum during the 2012 Olympics. This has led to many other acknowledgements such as the MEBC Innovation Award, Lord Stafford Award for innovation for environmental sustainability and recently the Green Apple Environment Award 2013.

The Envirotile is a wonderful example of where precision crafted design meets the latest in recycled materials technology. Not only does it ensure every tile meets the highest standards, but it also makes life a lot easier for you!



For more information on Envirolay and the Envirotile please fill in the reader response card.

Are you sitting comfortably?

Hargreaves new push-fit soil pipe system means less work for better results



Hargreaves
RAINWATER • SOIL • DRAINAGE



Lightning quick, easy peasy

When you're writing about soil pipes you might be forgiven a little toilet humour – but we all know getting these systems right is a serious business. That's why Hargreaves have introduced their new, simple-to-install Traditional Express cast iron push-fit soil pipe system.

It looks just like a traditional LCC soil system and is particularly suitable for listed buildings, heritage and conservation projects. In a smart black gloss finish, it's supplied ready to install on site. Easy to fit, it saves time and uses minimal tools – just some lubricant and the simple gasket relaxer.

Casting around

The Hargreaves system meets BS EN 12056 codes of practice for

gravity drainage systems and BS416 part 2 for soil, waste and ventilating pipes and fittings. Plus, as all pipes and fittings are manufactured in grey cast iron it has the added benefit of fire resistance.

Cast iron is particularly well suited for all drainage systems both above and below ground. Strong and durable, it will withstand vandalism and site handling. It also increases the sustainability of your project, as it's 100% recyclable. Using such a robust material means the



Two new superheroes

push-fit pipes can be expected to last the lifetime of the building with minimal maintenance.

- **Pipes available in 3m or 1.8m lengths manufactured to 100mm diameter.**
- **Push-fit sockets are available with or without fixing ears fitted with 2 EPDM rubber-sealing gaskets, which meet BS EN 681-1.**
- **Eared slip sockets are also available – making cutting into an existing system much easier.**

Six of the best

Nigel Stokes, Commercial Manager at Hargreaves Drainage, explains: "There are just six simple steps needed to fit the Traditional Express soil system." Installed from bottom to top, the first pipe or fitting connects to the underground drainage system to provide a secure base. All the assembled joints are designed to be a tight fit to comply with a pressure test and to provide long-life performance.



Installation step 1



Installation step 2



Installation step 3



This superhero won't freeze



Continuous sidekick

ENQUIRY
7

For more information on Hargreaves push fit system please complete the reader response card.



IKO
Setting the standard in
roofing and waterproofing

Don't slate it 'til you've tried this

IKOslate proves a composite roof tile can be as good as the real thing

Hey, good looking

IKO have developed IKOslate, an engineered roof tile with the beauty of its natural cousin, but none of the drawbacks.

The inherent properties of IKOslate also make it the ideal choice when selecting sustainable building products. In fact, just 1m² of IKOslate contains more recycled content than the average family discards in a month.

As a composite roof tile it's manufactured from mineral reinforced, 99% recycled and re-engineered materials. Its unique structure gives it superior strength and makes it easier to handle and install. It even looks as good as slate because they've used moulds of quarried slates to form the composite tiles. Clever. Each mould gives different textures and patterns to the tile – all topped off with a realistic "slate grey" finish.

It all means that even relatively inexperienced roofers can deliver a sustainable roof with the look and feel of slate, faster and more economically than previously possible.

Tough Stuff

Fire, wind, rain, pollution, even microbial growth, IKOslate has been extensively tested and independently proven to be capable of dealing with them all:

- **Fire rated to EXT.S.AA in accordance with BS476 Part 3: 2004.**
- **Certified to withstand wind and wind driven rain in excess of 110mph.**
- **Resistant to fungicidal and microbial growth as well as airborne chemicals and pollutants.**
- **Passed 4,000 hours accelerated arc zenon test for colourfastness and UV resistance.**



It's even tough enough to withstand transport, storage and installation. So, no need to over-order to cover breakages.

Each pack contains enough tiles to cover approximately 1.5m² with a 180mm batten gauge. And their nifty little IKO Ready Reckoner makes ordering the precise number of packs you need even easier.

Easy to handle

With strong sustainability credentials and added benefits that make them easy to transport and layout, we think they are certainly worth a look.

- **80% lighter than a traditional slate of the same size.**
- **Supplied in carry-packs for efficient manual handling.**
- **Completely safe to cut and use on site.**
- **No harmful dust and no need for either water suppression or respiratory protection.**
- **Spacing nibs plus clear nail hole and exposure lap markers.**
- **Power tool friendly – fix tiles with a hammer or nail gun and cut with a hacksaw or jigsaw.**
- **100% recyclable offcuts.**

ENQUIRY
8

For further information please complete the reader response card.

One-track mind

Single-layer systems offer more and more benefits, especially for flat roofs.

Are you a traditional built-up roofing system kind of guy or more single minded in your approach? Both have their merits and it's true that built-up solutions have been around for ages. Then again so have the Archers but that doesn't make you want to listen to it.

Modern single-layer alternatives are now coming into their own as more and more roofers realise what they can do, especially for flat roofs. So, if you haven't already, it could be time to join the singles club and see what they have to offer.

Ok, so what's the difference between single and multi-layer systems?

In a typical multi-layer system a series of tapered insulation components are laid over flat 'packer' boards that are bonded to the roof substrate. This bonding process occurs on site and the completed roof is built up layer by layer.

In a single-layer system a series of individual roofing components are carefully bonded together off site under controlled factory conditions. They are then delivered to site – ready to be bonded directly on to the roof deck as single units.

Conventional multi-layer solutions built up on site can certainly do the job. But there are downsides. For a start you can end up needing to bond a total surface area many times larger than the footprint of the roof itself. And you'll have to do that on site in whatever weather the UK decides to throw at you, with the extra work, extra time and extra costs this involves. Plus, it's easy to make a mistake, as you have to work around any penetrations to the roof.



You can easily accommodate any penetrations or obstacles on the roof at the design stage.

Make mine a single

Fortunately a single-layer system eliminates many of these difficulties and still provides a roofing solution every bit as effective. A typical single-layer system is designed as a series of separate panels with insulation layers bonded together off site. This dramatically reduces the amount of work that has to be done on site. It also means you can sort any services or obstacles on the roof easily at the design stage.

Providers of single-layer systems such as Gradient Flat Roofing (part of the Recticel Group) manufacture the panels under factory conditions, so you've got much more reliable adhesive bonding. Errors are reduced and each board is individually marked and referenced to drawings that show its position on the roof. Once on-site, the work involved in installing the boards, and the time required to do it, are dramatically reduced, freeing you up to move on to the next job.

Single-layer solutions:

- **Perfectly tailored to each individual project.**
- **Easily handle rainwater run-off.**
- **Easily tapered to create any fall, no matter how complex.**
- **Straightforward compliance with Building Regulations.**
- **Lower roof maintenance costs.**
- **Longer working life.**



Single-layer insulation systems are also suitable for green roofs.

Single-layer systems are also incredibly versatile, whether it's a new roof or a refurbishment project. You can use them with a wide range of membrane types for warm, cold or inverted roofs and incorporate a variety of material depending on what you need.

ENQUIRY
9

For more information on single-layer roof system please fill in the reader response card.

The power of three

Three new products from Redland to make your life easier

Three is a magic number. There's a reason why there are Three Degrees, Three Stooges and Three Musketeers. The Good the Bad and the Ugly. Three Men in a Boat. It just works. The rule of three suggests that things that come in threes are funnier, more satisfying and more effective than other numbers of things. Goldilocks and the Two Bears? Doesn't work.

Whether Redland had this in mind when they launched three new products on the market isn't clear. What is clear is that they all work brilliantly. They're highly effective and we think you'll find them very satisfying.

Modular outlet adaptors

First up is a set of adaptors that are perfect for maintaining the weather-tightness of a property, particularly when so many products are being installed on roofs.

Ensuring a roof's resilience against wet weather without spoiling its aesthetics is a major consideration in today's market. That's why the adaptors have been carefully

matched with Redland's interlocking concrete tiles to avoid disrupting the appearance of the roof after installation.

The new range includes:

- **A cable adaptor that can secure up to eight cables.**
- **A solar adaptor for larger cables and solar thermal piping.**
- **An antenna adaptor for attaching TV aerials and satellite dishes.**
- **A soil adaptor to provide high-flow ventilation to bathroom soil pipes.**

Rapid Flashing Strip

Designed to aid the fixing of Rapid Flashing onto roofs these seal and fix the top edge of rapid flashing against the wall or chimney, saving you time and money.

Gone are the days when you'll have to angle grind a channel into newly rendered walls. Nor will you have to hack off mortar from

existing brickwork to chase flashing into a side abutment or chimney.

This is quicker, simpler and not only saves you hassle and cash but means you need less flashing material in the first place. And you get a cleaner finish into the bargain.

The specially designed Rapid Flashing Strip is perfect for use with Redland's Rapid Flashing and Rapid Flashing Sealant.

Uni-Vent Rapid Ridge/Hip Pack

And, last but not least, Redland has replaced its Uni-Vent Rapid Ridge.

The Uni-Vent Rapid Ridge/Hip pack is a universal product, which can be used on both ridges and hips. It's a quick and simple alternative to carrying multiple packs to cover all different tile types.

The contents of the pack are the same as the Uni-Vent Rapid Ridge, but with an update to the installation instructions. Uni-Vent Rapid Ridge/Hip is now a single ten-meter pack for all your dry-fix ridge and hip installations.

- **Flexible seal ensures there is no need for pre-drilled ridge or hip tiles.**
- **Guarantees a weather-tight solution.**
- **Complies fully with the latest British Standards.**
- **Works in conjunction with the Redland hip support tray.**
- **Gives a perfect hip line.**
- **Redland Kro Clip mechanically fixes small cut pieces.**



Redland

ENQUIRY
10

For more information on Redland's new products please fill in the reader response card.


Sandtoft

Smooth operator

**Sandtoft's new Okewood plain tile.
Minimum waste. Maximum joy.**



Since launching its new range of clay plain tiles earlier this year the phone hasn't stopped ringing at Sandtoft. And one tile that is proving extremely popular is the Okewood.

The Okewood is a traditional clay plain tile with a cross camber, smooth finish that looks like a sanded tile. Bespoke machinery creates the finish with clay engobe (that's basically liquid clay) used to represent sand. This gives a textured appearance without the added cost. This Okewood tile has a subtle, muted, natural colour and works well on traditional style

homes, but is just as popular for modern buildings.

The new range of clay tiles comes hot on the heels of the launch of the Barrow and Alban clay plain tile ranges in 2011. Sandtoft manufactures the tiles at Broomfleet, where they have extensive clay reserves formed from the alluvial plain of the river Humber over 10,000 years ago. This abundant natural resource is right next to the plant, and has been used for generations to create beautiful and highly durable tiles.

Smoothly does it

The whole clay plain tiles range has gone down a storm with customers across the country. We can see why so many people believe the Okewood is sanded – which makes the smooth finish even more impressive.

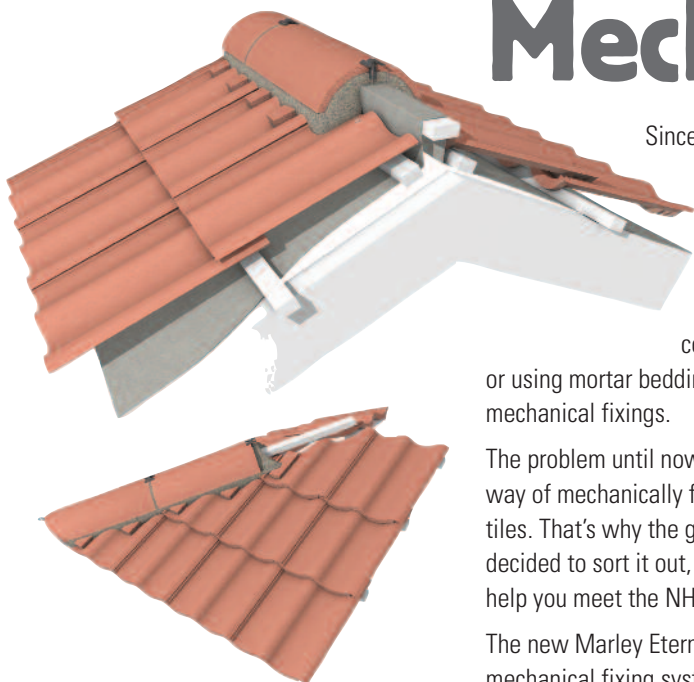
ENQUIRY
11

For more information about Sandtoft's new plain tile range please fill in the reader response card.

Eternally innovating

Marley Eternit launch three new products

Mechanically fixed



Since the beginning of 2012, all homes guaranteed by the NHBC need to have mechanically fixed ridges and hips – either through a complete dry fix system

or using mortar bedding with additional mechanical fixings.

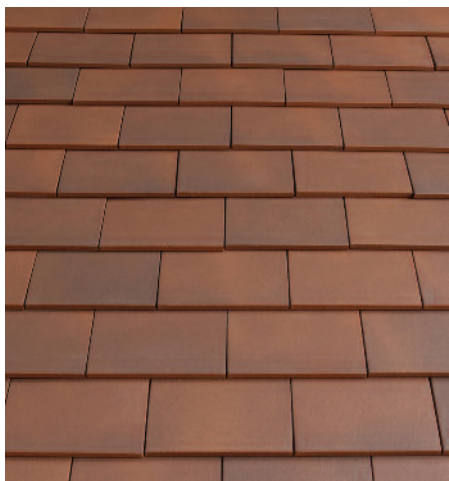
The problem until now has been no common way of mechanically fixing mortar bedded tiles. That's why the guys at Marley Eternit decided to sort it out, clear up confusion and help you meet the NHBC standards.

The new Marley Eternit fixing kit is a mechanical fixing system for mortar bedded

ridge and hip components that meets the NHBC standards. It also provides a durable and secure alternative to mortar bedding alone:

- **Includes purpose-made clips for securing small cut tiles.**
- **Consistent and fully tested system for mechanically fixing mortar bedded ridges and hips.**
- **Durable and secure alternative to mortar bedding alone.**
- **Needs high-level ventilation to meet BS5250 and NHBC technical standards.**

Always take the weather, take the weather with you



Looking 'weathered' isn't generally something to sing about but a new clay tile is proving how popular that particular look can be.

Marley Eternit's new Acme Mixed Brindle single camber clay plain tile was developed to meet the growing demand for a weathered appearance in both the new and refurbishment markets.

The new tile has a red brown base with a true brindle colour and can be used at pitches as low as 30°.

- **Each individual tile is a different colour.**

- **Tiles can be blended to make a beautiful, authentic but cost effective clay roof.**
- **Impressive environmental credentials, with maximum points towards the BES 6001 Responsible Sourcing standard.**
- **A+ rating in the BRE Green Guide to Specification.**

So, whatever the weather, you can rely on an authentic weathered look with a range of options that will really appeal to your customers.

Mechanically fixing mortar bedded tiles? **Check.**
 Weathered mixed brindle single camber clay plain tile? **Check.**
 Low-pitch fibre cement sheeting? **Check.**
 It's the latest innovations to hit the market from Marley.

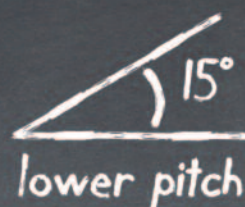
Low Fibre

Thrutone

- Market leading, light-weight fibre cement slate.
- Blue-black colour, smooth surface and square cut edges give superb aesthetics.
- Industry leading sustainability credentials
- Low carbon footprint of just 13 CO₂e /m² (based on 600 x 300 slate at 100mm lap)
- Lowest environmental rating (A+) in the BRE Green Guide
- Fully recycled at the end of its use

People normally talk about getting your fibre levels up but Marley Eternit are working hard to get it low. Way down low.

They've announced their latest low pitch roofing innovation – Thrutone fibre cement sheeting that can be used on pitches as low as 15°, with reduced rafter length.



This latest innovation from Marley gives specifiers and contractors even more design versatility with fibre cement slates. It follows increasing demand for a more cost effective traditional slate aesthetic at lower pitches and comes hot on the heels of the successful launch of Marley Eternit's low pitch Birkdale fibre cement slate.

Harder than nails

Marley's testing regime makes the SAS look like a bunch of sissies. Intensive analysis at their research and development centre shows that with a reduced rafter length of 4m, Thrutone can be used at a lower pitch of 15°. And did they put Thrutone through its paces? Just about the only thing they didn't do was make it go on a 25-mile hike with a 100kg pack.

The slates were subjected to wind tunnel testing for driving rain and deluge conditions equivalent to a once in 50-year extreme weather event. This followed the test methods stipulated in CEN/TR 15601: 2012.

Rather them than us.

*CEN/TR 15601: 2012 - Hydrothermal Performance of Building Resistance to Driven Rain for Roof Coverings with Discontinuously Laid Small Elements.



ENQUIRY
12

For further information on Marley's Thrutone low pitch fibre cement tiles please fill in the reader response card.

The devil lies in the detail

Beware of far-fetched warranties warns SIG Roofing

The market for flat roof bituminous torch and felt is flooded with far-fetched warranties promising 25 years or longer. So, it's more important than ever to read the small print and be aware of 'pie-crust' promises. Easily made. Easily broken.

This is particularly relevant following the recent collapse of several manufacturers offering exaggerated warranties – leaving you and your customers with no chance of getting your cash back.

Worth the paper it's written on?

For the most part these warranties are coming from small European manufacturers trading with UK based distributors. They are being cleverly touted to roofing contractors in a desperate bid to build market share in the UK. It's easy to see how you can get sucked

in. You see the low price, you see the great warranty and genuinely believe you've found a bargain with extended peace of mind. And then you find you've got a worthless piece of paper when the company folds.

Category Manager for Flat & Sustainable Roofing at SIG Roofing, Richard Parker explains: *"Contractors, and ultimately customers, are being swayed by these 'incredible' warranties from smaller companies without realising the hidden dangers. The problem is that some of these outfits lack the finances to deal with any claims or issues. Plus, they may not even be around to honour them."*

The devil's in the detail

The standard length of warranty from larger and more reputable companies tends to be around 15 years. These are the guys who are

heavily involved in the specification of products, want to keep their reputation intact and, crucially, want to deal with warranties in the correct way.

Richard adds: *"Extended warranties are now common in the roofing market. With no risk and no worries for up to 25 full years, these offers are very attractive to contractors. However, as with many pie-crust promises, the devil lies in the detail."*

So, think carefully before you fall for a dubious warranty. Read the small print and consider the company's credibility. As Richard says: *"Genuine warranties don't just demonstrate commitment to the quality of the product and its manufacture. They offer assurance that the manufacturer can deal with any claims and issues in the future."*



Pure Genius

Soudal's new 'Genius Gun' delivery system

A gun that makes you a genius? If only that were true this would have been written a lot quicker. Aimed not at expanding your mind but rather at delivering expanding foam, Soudal's Genius Gun combines the best elements of hand and gun methods.

Chances are if you work in the construction industry for any length of time you will at some point use expanding PU foam. The benefits of foams are well known:

- Self-expanding.
- Bond to nearly all surfaces.
- Excellent thermal and acoustic insulation values.
- Fire retardant while being fast and easy to use.
- Durable.
- Energy saving
- Environmentally friendly.

Take Comfort - a perfect alternative to Gun Foam

Soudal's expanding foams have always been available in traditional manual and gun-applied versions. Now you can take comfort, quite literally, with Soudal's latest innovations to maximize convenience while applying PU-Foam.

Soudafoam Comfort is the first product available that incorporates the unique Soudal Genius Gun delivery system.

Comfort offers users the usual benefits of expanding foam but you get the user-friendliness and precision of a gun applied product with the economy of a hand held foam:

- Re-usable - part used cans can be stored and re-used for up to 6 weeks between uses.
- Easy to use - the Genius gun trigger allows for precision application and control.
- Comfortable - Genius gun products can be applied using just one hand – ideal for applications at height and in confined spaces.

An expanding range of applications

PU Foams are extremely versatile and can be used for practically anything, including:

- Installation of door and window frames.
- Sealing and filling of gaps, holes, cavities and wall breakthroughs.
- Insulating against heat loss.

- Sound-proofing.
- Insulating water pipes.
- HVAC ducting (heating, ventilation & air conditioning).
- Bathtubs, tubes etc.
- Installation and sealing of air conditioning units.
- Bonding of corrugated iron sheets and roof tiles.
- Sealing windows against draughts.
- Filling joints between walls and wall panels.
- Sealing and filling connection joints.
- Installation of electrical wiring.

It might not make you a genius but the people behind the product have got to be a bit clever to have managed all that lot.

Soudal

ENQUIRY
13

For more information on Soudal's Genius Gun and Comfort system please fill in the reader response card.

SIG Roofing slams Buyers



When Victor Lustig sold the Eiffel Tower to an unsuspecting Paris scrap merchant in 1925, it was at least the real thing. He just didn't own it. The same can't be said of the increasing amounts of

counterfeit slate coming into the UK. And, according to SIG Roofing Supplies, the leading supply chain experts of roofing materials in the UK and the largest distributor of natural slate in Europe, it poses a worrying threat to merchants and contractors.

The influx follows the recent collapse of the slate market in France and the desperate bid by some Spanish quarries to make up their volumes elsewhere. As a result rust-risk T2 slates are being sold as T1 slate

without any re-badging or altering of their product descriptions. So, if you get offered some 'competitive' slates at a price that seems too good to be true... it probably is.

Unfortunately, some roofers are being tempted by the low price, completely unaware it's a con.

Inconsistent and imperfect

SIGA's Slate Category Manager, Joe Bordas explains: "UK roofers are being duped into thinking they have a genuine bargain. And if that wasn't bad enough this stuff is often so inferior we've already turned it down because it's just not good enough."

The problems caused by inferior natural slate are as old as roofing itself. Riddled with inconsistencies and imperfections the high wastage often translates into higher labour costs too. "Producing inferior quality slate is one thing. Being fooled into believing that the slate is actually high quality T1 slate is scandalous," states Bordas.

Don't be fooled...

So, how can you avoid being hoodwinked? According to Bordas: "Always get your slate from a reputable supplier with a copy of the BS EN12326 Declaration of Conformity. This will let you compare the key physical properties of the slate to make sure it's the best fit for the project in hand. The most critical areas are frost resistance, visible rusting, and structural integrity, and these are all covered by the Declaration of Conformity."

counterfeit slate beware!

Don't take traceability and enforceable warranties for granted or you could run into problems. Once the complaints begin it's often too late. Sadly, it's only when confronted with the serious problems of hidden carbon content, the high risk of rust, damaging micro pyrites and excessive water absorption that the penny drops. That's when it dawns that the high wastage associated with cheap, inferior slate is the least of their problems.

On the level

As of July it's even more important to make sure your suppliers are on the level and to ask for BS EN12326 certification and CE crate labeling. Local Authority Building Control will be looking for this on all products to which the Construction Products Regulation applies, including natural slate.

Bordas goes on: *"The growing trend for extended warranties – some being 100 years – doesn't help matters. You may think you are being offered a safety net, but you're not. Most of the companies won't be around long enough to honour their promises leaving you to face the music. Most slates are 500 million years old to start with, but only highly experienced importers will know how the rock will fare once split, and laid on a roof."*

Make sure you get it right

It's not all bad news though. There are some pretty simple things you can do to make sure you don't come unstuck when choosing natural slate:

- **Don't cut corners.**
- **Always insist on best value, not just the best price.**
- **Select from a reputable source.**
- **Always get a copy of BS EN12326 certification (it also helps compare key physical properties to ensure the best fit for the project).**
- **Trust suppliers that source direct from quarries with longevity of supply – vital, as you may need spares or extras as the project develops.**

SIG Roofing currently sells over 13 million slates a year across the UK via its SIGA collection. These are largely sourced direct from quarries located all over the world in major slate producing countries such as Spain, Wales, China and Canada.

The SIGA range meets the key essential criteria of BS EN12326 test results and certification, CE labeling, consistency and security of supply, and consistency of quality.

Bottom line is you get what you pay for. There's always a cheaper option, but there's also always a reason why it's cheap. So, buy with your eyes wide open. In the long run, your clients will thank you for it!



SIGA
Natural Slate

ENQUIRY
14

For more information on SIGA natural slate please complete the reader response card.

NFRC member awarded MBE for services to charity



Paul Strank, we salute you!

The NFRC is thrilled to congratulate trade member Paul Strank, Managing Director of Paul Strank Roofing Ltd, who was recently awarded an MBE in the Queen's Birthday Honours list.

Paul received the honour for services to charity and to the community of Wimbledon, south west London. The MBE highlights Paul's 40 years of sheer and utter devotion to his local community and his tireless dedication to raising money for a number of children's charities.



You name it he's done it: from running, rattling a tin or even jumping out of a plane. And, along the way he's grown strong bonds with the local community.

Talking about the award, Paul said, *"I am just a roofer and have been doing that since 1969. I thought that honours like this were for pop stars, celebrities and war heroes. I think for a roofer to get an MBE is unusual. You get to hear about it five weeks before it is announced, but*

you have to keep it quiet. The letter says that I have been recommended by the Prime Minister to the Queen to receive an MBE – I must have read it over and over again about 12 times!"

On behalf of NFRC, its members and the industry as a whole, we salute Paul Strank, MBE. And we're looking forward to seeing what charitable work Paul has planned for the future.

The Apprentice

Scottish apprenticeship week shows off traditional roofing skills

Alan Sugar didn't make an appearance – and there weren't any pointless competitions to show whose got the biggest ego. No, this was all about real apprentices showing the valuable skills they've learned.

On the 20th - 21st May, four apprentices from across Scotland came together in St Andrew's Square, Edinburgh for a two-day event, as part of this year's Scottish Apprenticeship week.

The event was designed to raise the profile of apprenticeships to youngsters and companies – creating more recruitment opportunities. And to highlight the importance of apprenticeships to the public and MSPs.

For the second year in a row the National Federation of Roofing Contractors (NFRC) fully supported the event. Apprentices from member companies were there to demonstrate traditional slate roofing techniques on behalf of NFRC. The four apprentices that took part this year were: Calum Murphy (Southwest Roofing Services Ltd), Rory Methven (Ronald G Graham Roofing & Building Ltd) Lewis Miller (Compass Roofing Ltd), and Ross Mann (Bain and Irvine Limited).

A number of high-level MSPs, including Fiona Hyslop the Cabinet Secretary for Culture and External Affairs, came along to the event to show their support. Some were even encouraged to have a go by NFRC President Graeme Millar and the Chief Executive Ray Horwood.

Chairman for the Scottish Region Chris McLean said: *"This is one of many events which NFRC in Scotland is involved in to promote the roofing industry. It's all part of ensuring a skilled workforce is available to repair and maintain properties."*

"This apprenticeship week allowed NFRC to demonstrate to members of the public the excellent roofing skills of our members' apprentices and for young people to consider it as a potential career for them. This excellence in roofing was clearly appreciated by MSPs and government officials who joined us on a day that showed our industry at its best. NFRC is delighted to work with other key stakeholders on such events including Historic Scotland, Edinburgh College, Edinburgh World Heritage Trust and CITB."

The traditional building demonstrations were highly successful. Edinburgh Council and Historic Scotland put a lot of effort into increasing the profile of this event around the city and it certainly paid off.

Speaking to Historic Scotland, who coordinated the event, Fiona Hyslop MSP said *"The enthusiasm from the young people about traditional skills and materials is very encouraging. These apprentices are the key to protecting our rich skills legacy and ensuring they continue long into the future. They are also vital to maintaining the historic built environment."*

NFRC appreciated all the support they received. They were particularly grateful to SIG Roofing & Roofline for donating Greaves Slates for the demos, Edinburgh College for their support, and the companies for allowing their apprentices to take part.

The event showcased the skills young apprentices across the country are learning – and clearly demonstrated you don't need to be on TV to prove you're worthy of watching.



Top marks for Trustmark

TrustMark - the government-endorsed scheme that helps homeowners find trustworthy and reputable tradesmen – is going from strength to strength. Only last month, the government announced a new Industrial Strategy for Construction that pledges to expand the TrustMark scheme to all reputable tradesmen who provide repairs, maintenance and home improvement services. To help steer this growth, new board members have been appointed at TrustMark.

However, the biggest boost of confidence came from a recent survey conducted by TrustMark itself. This revealed that 94% of consumers would have more confidence and trust in tradesmen if they had gone through a full vetting and inspection process to ensure their work met an industry standard.which is exactly what TrustMark is all about!

Also, 50% of people surveyed said they were not confident of the level of consumer protection available to them when they employ tradesmen to work on their homes.which is what the TrustMark logo stands for; a sign that reputable tradesmen are carrying out work for home owners, and not rogue traders!

Since its launch in 2006, Trustmark has come a long way. Currently, there are more than 14,000 individual firms within TrustMark and of course, all NFRC members are TrustMark registered.

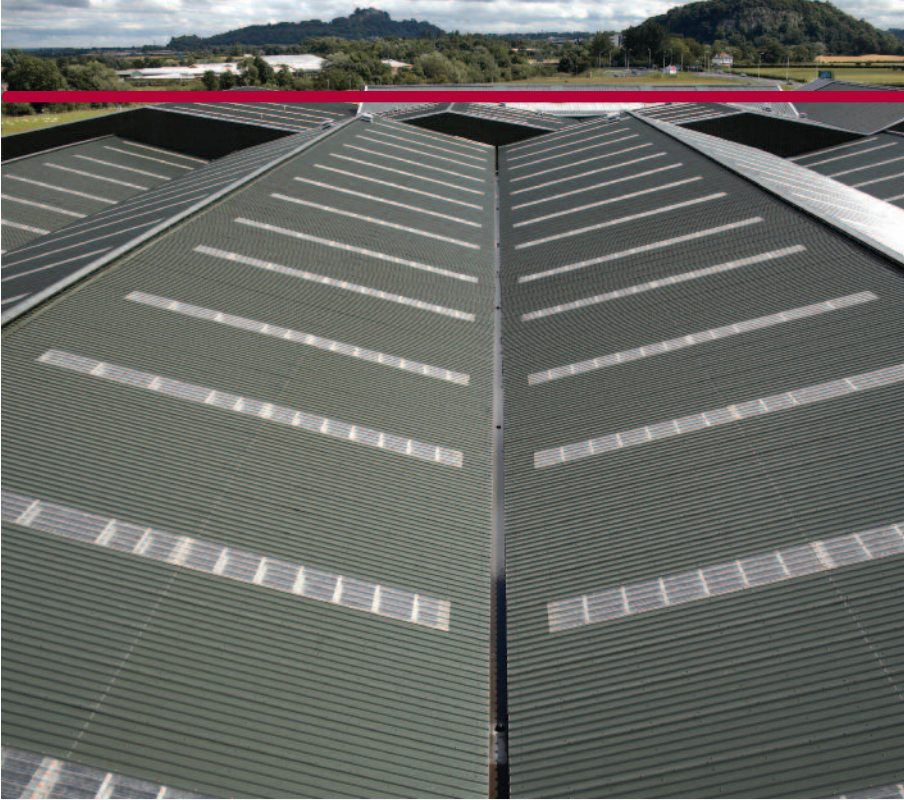


If you're not already signed up, you will miss out, as your future customers want to be confident in the company they are hiring and will be looking to choose a TrustMark-registered business to carry out work on their property. With the support of national and local TV, radio and newspaper coverage, and over 350,000 potential customers visiting the TrustMark website every month looking for listed firms, there's sales opportunities galore.

Roofing contractors registered with

TrustMark have signed up to a code of practice that includes insurance, good health and safety practices, and have customer care at the heart of their business. Within the first six months of joining the scheme, members report seeing an increase in their business.

So, if you're fed up with the cowboys giving your profession a bad name and are proud of your work, it's time to put your trust in TrustMark. Win more quotes, more business and more profit for your bottom line, it's a win, win, win.



SIG
INDUSTRIAL ROOFING



Industrial Roofing - take the easy road

Tackling an industrial roofing project can often seem daunting. Not only are there lots of components and so many manufacturers to deal with, there's the added pressure of responsibility for performance, longevity and quality of materials used, and even the durability of metal systems when installed.

So, industrial roofing might not be for everyone. But there's no need to buckle and pass up on a great business opportunity and the chance to expand your knowledge and roofing skills. Simply choose an expert source and supply partner that can offer a one-stop-shop solution and can take the sting out of it.

Don't try to self-source all the components for the structure from a variety of suppliers, as that's where many contractors go wrong. Having to deal with a large number of suppliers and

manufacturers and never really feeling confident that all of the products will work together can turn into one big nightmare. Instead, engage with a 'one-stop-shop' solutions expert such as SIG Roofing and you'll soon reap the rewards of a solid and consistent supply chain that provides peace of mind for everyone.

Not only has SIG already invested time and energies in sourcing the best and most competitively-priced industrial roofing products, they can often deliver them at speed through local branch networks, as well as guaranteeing continuity of supply. Balance this against having to source the products yourself, and it's a no brainer.

SIG is also more likely to provide tip-top advice and training, as well as sound technical support. Whether it's support on

products and accessories, colour and profile matching, or flashing details for all types of industrial roofing from sheeting, insulation and roof lights, to fixings and fastenings, they are always there to put things right.

So, whether you're called upon to supply and install individual industrial roofing components for a one-off project, or whether you are a specialist roof and wall cladding contractor and are simply looking for a pain-free experience, take the easy road and choose SIG Industrial Roofing to bring peace of mind and added value to your project, and to your customer.

ENQUIRY
15

For more information on Industrial Roofing please complete the reader response card.

New Klover product launches

Dry verge, low pitch roofing underlay and solar panel support.

Three new Klover products are set to make life a whole lot easier for contractors and builders. Feast your eyes on these beauties.

Uni-Click® Dry Verge

This much-awaited product has a wider batten gauge than its predecessor, with a range of 260-350mm.

As a result, you can use it with most large and medium format concrete interlocking tiles including the 15 x 9 Standard Pattern, Ludlow Plus, Mk Stonewold, and even older profiles such as those formerly made by Scotcem.

- Clicks neatly into position.
- Drip tray for added weatherproofing.
- Usable on pitches as low as 12.5°.
- Available in 4 standard colours to match all commonly used tiles.
- Unaffected by settlement.
- No special tools needed, so ideal for merchants.
- Come in packs of 10 (5 packs per carton).
- Convenient Eaves Ridge Pack also available with 2 Ridge Closures, 2 Eaves Closures and nails.

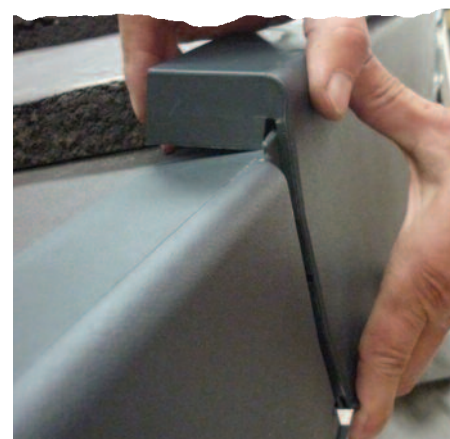


Permo Extreme RS SK2

The latest addition to the renowned Klover Permo range. It has been designed for roofs such as monopitch extensions where the minimum recommended pitch for tiles used on the main roof can't be achieved.

- Suitable for pitches as low as 10°.
- Ideal even for plain tiles, normally laid at 35 - 40°.
- Designed to withstand high temperatures so can even be used with in-roof solar panel systems.
- Lightweight and tear-resistant.
- Double, self-adhesive strips provide a permanent seal of overlaps and immediate weatherproofing protection.
- Highly vapour permeable.

Permo Extreme RS SK2 can also be used with Klover air tightness products such as Permo Extreme Sealant for bonding to eaves flashings or for sealing transverse seams and T-joints.



Klover's Uniplus® Solar Panel Support

- Removes stresses on tiles or slates caused by PV rail fixings.
- Can be used with most clay, concrete interlocking tiles, plain tiles, natural slates and fibre-cement slates.
- Fixing plate with multi-hole fixing pattern gives flexibility.
- Adaptors available to suit a wide variety of rail systems.
- Tested by the TÜV Rheinland Photovoltaic Testing Laboratory and the LGA for load bearing capacity.

KLOBER
Professional roofing accessories

ENQUIRY
16

For further information on Klover's new range of products please complete the reader response card.



Dale Wright, Martin-Brooks' Contracts Director, said: *"Elsecar church is an impressive example of early English design that has remained largely untouched by the ravages of time. Our skilled craftsmen are specially trained in traditional roofing techniques to ensure we can maintain these important architectural gems and preserve the region's heritage for future generations."*

Despite dramatic changes to the community in and around Elsecar, Holy Trinity Church hasn't changed much in its 170 years' history. Built in 1841 by the fifth Earl of Fitzwilliam, the Church of England seat is now undergoing a full programme of refurbishment. Grant aided by English Heritage and coordinated by architects, Smith and Roper of Bakewell, it was project managed by main contractor,

G L Beal and Sons of Mexborough, Rotherham.

Martin-Brooks is listed on the National Federation of Roofing Contractors' (NFRC) heritage register and has been shortlisted for the organisation's heritage award.

More tea, Vicar?

Martin-Brooks tops off church restoration

Sheffield roofing specialists Martin-Brooks have answered the prayers of a former coal mining village by delivering a new lease of life to its local church.

The team of heritage experts completely re-roofed the Holy Trinity Church in Elsecar, Barnsley, to help restore the 19th century sandstone structure to its former glory.

Work on the grade II listed building included the removal of the old roof coverings and replacement of like-for-like natural green Westmorland slate on the nave and chancel, plus Burlington slate on the vestry. Martin-Brooks also substituted the failing parapet gutters with hardy stainless steel alternatives.

In keeping with its original construction, lime and goats' hair mortar was used to fix the new roof in place and no felt was placed under the slates, meaning particular care had to be taken to keep the building dry whilst work was underway.



Tri, tri again

The Roofing Racers are fit for purpose

It may be the largest Triathlon in the world with over 13,000 competitors taking part, including many Lewis Smith, Mel C and Paul Rampacash, but all eyes were on our much-loved Roofing Racers last weekend, as they once again put on the performance of a lifetime in the Virgin Active London Triathlon.

Representing all walks of the roofing, roofline and window industries, over 30 Roofing Racers teams of three shared the three sporting disciplines to tackle a 750 metre swim in the River Thames, followed by a cycle race of 20 kilometres, and a five kilometre sprint. In addition, 33 brave men and women from our industries proudly represented Roofing Racers to tackle the whole course on an individual basis.

As well as some outstanding team and individual efforts on the day, the real pride, however, comes from the collective efforts in helping raise sponsorship pledges for both

Macmillan Cancer Support and Great Ormond Street Hospital charities.

Marketing Manager for Roofing Racers, Stuart Base comments: *"Britain's Summer of sporting success continues! Congratulations to everyone who competed in this year's event and thanks to all their fantastic supporters who helped make the occasion even more special."*

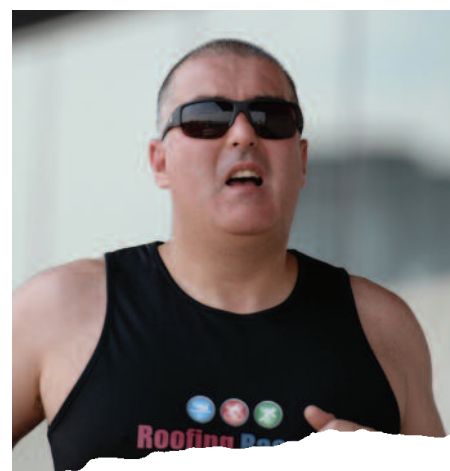
As a result of such supreme efforts, we are now on course to raise the roof on last year's sponsorship with pledges in the region of £35k but whatever happens SIG has pledged to make the difference up to £50k.

Philip Johns, Managing Director of SIG adds: *"Now in our eight consecutive year, Roofing Racers presents a great opportunity for the sporting elite from our industries to show of their skills and try to shave seconds off their personal best,*

but at the end of the day, it's all about mass-participation and it was pleasing to see so many first timers being part of Roofing Racers."

"The popularity of Roofing Racers has grown steadily year-on-year and it is especially gratifying to know that both Great Ormond Street and Macmillan Cancer Support will continue to benefit enormously as a result of all our efforts. Indeed, over the last eight years, Roofing Racers has raised well over £250,000 for these two worthwhile causes."

Commenting on Roofing Racers' past support, Macmillan Cancer Support states: *"We are extremely grateful for 'Roofing Racers' continued support. The money raised by everyone's hard work will help us do even more to improve the lives of people affected by cancer. It could pay for the build costs of ten Macmillan Information*





Roofing Racers



Points, help run a large Macmillan information centre for several months or pay for 10,000 audio versions of the cancer guide. This would be impossible without the help of people like 'Roofing Racers'."

Whilst every athlete was, of course, a winner at the Triathlon, special credit is extended to the following Roofing Racers who gave outstanding performances. Whilst Matt Davies became Roofing Racers' Fastest Individual Man - achieving an impressive time of 01:19:33 - the fastest individual woman was Diane Parperis with 01:32:10. Meanwhile, a team from Avonside Roofing made up of Paul Whalley, Dominic Young and Paul Sherlock represented the fastest Roofing Racers' team

with an extraordinary time of 01:18:45.

After the event, more than 260 friends, family and colleagues of Roofing Racers attended the Tower Hotel, London to celebrate the day's achievements. There was a fun "spoofs" awards ceremony, great food, and Dancing to the early hours: a great time was had by all.

David McGuinness Managing Director of Briggs Amasco adds: *"For those of you who still haven't supported Roofing Racers, it's not too late. All donations are welcome, no matter how big or small, so please pay tribute to your fellow industry colleagues, and help make a difference to many peoples' lives."*

"A special mention must also go to the other generous sponsors who have helped make this year's Roofing Racers event possible. These include;



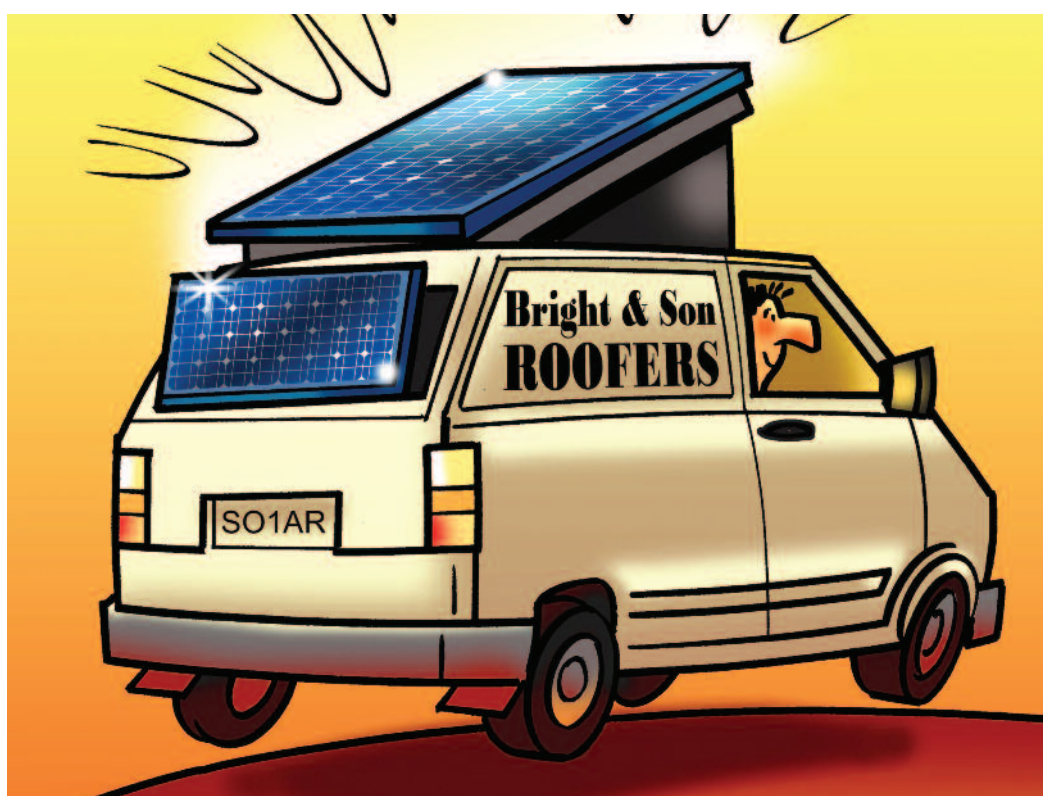
To make a donation, visit
<http://uk.virginmoneygiving.com/team/RoofingRacers2013>

Alternatively, if you wish to donate by cheque, please post it along with a sponsorship cheque to: Roofing Racers, Harding Way, St Ives, Cambridgeshire, PE27 3YJ.

If you'd like to participate in next year's event simply email info@roofingracers.co.uk and we'll be happy to fill you in on all you need to know.

Competent Roofer

Green Deal and ECO accreditation for industry scheme



forward and potentially a huge business advantage for companies in the future. Particularly as homeowners, social housing, and businesses, seek to reduce the cost of their energy bills and comply with legislation.

CompetentRoofer is open to all roofing companies and allows them, in one neat package, to compete for future sustainability projects."



CompetentRoofer has been fully audited by UKAS and is now an 'Accredited Body' for Green Deal and ECO work.

This means the scheme can now audit its members against PAS 2030 and the Green Deal Code of Practice. It can also register members as Green Deal Installers for roof insulation work. Members of CompetentRoofer can already self-certify that their roofing

refurbishment work is compliant with Building Regulations (in England and Wales).

As an extra bonus, those members who register will also be able to display the Green Deal Installer Mark on their vans and promotional materials.

A huge advantage to members

The accreditation also means CompetentRoofers are in a great

position to win Green Deal and Energy Company Obligations (ECO) work in the coming years.

The organisation is already seeing an increase in the number of projects demanding PAS 2030 certification. This looks likely to increase and possibly become the norm in future.

The Chief Executive of CompetentRoofer, Ray Horwood said, "This is a big step

ENQUIRY
17

For more information about becoming a Green Deal/ECO Installer accredited through CompetentRoofer please complete the reader response card.

CISRS

A training framework for scaffolders

Most of us use scaffolding without giving it a second thought. But accidents do happen with around 4000 injuries and 50 deaths every year from shoddy scaffolding.

So, to ensure all those working with scaffolding know how to stay safe the CISRS (Construction Industry Scaffolders Record Scheme) has introduced a mandatory New Entrant Trainee and Scaffolding Labourer course.

Change is on the cards

The new must-have CISRS training means any new Scaffolding Trainee or Scaffolding Labourer must complete a CISRS one-day course before getting their card. This will go live from September 1st 2013.

The new training courses will be carried out at CISRS-approved centres across the UK or in-house if you have adequate facilities and a suitably qualified member of staff.

If you want to train staff in-house you'll need to apply to CISRS and have your eligibility assessed before being allowed to conduct the courses.

Support

Accompanying the new courses, a training and assessment package is available. This includes a PowerPoint presentation, Manual Handling DVD, a bank of test questions,



Have you got the right card?

practical exercises, certificates and other material to assist with the training course.

The CISRS New Entrant Labourer course will include:

- **Relevant regulations and codes of practice.**
- **General responsibilities.**
- **Basic scaffold terminology (components & application).**
- **Servicing of equipment, tube, fittings, etc.**
- **Boards & stock - quality control.**
- **Health, welfare, hygiene & housekeeping.**
- **Electrical safety.**
- **Fire prevention & control.**
- **Noise & vibration.**
- **Work at height.**
- **Accident prevention & reporting.**
- **Personal protective equipment.**
- **Site transport safety (including loading & unloading).**
- **Equipment & tools.**
- **Manual handling (including a practical element).**
- **Lifting equipment – using a rope & wheel.**
- **Questions/test paper.**

Those wanting to apply for their New Entrant card will also need to pass a CITB – Construction Skills Health, Safety and Environment Test (or possess a recognised exemption). But! If you don't apply for the card within two years of the test you'll have to do it all over again.

CISRS scaffolding labourers will also need to repeat the course every five years – as refresher training prior to renewing their

card. And if you already have a card you'll need to complete the course once it expires. All as part of a new 'CISRS Scaffolding Labourer Refresher Training' scheme.

CISRS Training Manager, David Mosley said: *"These new compulsory courses teach all new entrants and labourers the basics of the industry - how to keep safe when working with scaffolding and access solutions. They also make sure the scaffolding sector meets the UKCG requirement. It requires every operative to have received some formal training before being allowed onto their sites."*

More information on the new CISRS courses will be available in the coming weeks at the CISRS website – www.cisrs.org.uk.

Gordon's alive!

The Abutment Soaker Flash. For when you've only got 14 hours to save the roof.

Even if you're not up against the clock, you'll still get it done in double quick time with these new dry soakers from Hambleside Danelaw.

Individual dry soakers have been the saviours of the universal abutment detail for many years. Compatible with most commonly available interlocking and plain tiles, and natural or man-made slates, they are useful in helping to meet the NHBC's objective of reducing the use of mortar on roofs.



**Hambleside Danelaw
Building Products**

Hambleside Danelaw's unique dry soakers provide a lightning quick and simple solution to abutment details. Gone are the days of having to make expensive lead soakers, taking up precious time.

Two new soakers have been added to their individual soaker range giving you increased compatibility matches with tile and slate types:

- **The HD DTS is the perfect partner for interlocking duo tiles such as the Forticrete Gemini, Marley Ashmore and Redland Duo Plain type tiles.**
- **While the HD RCS goes well with interlocking Cambrian Slate types.**

Both soakers fit discreetly under the tile with left and right-handed options available.

Strong, quick, light

- **Made from polypropylene.**
- **Lightweight and easy to handle on the roof.**
- **Very quick to install.**
- **Excellent thermal stability.**
- **Resistant to UV light, acid rain and cracking under temperature change.**

All you have to do for super quick, no hassle installation is simply place an individual soaker over



the batten and against the abutment before placing the tile or interlocking slate on top. You can dress the soaker's upstand with a traditional lead or alternative flashing, with no need to dress over the tile/slate, so you maintain the original appearance of a plain tiled roof.

Fighting against the elements

You can also fit the individual dry soaker in any weather conditions, in the wet or the cold – there's no mortar to freeze or wash away. Once installed with flashing detail they are totally waterproof and you don't have to waste time trying to re-mortar after it chucks it down or gets really cold.

In addition to the individual dry soaker range, the Conti-Soaker is also a great solution for abutment details. The continuous soaker is made from GRP (glass reinforced polyester) and is available in unlippped or lippped tile and slate versions for use with or without additional flashing details.



ENQUIRY
18

For more information on Hargreaves push fit system please complete the reader response card.

Top Brass



Zinc and copper rainwater and drainage products add a touch of class

More and more people are opting for the natural beauty of zinc and copper to complement slate and tile jobs on their 'top-end' homes and properties.

And it's not hard to see why. They may be hard metals but as a natural product they fit in extremely well with other materials such as stone, natural slate and brick.

Over time, they 'weather' to form unique natural patinas, which increase both their real beauty and life span.

BREEAM on!

Zinc and copper are both 100% recyclable which gives them that all-important BREEAM rating: 'Excellent'.

But it's not just about looks and sustainability. Depending on the quality chosen, you will have a 'fit and forget' solution – one that will last between 30 to 40 years. All maintenance-free, other than a spot of leaf clearing.

PVC alternatives are well known for 'creaking', especially in sunlight, and easily become brittle over time. Zinc offers good looks that can easily be compared to cast iron, at a much better price.

SIG Zinc & Copper

SIG Zinc & Copper was launched at EcoBuild 2013 in partnership with Netherlands manufacturer, NedZink and metal processing expert Steadman & Sons (a fellow SIG company).

You can download their new

Gutters & Ancillaries

catalogue from

www.sigzincandcopper.co.uk.

This 16-page brochure is packed with NedZink's most popular gutter systems and rainwater downpipe ranges: Nova, Noir and Naturel. There's also a corresponding range of copper systems and sundries to complete the job down to the finest detail.

The natural beauty of these two metals works brilliantly on a range of properties – and they're sure to keep your best customers from getting brassed-off with their guttering.



ENQUIRY
19

For more information on SIG Zinc and Copper please complete the reader response card.

The Batten

Just exactly how does a timber-roofing

Obviously this is one of the most pressing questions of recent times, and one we're sure you've been pondering. Well, worry not... all is about to be revealed.

Wood – as you are probably aware – grows on trees. The battens which roofers use almost every day of their working lives come from two particular types of tree that grow in European forests, the Pine and the Spruce. These trees are 'softwoods' and are essentially the workhorses of the construction industry. In the UK, we use them for practically everything from floor joists, framing, roof trusses, standard doors, windows and trim. And that goes for most of the houses built each year.

The vast majority of the battens we use in the UK are imported, mostly from Sweden and the Baltics (we don't grow enough trees ourselves). SR Gold is produced and imported from Latvia from high quality Spruce, known commercially as 'whitewood', because of its very pale colour.

In the beginning

The journey from tree to batten really begins in the sawmill, where the felled trees are brought in as cut logs from the forest. They are typically about 25 – 35 cm (10 to 14 inches) in diameter and about 5 metres (15 feet) long. After sorting for shape and size, the logs are de-barked and then they begin their 'conversion' – the process of cutting them into various pieces.



First...

- **A large diameter saw removes two outer 'slices' (side boards).**
- **These are then sent by conveyor to a machine called a 'splitter' (a bank of small circular saws that produce a number of 25mm thick battens).**
- **Side boards can usually be split into 4 or 5 battens.**

Then...

- **The main part of the log is flipped onto its side flatwise.**
- **Two further partially rounded side boards are sliced off, leaving a rectangular chunk of log called a 'cant'.**
- **The additional side boards are immediately sent off for splitting.**
- **The cant is then moved along to another large saw and sliced into rectangular boards: either 38mm or 50mm wide, depending upon the required batten width.**
- **These new square-edged boards are then passed by conveyor to another splitter.**
- **Here they are divided into 4, 5 or 6 battens of 25mm thickness, depending upon the width of the particular board.**

A typical log will produce about 25-30 battens.

It's a simple-but effective process. At every stage any battens which are not square-edged, or which may be bent or otherwise unsuitable for use, are removed from the production process and sent for 'chipping' into wood residue. This is then sold for other uses. All acceptable battens move to the next stage – grading.



Lasting quality

Every batten produced in Latvia for SR Timber is inspected for acceptable quality by experienced, trained personnel. This rigorous process ensures no defective material gets through the system. Only the top quality battens are packaged and marked as 'SR Gold' – these are the ones that meet the criteria for 'BS battens'. This is defined by the rules of the appropriate British Standard, plus additional quality requirements imposed by SR to improve appearance and performance. The SR Gold battens – which fully meet and exceed the BS 5534 requirements – are stamped with their dimensions, timber species code and the TFT 'Diamond Mark' showing independently-assessed 3rd-party Quality Assurance.

All other battens of an acceptable level of quality and appearance are packaged and marked as 'Premium Green'.

of Britain

batten become a batten?



The final production stage is treating the battens. They are impregnated with preservative to meet 'Use class 2' suitable for roofs. SR Gold battens are treated with a wood preservative containing a dye giving them their distinctive orange-yellow colour. The Premium Green battens are treated with a standard copper-based preservative, which leaves them with a greenish tint.

After a suitable period of drying, the final journey of the battens is then onto a ship, bound for a UK port and, at last, to an SIG depot for sale to the trade.

So, there you have it. The Batten of Britain begins with a tree and ends up with a product that is used all over the UK in its tens of thousands every month.



ENQUIRY
20

**For more information
on battens from SR Timber
please complete the reader
response card.**

ROOFING PRODUCTS



ubblink
Flash! And they're gone.
Page 6



RUSSELL
Bumper to Bumper
Page 8



IKO
Setting the standard in
roofing and waterproofing
Don't slate it
Page 10

Redland

The power of three
Page 12



Sandtoft
Smooth operator
Page 13



MARLEY
Eternit
Eternally innovating
Pages 14 & 15



SIGA
Natural Slate
Buyers beware!
Pages 18 & 19



SIGA
INDUSTRIAL ROOFING
Industrial Roofing - take
the easy road. Page 23



KLOBER
Professional roofing accessories
New Klover product
launches. Page 24



Hambleside Danelaw
Building Products
Gordon's alive!
Page 30



SR TIMBER
The Batten of Britain
Pages 32 & 33

INDUSTRY NEWS



Playing with a marked
deck. Pages 4 & 5



SIG
ROOFING SUPPLIES
The devil lies in
the detail. Page 16



NFRC
THE NATIONAL FEDERATION OF
ROOFING CONTRACTORS LIMITED
1892 100 YEARS 2012
Paul Strank, we
salute you! Page 20



NFRC
THE NATIONAL FEDERATION OF
ROOFING CONTRACTORS LIMITED
1892 100 YEARS 2012
The Apprentice
Page 21



TRUST MARK
Government Endorsed Standard
www.trustmark.org.uk
Top marks for Trustmark
Page 22



Roofing Racers
Tri, tri again
Pages 26 & 27



CompetentRoofers
Competent Roofer
Page 28

CISRS

A training framework
for scaffolders. Page 29

ROOFLINE & RAINWATER



Lindab
It's a steel
Page 7



HF
Hargreaves
RAINWATER • SOIL • DRAINAGE
Are you
sitting
comfortably?
Page 9



Soudal
Pure Genius
Page 17



SIG
DESIGN & TECHNOLOGY
Top Brass
Page 31

For further information on products featured in this issue of INSIGHT
please use the response card adding the appropriate enquiry numbers.

Tried & Tested

B	L	T	I	C	N	L	Q	B	B	X	J	R	L	Y	D	D	K	Z	S	S	P
N	F	G	R	S	X	S	X	L	Q	G	J	Z	M	L	I	J	P	V	U	D	V
Y	Y	N	S	M	F	D	O	R	F	L	D	T	E	Z	I	L	Y	J	E	R	T
P	I	H	S	E	C	I	T	N	E	R	P	P	A	C	T	K	P	Z	E	A	R
Y	T	I	L	A	U	Q	C	X	K	B	A	Q	O	C	N	W	S	S	B	D	A
N	H	Z	R	D	E	L	G	W	A	U	J	M	D	U	A	A	I	T	H	N	I
Y	K	W	H	L	V	G	V	F	N	H	L	H	E	R	U	T	R	S	C	A	N
C	E	R	T	I	F	I	C	A	T	I	O	N	R	W	R	G	C	U	A	T	I
N	O	I	T	A	T	I	D	E	R	C	C	A	O	E	O	P	L	R	S	S	N
I	X	C	O	P	X	M	P	E	D	E	N	R	P	T	G	R	L	T	A	S	G
L	O	X	Y	X	N	G	J	K	X	T	O	X	E	C	Y	P	K	C	L	Q	A
C	O	M	P	E	T	E	N	T	Y	M	E	X	C	R	N	P	W	F	M	A	Y



In this Issue of Insight we've covered some important information on quality marking and testing, but can you find the quality terms in our brain taxing new word search. And what's more you could win a fantastic Durafix Driver, worth £100, yep honestly it's a good one.

ASSURANCE

QUALITY

CERTIFICATION

APPRENTICESHIP

STANDARDS

TRAINING

EXPERTISE

ACCREDITATION

COMPETENT

FRAMEWORK

SKILL

WARRANTY

Simply complete the word search, and find the one 'quality assurance word' which is NOT listed above but IS in the word search.

Enter the missing product on to the reader response card, you'll be 'gutted' if you can't find it... Then post it back to us.

Fun and brain taxing!!

Full terms and conditions can be found online
www.insightmag.co.uk

Where can you find an Insight approved stockist?

Anglia

Lee & Son Roofing Merchants	Bedford 01234 325283
Scotplas	Bedford 01234 355568
Asphaltic Roofing Supplies	Cambridge 01223 245262
Asphaltic Roofing Supplies	Colchester 01206 791242
Omnico Plastics	Colchester 01206 871510
Asphaltic Roofing Supplies	Great Yarmouth 01493 659991
Omnico Plastics	Great Yarmouth 01493 659991
Plastic Pipe Supplies	Huntingdon 01480 433888
Omnico Plastics	Ipswich 01473 461461
Regional Roofing Merchanting	Ipswich 01473 749621
Essex Roofing	Kings Lynn 01553 764 202
Asphaltic Roofing Supplies	Luton 01582 456177
Omnico Plastics	Luton 01582 733434
Plastic Pipe Supplies	March 01354 656000
Asphaltic Roofing Supplies	Northampton 01604 765684
Omnico Plastics	Northampton 01604 590925
Wedge Roofing Centre	Northampton 01604 250261
Asphaltic Roofing Supplies	Norwich 01603 487860
Omnico Plastics	Norwich 01603 219430
Lee & Son Roofing Merchants	Peterborough 01733 345004
Omnico Plastics	Peterborough 01733 559166
Summers	Romford 01708 722844
Plastic Pipe Supplies	Stamford 01780 757646
Asphaltic Roofing Supplies	St Ives 01480 467776

London

Asphaltic Roofing Supplies	Cheam 02083 379455
Asphaltic Roofing Supplies	Croydon 02086 866911
Roberts & Burling	Croydon 02086 890481
Asphaltic Roofing Supplies	Kentish Town 02074 855550
Proos Roofing Supplies	Kentish Town 02074 851791
Wedge Roofing Centre	Ladbroke Grove 02089 690022
Asphaltic Roofing Supplies	New Cross 02073 580085
Wedge Roofing Centre	Rainham 01708 555213
Asphaltic Roofing Supplies	Romford 01708 754022
Asphaltic Roofing Supplies	Slough 01753 570526
PBM-DQS	Slough 01753 823479
Asphaltic Roofing Supplies	Southend 01702 511158
PBM-DQS	Southend 01268 725935
Asphaltic Roofing Supplies	Stratford 02085 194805
Asphaltic Roofing Supplies	Tottenham 02088 080459
Wedge Roofing Centre	Tottenham 02088 086816
Wedge Roofing Centre	Waltham Cross 01992 624938
Omnico Plastics	Watford 01923 237110
Project Plastics	Whyteleaf 02086 680600

Scotland

Asphaltic Roofing Supplies	Aberdeen 01224 692000
Scotplas	Aberdeen 01224 589890
Scotplas	Ayr 01292 262885
Scotplas	Bellshill 01698 740066
Asphaltic Roofing Supplies	Broxburn 01506 857613
Asphaltic Roofing Supplies	Dundee 01382 833011
Scotplas	Dundee 01382 489959
Asphaltic Roofing Supplies	Edinburgh 01315 542554
PBM-DQS	Edinburgh 0131 669 8632
Asphaltic Roofing Supplies	Glasgow 01415 565200
PBM-DQS	Glasgow 0141 445 6475
Proos Roofing Supplies	Glasgow 01698 817428
Proos Roofing Supplies	Inverness 01463 250318
Scotplas	Inverness 01463 229239
Asphaltic Roofing Supplies	Kirkcaldy 01592 654913
Border Slate Supplies	Melrose 01835 823640
Proos Roofing Supplies	Paisley 01505 321122

North West

Proos Roofing Supplies	Birkenhead 0151 6452450
Clydesdale Roofing Supplies	Blackpool 01253 398376
Proos Roofing Supplies	Bolton 01204 523336
Summers	Crewe 01270 254724
Clydesdale Roofing Supplies	Leyland 01772 453939
Cladding & Fascia Supplies	Liverpool 0151 2636737
Clydesdale Roofing Supplies	Liverpool 0151 5212100
Asphaltic Roofing Supplies	Manchester 01612 307712

North West continued

Clydesdale Roofing Supplies	Manchester 0161 3203456
Omnico Plastics	Manchester 01204 604342
Scotplas	Preston 01772 798800
Clydesdale Roofing Supplies	St Helens 01744 611471
Scotplas	Stockport 01614 741818
Clydesdale Roofing Supplies	Wigan 01942 615030
Omnico Plastics	Wigan 01942 236200

Yorkshire

Proos Roofing Supplies	Bradford 01274 392433
Proos Roofing Supplies	Grimsby 01472 245667
Roplas	Grimsby 01472 268866
William Smith & Sons	Huddersfield 01484 653373
Kesteven Roofing Centre	Hull 01482 574577
Roplas	Hull 01482 224614
Asphaltic Roofing Supplies	Leeds 01132 631263
Armour Building Products	Leeds 0113 263 1631
Kesteven Roofing Centre	Leeds 0113 2351441
Kesteven Roofing Centre	Rotherham 01709 835500
Scotplas	Rotherham 01709 374951
Roofcare (Northern)	Scarborough 01723 375851
Proos Roofing Supplies	Scunthorpe 01724 854444
Clydesdale Roofing Supplies	Sheffield 0114 2434188
Roplas	Sheffield 01142 560011
Kesteven Roofing Centre	York 01904 476319
Roplas	York 01904 438205

South Coast

Asphaltic Roofing Supplies	Bishops Waltham 01489 896544
Asphaltic Roofing Supplies	Bournemouth 01202 731867
Omnico Plastics	Bournemouth 01202 591677
Omnico Plastics	Christchurch 01202 476363
Omnico Plastics	Eastleigh 02380 610110
Toogood Plastics	Isle of Wight 01983 721511
Proos Roofing Supplies	Poole 01202 682491
Asphaltic Roofing Supplies	Portsmouth 02392 671521
Coleman Roofing Supplies	Portsmouth 02392 690214
Omnico Plastics	Portsmouth 02392 693451
Omnico Plastics	Farlington 02392 379410
Formerton Roofing	Southampton 02380 365555
Asphaltic Roofing Supplies	Waterlooville 02392 258344

South East

Omnico Plastics	Ashford 01233 343660
Asphaltic Roofing Supplies	Brighton 01273 430444
Omnico Plastics	Camberley 01276 462932
Roofing Centre Group	Canterbury 01227 452290
Omnico Plastics	Chatham 01634 670404
Scotplas	Dartford 01322 337223
Asphaltic Roofing Supplies	Eastbourne 01323 500458
Coleman Roofing Supplies	Finchampstead 01189 733788
South Coast Roofing Supplies	Folkestone 01303 226888
Accurate Roofing Supplies	Gravesend 01474 532999
Omnico Plastics	Hastings 01424 853077
South Coast Roofing Supplies	Hastings 01424 853099
Asphaltic Roofing Supplies	Horsham 01403 270640
Omnico Plastics	Hove 01273 421507
South Coast Roofing Supplies	Hove 01273 328640
Coleman Roofing Supplies	Leatherhead 01372 361600
South Coast Roofing Supplies	Lewes 01273 488888
Coleman Roofing Supplies	Milford 01483 425828
Roofing Centre Group	Maidstone 01622 843399
Summers	Maidstone 01622 686140
Summers	Northfleet 01474 533335
Roofing Centre Group	Ramsgate 01843 592772
Asphaltic Roofing Supplies	Sidcup 02083 025451
Roofing Centre Group	Sittingbourne 01795 843967
Omnico Plastics	Tonbridge 01732 361515
Roofing Centre Group	Tunbridge Wells 01892 515599
The Roofing Warehouse	Worthing 01903 201013

Tyne and Tees

Cleveland Roofing Centre	Gateshead 0191 4779474
Scotplas	Gateshead 0191 4786402
Proos Roofing Supplies	Killingworth 0191 2686627
Cleveland Roofing Centre	Middlesbrough 01642 242753
Cleveland Roofing Centre	Stockton 01642 677772
PBM-DQS	Washington 01914 179899

South West

PBM-DQS	Chard 01460 61500
Asphaltic Roofing Supplies	Exeter 01392 250323
PBM-DQS	Exeter 01392 444346
South West Roofing Supplies	Exeter 01392 446001
Asphaltic Roofing Supplies	Newquay 01637 852660
Asphaltic Roofing Supplies	Plymouth 01752 509538
South West Roofing Supplies	Plymouth 01752 344844
Aaron Roofing Supplies	Taunton 01823 323888
South West Roofing Supplies	Torquay 01803 613212

West

Aaron Roofing Supplies	Bath 01225 483828
Aaron Roofing Supplies	Bristol 01179 710085
Asphaltic Roofing Supplies	Bristol 01179 412412
Universal Roofing Supplies	Bristol 01179 663072
Aaron Roofing Supplies	Gloucester 01452 521347
PBM-DQS	Gloucester 01452 387832
Thomas Smith & Son	Hereford 01432 273084
Harris Roofing Supplies	Newbury 01635 521210
Asphaltic Roofing Supplies	Oxford 01865 790303
Asphaltic Roofing Supplies	Swindon 01793 613339
Drainex	Swindon 01793 640480
Omnico	Swindon 01793 617888

Wales

Scotplas	Bangor 01248 362348
PBM-DQS	Bridgend 01656 767427
Asphaltic Roofing Supplies	Cardiff 02920 483939
PBM-DQS	Cardiff 02920 464302
Ryan Roofing Supplies	Cardiff 0292 0378911
Scotplas	Deeside 01244 823555
Harris Roofing Supplies	Machynlleth 01654 702939
PBM-DQS	Merthyr Tydfil 01443 692924
PBM-DQS	Newport 01633 255223
PBM-DQS	Neyland 01646 601699
Proos Roofing Supplies	Porth 01443 681004
Asphaltic Roofing Supplies	Swansea 01792 790272
PBM-DQS	Swansea 01792 795612

Midlands

Asphaltic Roofing Supplies	Birmingham 0121 3273071
Proos Roofing Supplies	Birmingham 0121 5239143
Direct Roofing Supplies	Birmingham 0121 7081515
Scotplas	Birmingham 0121 3597442
Warwickshire Roofing Centre	Coventry 02476 688754
Wedge Roofing Centre	Coventry 02476 220755
Asphaltic Roofing Supplies	Derby 01332 349155
Scotplas	Dudley 01384 472430
Wedge Roofing Centre	Dudley 01384 472420
Asphaltic Roofing Supplies	Leicester 0116 2785262
Footitts Roofing Supplies	Leicester 0116 2778676
Roplas	Leicester 01162 758080
Wedge Roofing Centre	Loughborough 01509 211119
Proos Roofing Supplies	Newark 01636 611880
Armour Building Products	Nottingham 01159 617719
Stephens Roofing Centre	Nottingham 01159 851400
Wedge Roofing Centre	Nottingham 01159 285999
Shropshire Roofing Supplies	Oswestry 01691 654551
Asphaltic Roofing Supplies	Stoke 01782 280567
Proos Roofing Supplies	Stoke 01782 577330
Scotplas	Stoke on Trent 01782 593336
Shropshire Roofing Supplies	Telford 01952 641161

Roofing depots are in blue. Roofline depots are in green.
Drainage depots are in Black