

---

# THE PROFESSIONAL ROOFER'S TOOLS CHOICE

---

- 
- ✓ FLAT
  - ✓ PITCHED
  - ✓ INDUSTRIAL
  - ✓ DRAINAGE
  - ✓ ACCESSORIES

**SIG** ROOFING

[www.sigroofing.co.uk](http://www.sigroofing.co.uk)

# ROOFING TOOLS & ACCESSORIES



## CONTENTS

PAVING & DECKING SUPPORTS AND WALKWAY TILES	6
ROOFING DRAINS, VENTS & ACCESSORIES	14
SPECIALIST ROOFING ITEMS	23
SLATING & TILING TOOLS	27
LEAD TOOLS & ANCILLARIES	31
BUILDING CHEMICALS	34
HEATING TORCHES	35
FIBREGLASS TOOLS	44
HAND TOOLS	48
BITUMEN & ASPHALT MELTING	56
BRUSHWARE & ROLLERS	60
CONTRACTORS EQUIPMENT	63
WORKWEAR	69

# THE **SIG** ROOFING DIFFERENCE

As the UK's leading distributor of specialist roofing related products, expertise and support, we're proud to offer our customers an extensive range of tools and accessories:

**SPEND MORE  
SAVE MORE**

**BULK DISCOUNTS  
ALWAYS AVAILABLE**

**FANTASTIC  
EVERYDAY VALUE**

- ✓ **COMPREHENSIVE RANGE OF PROFESSIONAL TOOLS**
- ✓ **BESPOKE TOOLS FOR FLAT, PITCHED & INDUSTRIAL ROOFING**
- ✓ **ESSENTIAL CORE RANGE PRODUCTS IN STOCK**
- ✓ **FULL RANGE OF PPE, WORKWEAR & BOOTS**
- ✓ **LEADING BRANDS**
- ✓ **FULLY COMPLIANT**
- ✓ **CONSUMABLES AND REFILLS IN STOCK**
- ✓ **COMPETITIVE PRICES**



# ALL YOUR ROOFING NEEDS UNDER **ONE ROOF**

Your local SIG Roofing team are both passionate and knowledgeable. We're here to help you procure the right products:

- ✓ **SPECIALIST IN PITCHED, FLAT AND INDUSTRIAL ROOFING PRODUCTS**
- ✓ **OVER 250,000 ROOFING PRODUCT SKUS**
- ✓ **EXCELLENT TRADING RELATIONSHIPS WITH ALL THE LEADING MANUFACTURERS**
- ✓ **OVER 180 DELIVERY VEHICLES ENSURING RELIABLE DELIVERIES**
- ✓ **EXPERT ADVICE AND SUPPORT**
- ✓ **DEPOTS NATIONWIDE WITH ROOFING PRODUCTS ALWAYS AVAILABLE AND ALWAYS IN STOCK**
- ✓ **DEDICATED CENTRAL SALES OFFICE WITH ESTIMATING AND DIRECT ORDER TAKING**
- ✓ **SAMPLE AND MATCHING SERVICES**



# SUPPORTING CONTRACTORS



## CORE RANGE

With our Core Range you can be confident that the essential products you need will be in stock and ready for delivery or collection EVERY DAY.

## ONE WARRANTY

The ONE Warranty scheme is a free to use warranty for the complete build-up of your roofing projects.

- 15 year product warranty scheme
- Covers all the products in a complete roof build up
- One stop warranty shop
- Suitable for flat & pitched roof build ups

## TRADE CLUB

As a member of Trade Club you get points when you purchase your roofing products and earn rewards every month.

- Collect 1 point for every £1 you spend
- Earn double points on specified products
- Spend your vouchers in branch

**WANT TO KNOW MORE? PLEASE VISIT THE WEBSITE FOR ADDITIONAL INFORMATION, REGISTRATION AND DOWNLOADS ON ALL THESE SERVICES.**

Our policy of continuous product improvement means that the style/colour or manufacturer of delivered product may differ from that illustrated.



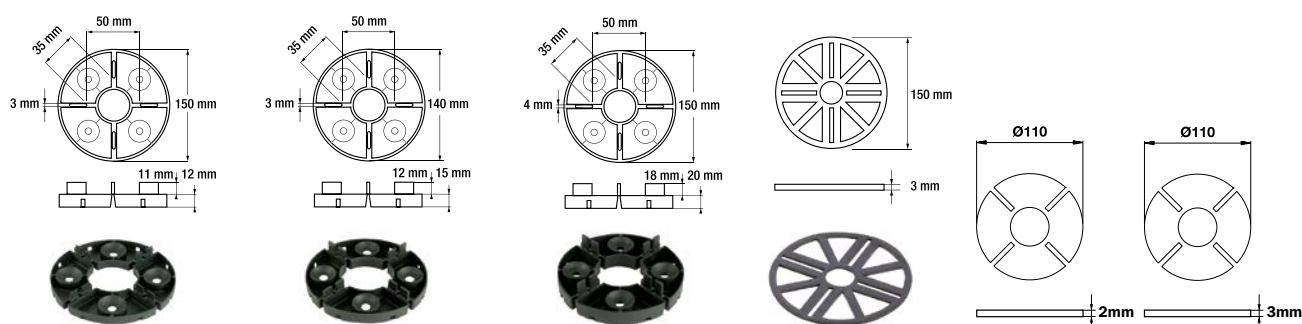
# PAVING SUPPORTS WITH FIXED HEIGHT

eterno|vica

Paver support with non-adjustable, fixed height.

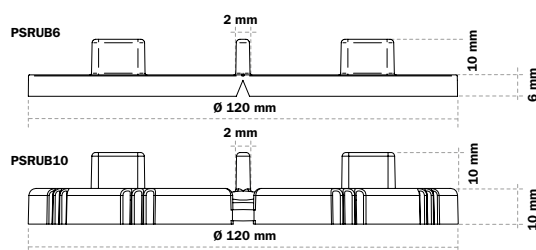
## ADVANTAGES:

- Quick and cheap solution
- Three sizes (12mm, 15mm and 20mm)
- Can be placed on top or under the support
- 10661485 and 10661486 Levelling discs – available in 2mm and 3mm

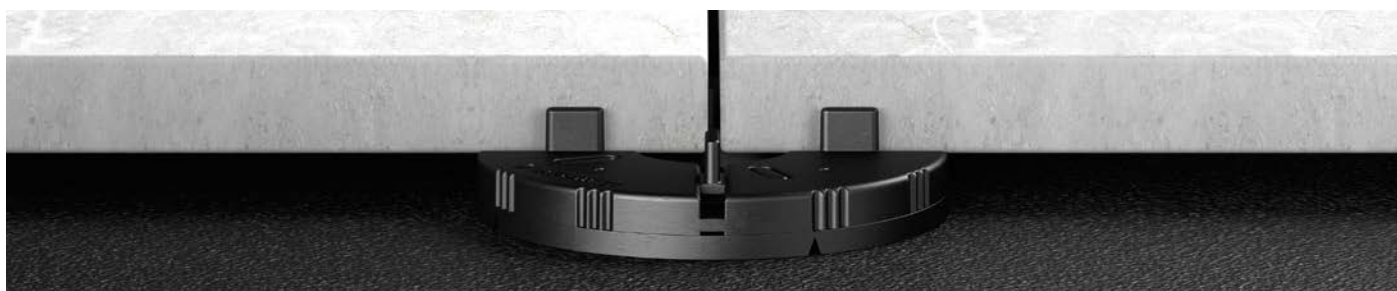


10661482	10660605	10661483	10661484	10661485	10661486
PS20	PS15	PS20 SPEC	PS20LEV shim	LGH2	LGH3

# NEW RUBBER FIXED HEIGHT PAVING SUPPORT



Code	Description
10661487	RUBBER PAVING SUPPORT 6mm - 2mm TAB
10661488	RUBBER PAVING SUPPORT 10mm - 2mm TAB



Our policy of continuous product improvement means that the style/colour or manufacturer of delivered product may differ from that illustrated.

# STAR.T PAVING SUPPORT

eterno|vica

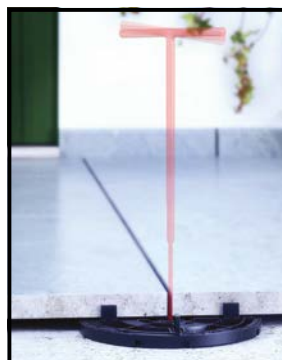
The adjustable support allows for exact adjustments from 10-30mm.

Thanks to its reduced dimensions it is a great ally for renovations: Star.T is able to satisfy the lowest thicknesses thanks to the fixed part measuring just 10mm, and then become adjustable from 10mm to 30mm, by raising any type of ceramic floor, concrete or composite material of any size and weight.

The millimeter adjustment of Star.T allows you to obtain elegant and perfectly level pavings, thus shortening the installation times and conferring stability and precision to the entire pavement.

The Star.T extension is the only one adaptable to Star.T, you can reach the height of the adjustable supports NM1 and SE0; single height for a simple and versatile product: It is positioned under the Star.T increasing its height of 5mm and multiple with the possibility of stacking more extensions in case of need.

10 15  
STAR.T



**10661489**  
Adjustable  
Paving  
Support  
Top



**10661489**  
Adjustable  
Paving  
Support  
Base



**NM Star B**  
Extension



## ADVANTAGES:

- Adjustable to the shallowest depth of 10mm
- Adjustable heights from 10-30mm
- Easily removable tabs for easy fitting
- Varying depths for easy stacking (10mm + 5mm)
- Formed from high quality moulded plastic for strength

Code	Description
10661489	ADJUSTABLE PAVING SUPPORT 10-15mm
10661490	5mm EXTENSION FOR STAR SUPPORT

NMSTART	NMSTARB	Achievable Height
1	-	10-15mm
1	1	15-20mm
1	2	20-25mm
1	3	25-30mm



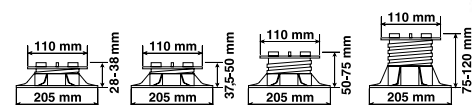
Our policy of continuous product improvement means that the style/colour or manufacturer of delivered product may differ from that illustrated.

# 'SE' SELF-LEVELLING ADJUSTABLE WITH BI-MATERIAL HEAD

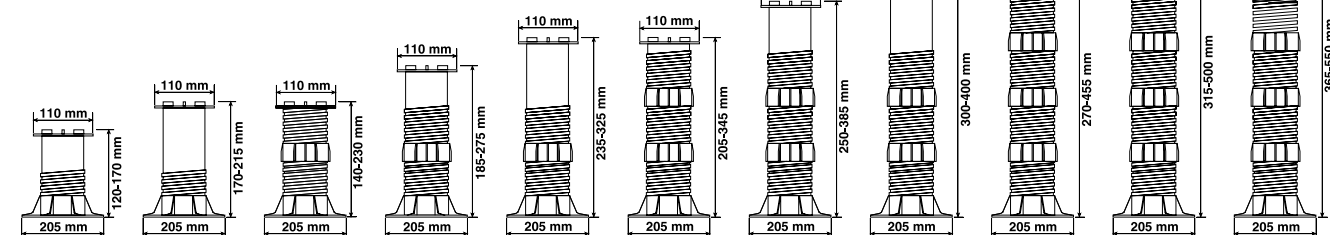
An adjustable self-levelling paving support.

## ADVANTAGES:

- Integrated system that automatically accommodates roofing slopes to 5% variance
- Adjustable heights from 28 – 550mm
- Resistant to temperatures between -40 degree C to 120 degree C
- Smooth support base of 205mm diameter
- Easily removable tabs
- Anti-noise and anti-slip bi-material head
- Suitable for any self-supporting outdoor paving system
- Fully recyclable



10661491	10661492	10661493	10661494
SE 0	SE 1	SE 2	SE 3



10661495	10661496	10661497	10661498	10661499	10661500	10661501	10661502	10661503	10661504	10661505
SE 4	SE 5	SE 6	SE 7	SE 8	SE 9	SE 10	SE 11	SE 12	SE 13	SE 14

Our policy of continuous product improvement means that the style/colour or manufacturer of delivered product may differ from that illustrated.

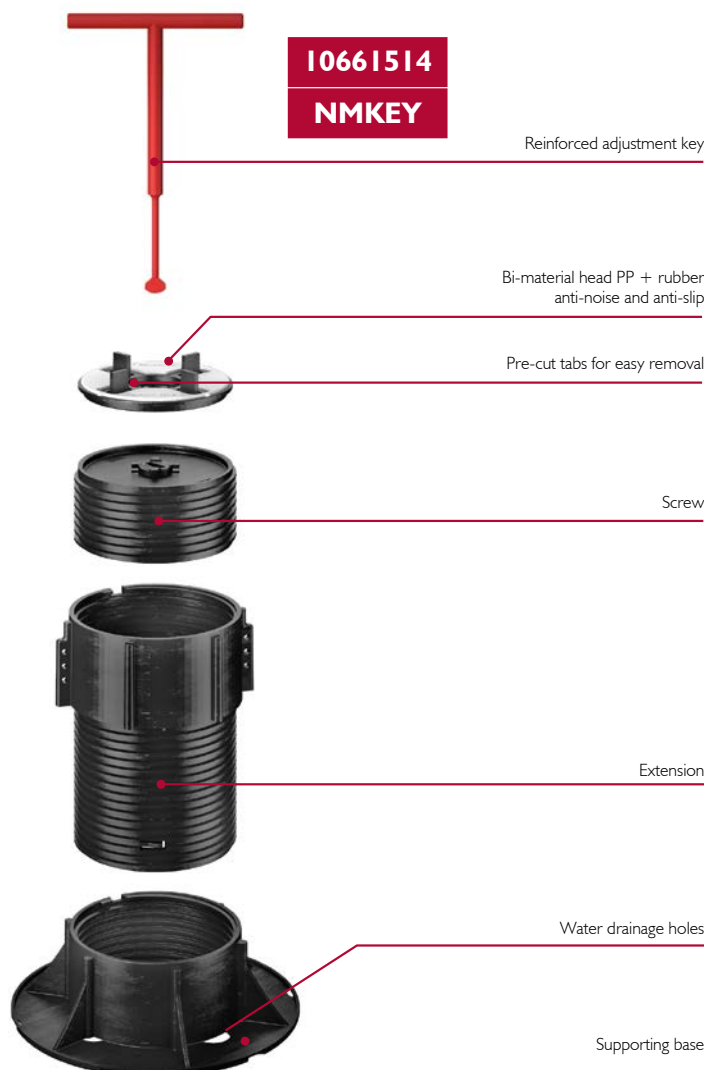
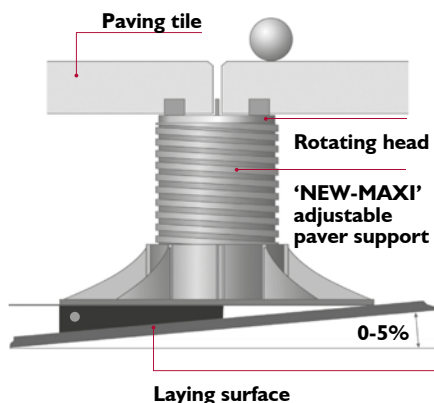
# 'NM' FIXED HEAD ADJUSTABLE PAVING SUPPORT WITH BI-MATERIAL HEAD

eterno|vica

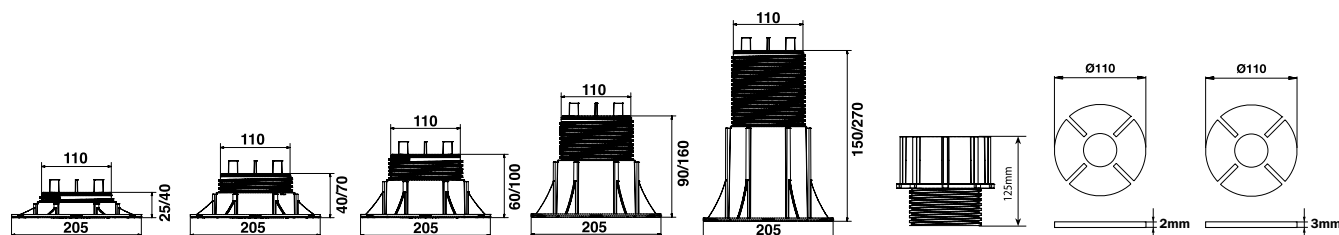
An adjustable system enabling floor height adjustment after fitting.

## ADVANTAGES:

- Precision adjustment from 25 to 935mm
- Possibility of adjusting the height once the floor has been finished, thanks to the exclusive adjustment key
- End with upper part in noise-reducing anti-slip rubber
- Smooth support base of 320cm<sup>2</sup>
- Resistant to weathering, acids, UV rays and wear and tear
- Resistant to temperatures between -40° to 120°C
- Fully recyclable
- Can be used in conjunction with any outdoor flooring
- Easily removable tabs



Code		Height Min-Max	Height +1 I0661512	Height +2 I0661512	Height +3 I0661512	Height +4 I0661512	Height +5 I0661512
I0661507	NM 1	25-40	-	-	-	-	-
I0661508	NM 2	40-70	-	-	-	-	-
I0661509	NM 3	60-100	165-200	275-365	385-500	495-635	605-770
I0661510	NM 4	90-160	195-280	305-415	415-550	525-685	635-820
I0661511	NM 5	150-270	300-390	410-530	520-665	630-800	740-935



I0661507	I0661508	I0661509	I0661510	I0661511	I0661512	I0661485	I0661486
NM1	NM2	NM3	NM4	NM5	NME	LGH2	LGH3

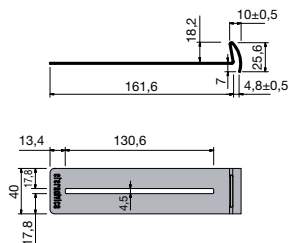
Our policy of continuous product improvement means that the style/colour or manufacturer of delivered product may differ from that illustrated.

# UNIVERSAL EDGE CLIP

eterno|vica

## The perfect join: attractive and functional

The universal edge clip for stability around a perimeter wall. The stainless steel clip stabilizes the pavers whether situated on whole or part (cut) pedestals.



10661513

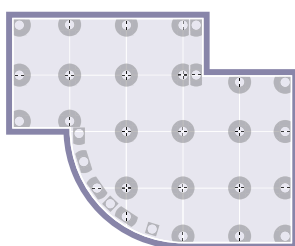
PSCLIP



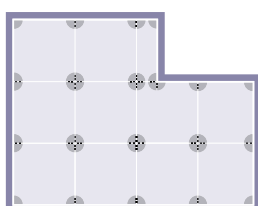
10661514

NMKEY

## Adjustable support installation



## Fixed height support installation



For pavers or tiles that are larger than 500x500mm, it is recommended that an extra paving support (with flat head) should be placed in the centre of the tile.

## CONSUMPTION PER m<sup>2</sup>

Tile size	Supports per m <sup>2</sup>
30 x 30cm	11,2
30 x 35cm	9,5
30 x 40cm	8,3
40 x 40cm	6,25
45 x 45cm	5
50 x 50cm	4
60 x 60cm	2,8

Our policy of continuous product improvement means that the style/colour or manufacturer of delivered product may differ from that illustrated.

# CLIP FOR VERTICAL CLOSURE

eterno|vica

## The sure new way of finishing in style

Our clip for vertical closure is designed to solve a problem typical of many external floors, i.e. how to fill in the gap around the edge when no perimeter wall is present. This solution represents an innovative, easy and elegant way to eliminate gaps around raised floors. The system consists of two special, stainless steel clips for positioning over the head and under the base of the Eterno Ivica support. It creates a firm seat capable of gripping the section of floor cut to size to fill the gap. The use of our floor edge clip effectively prevents horizontal movement in floor slabs.

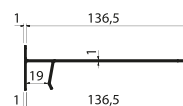


### ADVANTAGES:

- One single clip that can be used for any slab thickness
- Wholly concealed clip, it doesn't interfere with the finish
- Wholly in stainless steel
- Elastic, to allow the slab natural expansion movement
- Wide wall support surface, to spread the slab pressure evenly
- Compatible with the whole PEDESTAL range

10661515

PSCLIPUV



10661516

PSCLIPLC



CLIPS  
FOR 30MM  
AND 40MM  
TILES ARE  
AVAILABLE  
TO ORDER



Our policy of continuous product improvement means that the style/colour or manufacturer of delivered product may differ from that illustrated.

# ‘DS’ DECKING SUPPORTS

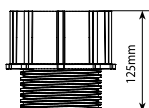
eterno|vica

The universal head is designed to accommodate and permit the fastening of all types of existing joists on the market. The slots on the head enable coupling of the joists from 18mm high.



10661512

NME



Code	Size
10661517	DS1 25-40mm
10661518	DS2 40-70mm
10661519	DS3 60-100mm
10661520	DS4 90-160mm
10661521	DS5 150-270mm

Code	Height Min-Max	Height +1 10661512	Height +2 10661512	Height +3 10661512	Height +4 10661512	Height +5 10661512
10661517	DS1 25-40	-	-	-	-	-
10661518	DS2 40-70	-	-	-	-	-
10661519	DS3 60-100	165-200	275-365	385-500	495-635	605-770
10661520	DS4 90-160	195-280	305-415	415-550	525-685	635-820
10661521	DS5 150-270	300-390	410-530	520-665	630-800	740-935



Our policy of continuous product improvement means that the style/colour or manufacturer of delivered product may differ from that illustrated.

# RECYCLED RUBBER GRANULAR PROMENADE TILES



Code	Description
10660569	GRANULAR RUBBER TILE - BLACK 1M x 1M
10661522	FLEXIBLE RUBBER TILE – RED 1M x 1M
10660570	GRANULAR RUBBER TILE - GREEN 1M x 1M

Code	Description
10661523	FLEXIBLE RUBBER TILE – BLACK 500 x 500mm
10661524	FLEXIBLE RUBBER TILE – RED 500 x 500mm
10661525	FLEXIBLE RUBBER TILE – GREEN 500 x 500mm

## SPECIFICATION

Granular rubber tiles designed for installation on roof terrace, balconys, patios and walkways, they are free draining and manufactured to exacting standards using top quality SBR granular rubber combined with polymer binders to provide an attractive anti slip protective surface.

## MAINTENANCE

All tiles should be cleaned on a regular basis. All tiles contain Carbon Black which may leach and rise to the tile surface.



Available in black, red and green

Code	Size	Weight	Colours	Fixing	Flammability
1000mm Tile	1000*1000*25mm	17.25kg m <sup>2</sup>	Black/Green/Red	Bonded to substrate using 5mm expansion spacing	Conforms to BS 7188:1998
500mm Peg Tile	500*500*35mm	24kg/m <sup>2</sup>	Black/Green/Red	Loose laid on substrate using the integral peg locking system	Conforms to BS 7188:1998

Code	Description
10661526	PUREFLEX TILE ADHESIVE
GRANSPACER	TILE SPACER – 5mm



GRANSPACER

10661526

Our policy of continuous product improvement means that the style/colour or manufacturer of delivered product may differ from that illustrated.

## ROOF DRAIN 'FIBREGLASS'

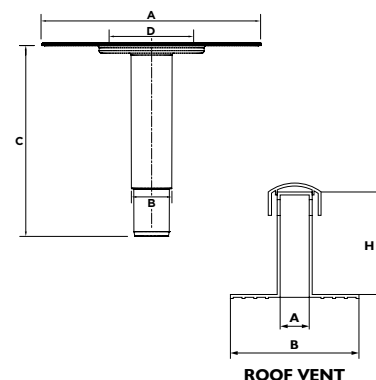
eterno|vica

Available in five diameters 50-75-82-90-100mm. The liquid vertical exit drain includes a fibreglass mesh for bonding, particularly with water based liquid waterproofing materials. The polypropylene flange is designed with a knurled surface on both sides to improve adhesion of liquid waterproofing materials. Small steps on the upper part of the spigot allows upper infiltration water to be captured and drip away.



### LIQUID STRAIGHT WITH FIBREGLASS MESH

Code	Type	for pipes Ø	A	B	C	D
10661527	1 STRAIGHT WITH FIBREGLASS MESH	50	230	42,3	200	42,3
10661528	1 STRAIGHT WITH FIBREGLASS MESH	75	230	70,3	200	66,0
10661529	1 STRAIGHT WITH FIBREGLASS MESH	82	230	76,1	200	71,8
10661530	1 STRAIGHT WITH FIBREGLASS MESH	90	230	84,8	200	80,5
10661531	1 STRAIGHT WITH FIBREGLASS MESH	100	230	94,1	200	89,8
10661615	2 ROOF VENT	100	230	94,1	200	89,8

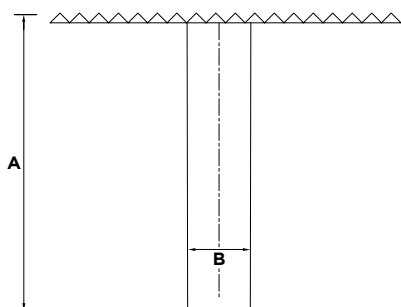


## FIBREGLASS PARAPET ROOF DRAIN

Manufactured from seamless GRP tube with chopped strand 900 weight matting bonded to create bonding surface with the roof membrane.

Please note the membrane must be dressed on to the internal diameter of the drain and consolidated into position to ensure 100% bond.

Code	A	B
10661532	500	82
10661533	500	110



Our policy of continuous product improvement means that the style/colour or manufacturer of delivered product may differ from that illustrated.

# ROOF DRAIN 'TPE' AND 'EPDM'

eterno|vica

## TPE

Manufactured of a special compound of thermoplastic rubber, it is highly resistant against low temperatures (cold flexibility = -40°C) as well as perfectly compatible with all sorts of bituminous waterproofing membrane.

'GENIUS' is the only roof drain in the world with a special circular row of holes and through these holes the waterproofing membrane torched over its flange is totally blended with the membrane below. The spigot is provided with two or three couples of anti-infiltration rings that prevent any infiltration. The product is PATENTED.

## EPDM

The new TPE roof outlets with a smooth flange have been developed as the ideal solution for the adhesion of synthetic EPDM butyl rubber and similar waterproofing membranes.

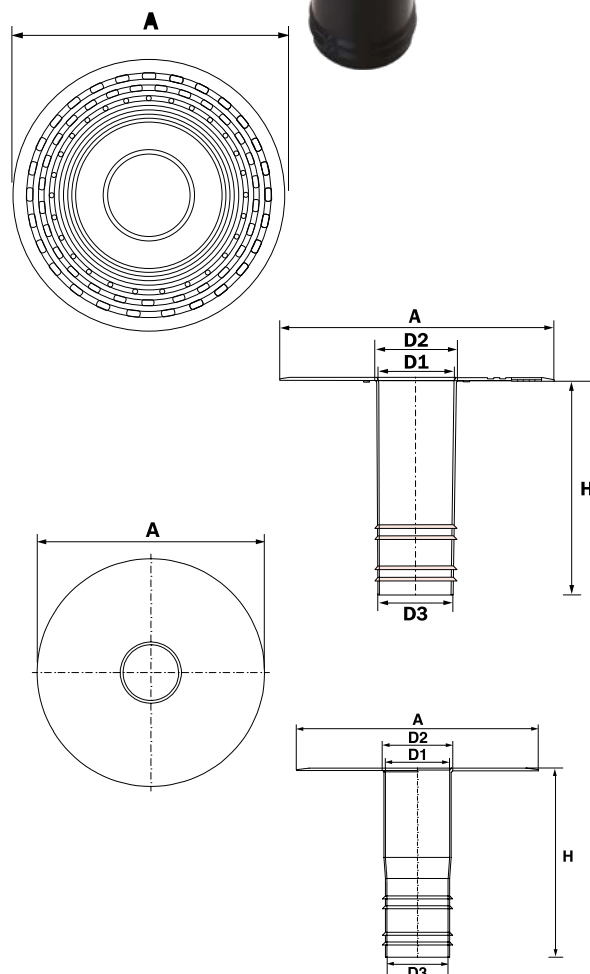


### ROOF DRAIN H 250mm TPE

Code		for pipes Ø	A	D1	D2	D3	H
10660612	3	63	320	51	60	49	250
10660613	3	75	320	63	70	62	250
10661534	3	82	320	69	75	68	250
10660611	3	100	320	86	90	85	250
10661535	3	110	380	95	101	94	250
10661536	3	150	380	134	140	132	250
10661537	3	160	380	140	146	139	250

### ROOF DRAIN H 400mm EPDM

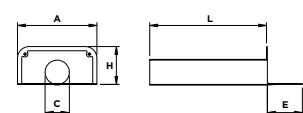
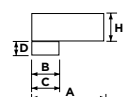
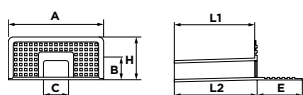
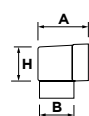
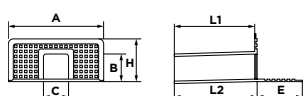
Code		for pipes Ø	A	D1	D2	D3	H
10661577	4	63	320	51	60	49	400
10661578	4	75	320	63	70	62	400
10661580	4	82	320	69	75	68	400



Our policy of continuous product improvement means that the style/colour or manufacturer of delivered product may differ from that illustrated.

# ROOF FITTINGS 'TPE' AND 'EPDM'

eterno|vica



## 100 x 100mm SECTION

Code	Type	A	B	C	E	H	L1	L2
10661538	I TPE 90°	340	92	92	145	168	375	375
10661583	I EPDM 90°	340	92	92	145	168	375	375

## PIPE ADAPTOR 100 x 100mm SECTION

Code	Size	A	B	H
10661539	2 Ø 100	148	96	96

## 100 x 65mm SECTION

Code	Type	A	B	C	E	H	L1	L2
10661540	3 TPE 90°	340	62	92	145	168	425	424
10661584	3 EPDM 90°	340	62	92	145	168	425	425

## PIPE ADAPTOR 100 x 65mm SECTION

Code	Size	A	B	C	D	H
10661541	4 Ø 80-100	218	80	100	62	65

## ANGULAR DRAIN WITH ROUND SPIGOT

Code	for pipes Ø	A	C	E	H	L
10661542	5 63	340	63	150	133	500
10661543	5 75	340	75	150	133	500
10661544	5 80	340	80	150	133	500
10661545	5 90	340	90	150	165	500
10661546	5 110	340	110	150	165	500
10661547	5 125	340	125	150	185	500

Our policy of continuous product improvement means that the style/colour or manufacturer of delivered product may differ from that illustrated.

# ROOF DRAIN 'TPE'

eterno|vica



6



8



7



JUBILEE CLIPS  
MULTIBAND

10M - 25 FIXING CLIPS

10661549



9



10



11



12

## BASE FITTING FOR PIPES

Code	Type	A	B	C	E
10661548	6 TPE PIPE COLLAR	40	175	395	190
10661549	6 FIXING CLIP	10 METRES + 25 CLIPS			

## CORNERS

Code	Type	A	B	H
10661550	7 INTERNAL CORNER MEDIUM	95	-	95
10661551	8 EXTERNAL CORNER MEDIUM	93	173	100

## SUPPORT FOR LIGHTNING-CONDUCTOR NET

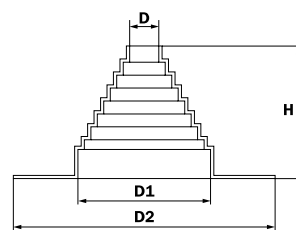
Code	Type	A	B
10661552	9 SUPPORT	15	10
10661553	9 CAP	-	-

## ROOF VENTS

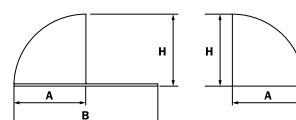
Code	Type	Ø external	A	B	H	HI
10661554	10 FLAT ROOF VENT	75	72	300	270	-
10661555	11 PROTECTION COLLAR	-	75	180	60	-

## MAXI AND INSULATED ROOF VENTS

Code	Type	Ø external	A	B	H	HI
10660615	12 MAXI SIMPLE WALL	105	100	300	270	-

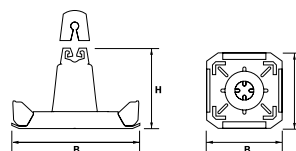


PIPE COLLARS

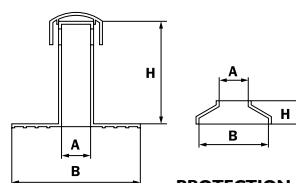


EXTERNAL CORNERS

INTERNAL CORNERS



PIPE & CABLE SUPPORT



ROOF VENT

PROTECTION COLLAR

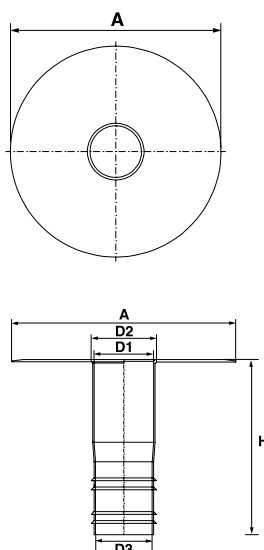
Our policy of continuous product improvement means that the style/colour or manufacturer of delivered product may differ from that illustrated.

# ROOF DRAIN 'PVC'

eterno|vica

## PVC

Manufactured of PVC, it is highly resistant against low temperatures (cold flexibility =  $-40^{\circ}\text{C}$ ) as well as perfectly compatible with any sort of PVC membrane. The flange is totally smooth for a perfect bonding to the waterproofing sheet. According to the length of 250 or 400mm, the spigot is provided with two or three couples of anti-infiltration rings.



### ROOF DRAIN H 250mm

Code		for pipes Ø	A	D1	D2	D3	H
10661557	I	63	320	51	60	49	250
10661558	I	75	320	63	70	62	250
10661559	I	82	320	69	75	68	250
10661560	I	100	320	86	90	85	250
10661561	I	110	380	95	101	94	250
10661562	I	125	380	109	115	108	250
10661563	I	150	380	134	140	132	250
10661564	I	160	380	140	146	139	250

Our policy of continuous product improvement means that the style/colour or manufacturer of delivered product may differ from that illustrated.



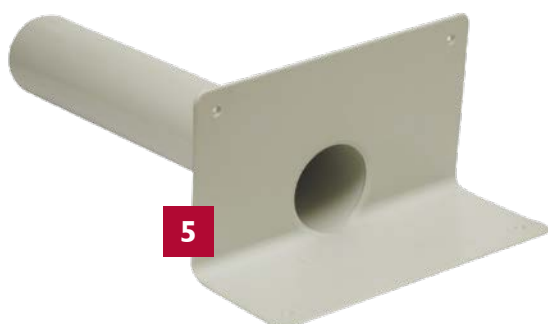
2



3



4



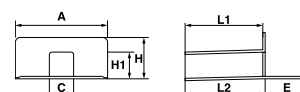
5



6

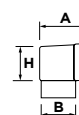
## 100 x 100mm SECTION

Code	Type	A	C	E	H	HI	LI	L2
10661565	2	45°	340	92	145	168	92	375



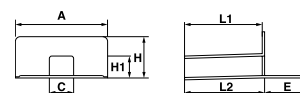
## PIPE ADAPTOR 100 x 100mm SECTION

Code		Size	A	B	H
10661539	3	Ø 100	148	96	96



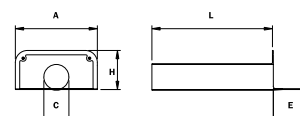
## 100 x 65mm SECTION

Code	Type	A	C	E	H	HI	LI	L2
10661566	4	90°	340	92	145	168	62	425



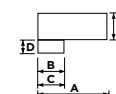
## ANGULAR DRAIN WITH ROUND SPIGOT

Code	for pipes Ø	A	C	E	H	L
10661567	5	63	340	63	150	133
10661568	5	75	340	75	150	133
10661569	5	90	340	90	150	165
10661570	5	110	340	110	150	165
10661571	5	125	340	125	150	165

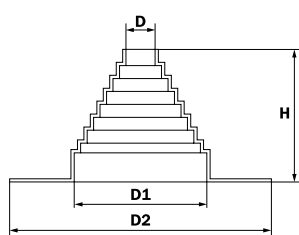


## PIPE ADAPTOR 100 x 65mm SECTION

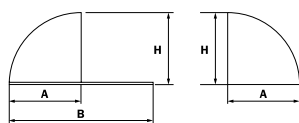
Code	Size	A	B	C	D	H
10661541	6	Ø 80-100	218	80	100	62

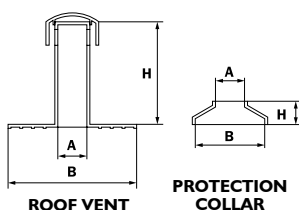


Our policy of continuous product improvement means that the style/colour or manufacturer of delivered product may differ from that illustrated.



PIPE COLLARS


EXTERNAL  
CORNERS

INTERNAL  
CORNERS


ROOF VENT

PROTECTION  
COLLAR

### BASE FITTING FOR PIPES

Code	Type	D	D1	D2	H
10661572	I PVC PIPE COLLAR	40	175	395	190

### CORNERS

Code	Type	A	B	H
10661573	2 INTERNAL CORNER MINI	70	-	70
10661574	3 EXTERNAL CORNER MINI	67	128	70

### ROOF VENTS

Code	Type	Ø external	A	B	H	HI
10661575	4 SIMPLE WALL	75	72	300	225	-
10661576	5 MAXI SIMPLE WALL	105	100	300	270	-
10661555	6 PROTECTION COLLAR	-	75	180	60	-

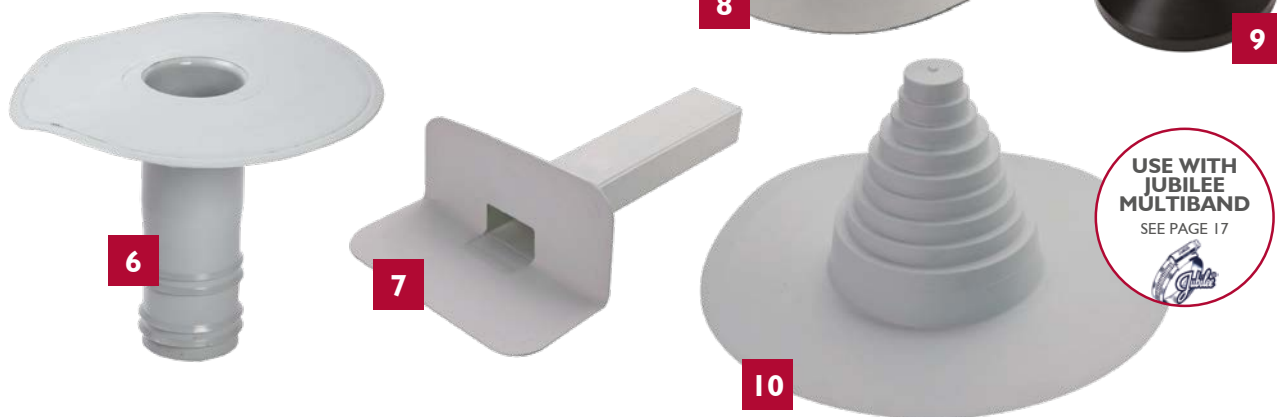
Our policy of continuous product improvement means that the style/colour or manufacturer of delivered product may differ from that illustrated.

# ROOF DRAIN 'TPO'

eterno|vica

## TPO

Manufactured of universal polyolefine white, they are made to guarantee a perfect compatibility to any sort of TPO waterproofing membrane. The flange is totally smooth for a perfect bonding to the waterproofing membrane. The spigot is provided with two couples of anti-infiltration rings.



### ROOF DRAIN H 250mm

Code		for pipes Ø	A	D1	D2	D3	H
10661590	6	63	320	51	60	49	250
10661591	6	75	320	63	70	62	250
10661592	6	100	320	86	90	85	250
10661593	6	110	380	95	101	94	250
10661594	6	150	380	134	140	132	250

### ANGULAR DRAIN 100 x 65mm SECTION

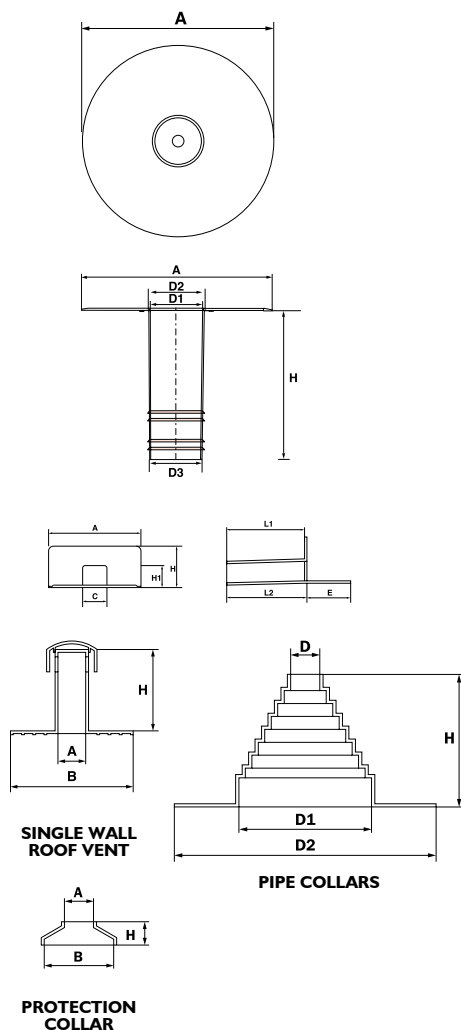
Code	Type	A	C	E	H	HI	LI	L2
10661595	7	90°	340	92	145	168	62	425

### ROOF VENT H 225 – Ø 75mm

Code	Type	Ø external	A	B	H	HI	
10661596	8	SIMPLE WALL	75	72	300	225	-
10661555	9	PROTECTION COLLAR	-	75	180	60	-

### BASE FITTING FOR PIPES

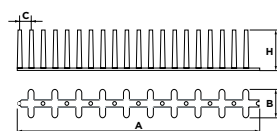
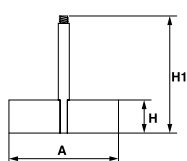
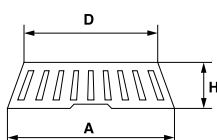
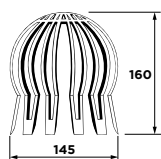
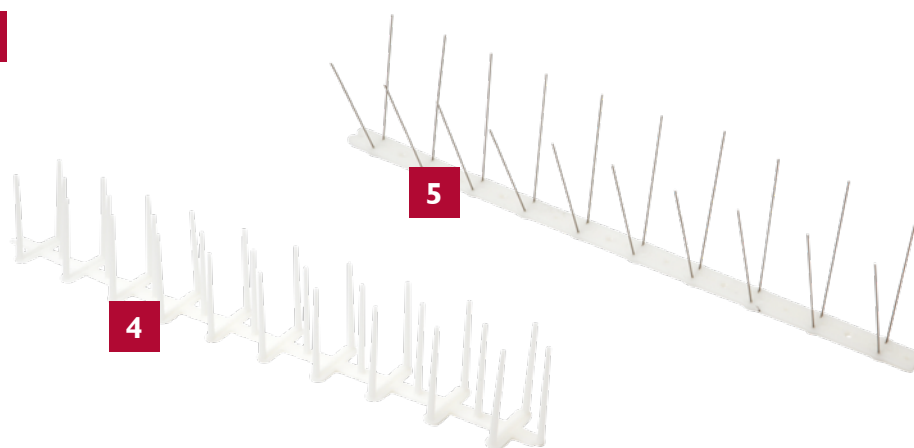
Code	Type	D	D1	D2	H
10661597	10 TPO PIPE COLLAR	40	175	395	190



Our policy of continuous product improvement means that the style/colour or manufacturer of delivered product may differ from that illustrated.

# ROOF FITTINGS UNIVERSAL

eterno|vica



## FLEXIBLE PP LEAF-GUARD

Code	Size	Type
10660598	I 60-140	STANDARD PP

## GRAVEL-GUARD

Code	Type	A	D	H
10660567	2 GRAVEL GUARD	195	170	50

## SPIGOT FOR GRAVEL GUARD

Code	Type	A	H	H1
10660568	3 UNIVERSAL ADAPTOR	130	40	150

## PLASTIC BIRD SPIKE

Code	Colour	A	B	C	H
10660532	4 WHITE	500	55	25	80

## STAINLESS STEEL BIRD SPIKE

Code	Colour	A	B	C	H
10660531	5 STANDARD	500	20	50	110

Our policy of continuous product improvement means that the style/colour or manufacturer of delivered product may differ from that illustrated.

## MULTI-FUEL BIRDCUARD AND RAINCAP

Multi-fuel birdguard prevents birds, vermin and leaves entering the chimney. This product provides good ventilation and gives protection against wind and rain.

### Key Features

Available with bolt or strap fixings  
Fits flue sizes 125-250mm internal diameter



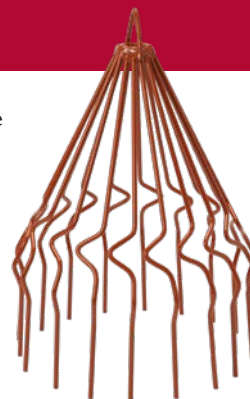
Code	Description
I0661338	MULTI-FUEL BIRDCUARD AND RAINCAP

## SPRUNG BIRD GUARD

Sits in the top of the chimney and, once placed, the arms flare out, gripping the inside wall of the pot. This stops large debris and birds getting in. Simple to fit, a long lasting solution.

### Key Features

Fits flue sizes 155-225mm internal diameter – spring fit



Code	Description
I0661339	SPRUNG BIRD GUARD

## SPIN COWL

Spin Cowl is a revolving cowl, designed to eradicate downdraught whilst the rotating action assists ventilation.

### Key Features

Fully assembled – ready to fit  
Fits pots from 125-250mm diameter  
Tested to BS715:1993 and against BSEN 1856  
Suitable for flue temperatures up to 200°C  
Solves problems of downdraught whilst the rotating action increases ventilation



Code	Description
I0661340	SPIN COWL

## FIXED COWL

A static anti-downdraught cowl. Tested to BS715:1993 and against BSEN 1856 pt2 and hence suitable for all fuel types including gas.

### Key Features

Fully assembled – ready to fit – with birdguard  
Fits flue sizes 125-250mm internal diameter  
Suitable for flue temperatures up to 200°C  
Manufactured from 1.6mm test house approved aluminium  
Available with stainless steel bolt or strap fixings



Code	Description
I0661341	FIXED COWL

GALVANISED  
STEEL



Code	Description
I0661342	300mm x 150mm x 4mm HIP IRON
I0661343	BABY HIP IRON

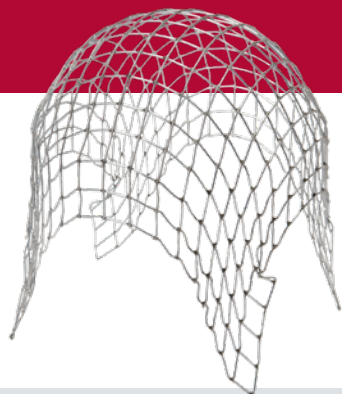


Code	Description
I0660638	COPPER SLATE STRAP (PER 10)

Our policy of continuous product improvement means that the style/colour or manufacturer of delivered product may differ from that illustrated.

## CHIMNEY GUARD

Chimney guard/leaf guard to prevent debris from entering the chimney pot.



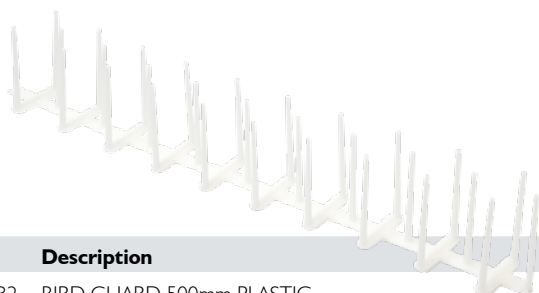
Code	Description
10660534	2.5" CHIMNEY GUARD
10660535	3" CHIMNEY GUARD
10660536	4" CHIMNEY GUARD
10660537	6" CHIMNEY GUARD
10660538	8" CHIMNEY GUARD
10660539	9" CHIMNEY GUARD



Code	Description
10660567	GRAVEL GUARD 50 - 150mm
10660568	SPIGOT FOR GRAVEL GUARD



Code	Description
10660598	LEAF GUARD 60-140mm



Code	Description
10660532	BIRD GUARD 500mm PLASTIC



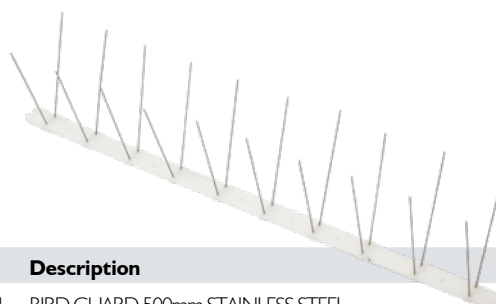
Code	Description
10660595	HALL HOOKS (PKT 10)



Code	Description
10660644	ALLOY VERGE CLIP



Code	Description
10661344	GUTTER GUARD - BROWN - 6M ROLL



Code	Description
10660531	BIRD GUARD 500mm STAINLESS STEEL

Our policy of continuous product improvement means that the style/colour or manufacturer of delivered product may differ from that illustrated.

## EDMA MAT SLATE & PUNCH CUTTER

The EDMA 10660261 Mat Slate & Punch Cutter is a high quality tool for use in cutting and punching roof slate tiles. It features spring loaded handles for power, precision cutting and comes with ergonomic soft grip handles.

### Key Features

- Lightweight and compact
- Ideal for cutting punching roof slate tiles
- Single hand compound action
- Soft grip handles
- Replaceable blade and punch

**BEST  
SELLER**



Code	Description
10660261	EDMA SLATE CUTTER WITH PUNCH

## EDMA MAT COUP SLATE CUTTER

The EDMA Mat Coup Slate Cutter is a high quality tool for use in cutting roof slate tiles. It features spring loaded handles for power and precision cutting, will cut slate up to 7mm thick and comes with ergonomic soft grip handles.

### Key Features

- Lightweight and compact
- Ideal for cutting roof slate tiles
- Single hand compound action
- Cuts up to 7mm thick slates
- Soft grip handles



Code	Description
10660264	EDMA SLATE CUTTER NO PUNCH

## EDMA SLATE KIT

Comprises of a large sturdy plastic tool box with a carry handle and range of tools included.

### Includes

- 1x EDMA slate cutter with punch
- 1x Lead snips
- 1x Chalk line
- 1x Chalk flask
- 1x Utility snips
- 1x Tool box



Code	Description
10661348	EDMA ROOFERS STARTER PACK

Our policy of continuous product improvement means that the style/colour or manufacturer of delivered product may differ from that illustrated.

## EDMA MAXI-PRO ROOFER PACK

The EDMA 10661349 Maxi-Pro Roofer Pack offers a high quality package ideal for professional builders and roofers. The slate cutter features an integrated hold punch and will shape slate, eternit and fibre without any dust or crumbling.

### Key Features

- Lightweight and compact
- Ideal for cutting punching roof slate tiles and cutting zinc/PVC
- Single hand compound action
- Soft grip handles
- Long life
- Cuts without any dust or crumbling
- Tinsnip has non-slip serrated blades



Code	Description
------	-------------

10661349	EDMA PROFESSIONAL ROOFER SET (FLYER & CUTTER)
----------	---



Code	Description
------	-------------

10660419	EDMA MASTERCUT
----------	----------------



Code	Description
------	-------------

10661350	EDMA TOP BLADE
----------	----------------



Code	Description
------	-------------

10661351	EDMA CUTTING DIE
----------	------------------



Code	Description
------	-------------

10661737	EDMA DRILLING PUNCH
----------	---------------------



Code	Description
------	-------------

10660262	EDMA REPAIR KIT
----------	-----------------



Our policy of continuous product improvement means that the style/colour or manufacturer of delivered product may differ from that illustrated.



Code	Description
------	-------------

I0660271	BREAK IRON 1 POINT
----------	--------------------



Code	Description
------	-------------

I0660270	BENCH IRON 2 POINT
----------	--------------------



Code	Description
------	-------------

I0661352	SLATE CHOPPER
----------	---------------



Code	Description
------	-------------

I0660272	SLATERS AXE RIGHT HAND
----------	------------------------



Code	Description
------	-------------

I0660273	SLATERS AXE LEFT HANDED
----------	-------------------------



FOR  
ACCURATELY  
BEDDING  
RIDGE TILES

Code	Description
------	-------------

I0660617	HIP RUNNERS
----------	-------------

## EDMA SLATE CUTTERS



### EDMA Roll Mat – 600mm Slate Cutter

#### Key Features

2 different working positions: straight position for ground work and tilted position for roof work.

Easily attached to roof battens thanks to its notches.

Large cutting platform graduated every 10mm.

Square gauges for regular straight and angular cuts.

Cutting trolley guiding on bearings and rubber end stops.

Carrying strap and dust collector included.

For natural and synthetic slates.

Trolley locking system.

NEW  
PRODUCT



Code	Description
------	-------------

I0661353	EDMA ROLL MAT – 600mm SLATE CUTTER
----------	------------------------------------

### EDMA Small Slate Guillotine Machine

#### Key Features

Mounting hook for fixing to a lathe or bench.

Ideal for cutting up to 7mm thick slate tiles.

Lightweight and compact.

210mm capacity.

Highly durable design.

Heavy-duty design.



Code	Description
------	-------------

I0660265	EDMA PRO MAT COUP 210
----------	-----------------------

Our policy of continuous product improvement means that the style/colour or manufacturer of delivered product may differ from that illustrated.



Code	Description
10660512	DIMAR DOUBLE TIP SCRIBE



Code	Description
10660513	SINGLE TIP SCRIBE



Code	Description
10660529	SLATE RIPPER FORGED PRO



Code	Description
10660263	STAINLESS STEEL SLATE RIPPER PROFESSIONAL
10660528	SLATE RIPPER - ECONOMY



Code	Description
10660280	EDMA WOOD SHAFTED SLATERS HAMMER



Code	Description
10660285	GERMAN PATTERN SLATERS HAMMER



Code	Description
10660281	SLATERS HAMMER STEEL SHAFT



Code	Description
10660291	ESTWING SLATERS PICK

Our policy of continuous product improvement means that the style/colour or manufacturer of delivered product may differ from that illustrated.

## DOUBLE SLATE PUNCHING MACHINE

Heavy duty double hole slate punch machine for slate up to 12mm thick.

### Key Features

Fully adjustable

Can be fixed to a work bench



Code	Description
10661738	DOUBLE SLATE PUNCHING MACHINE
10661356	SPARE MACHINE PUNCH FOR DOUBLE SLATE PUNCHING MACHINE

## MULTI BORER

For cutting holes in slate with just one turn of the handle British made heavy duty tool.

### Key Features

Right or Left hand operation



Code	Description
10661739	MULTI BORER
10661357	SPARE PUNCH FOR MULTI BORER



Code	Description
10660530	BATTEN GAUGE



Code	Description
10661358	BATTEN LIFTER



Code	Description
10660284	LONG HANDLED TILE NIBBLER



Code	Description
10660282	TILE CROPPER HEAVY DUTY
10660283	CROPPER SPARE BLADES

Our policy of continuous product improvement means that the style/colour or manufacturer of delivered product may differ from that illustrated.

## OXY TURBO GAS WELDING KIT

The Oxy Turbo 90 Kit is the smallest autogenous welding system available.

It is compact, powerful and allows the end-user to make professional welding being particularly suitable for small roofing works.

The product safety is guaranteed by four flashback arrestors with double protection: one on the pressure reducer, one on the gas tap and two integrated in the handgrip.

Supplied with disposable Gas & Oxygen bottles (spares available separately) and accessories in an elegant space-saving metal trolley.

Compact and highly effective, the weight of the kit is minimal at 5kgs. A practical handle and two blocking devices for bottles make it possible to carry the set everywhere.

### Includes

- Valved welding torch with standard nozzle
- Hoses with check valves
- Oxygen and turbo gas regulators
- Stella nozzle set
- Carry frame
- 2 brazing rods
- Goggles
- Spark lighter
- Instructions



Code	Description
I0660495	OXY TURBO GAS WELDING KIT



Code	Description
I0660496	OXY TURBO OXYGEN REFILL
I0660497	OXY TURBO GAS REFILL



Code	Description
I0660498	OXY SPARE NECK TUBE



Code	Description
I0661616	OXY TURBO HANDSET & HOSE ASSEMBLY



Code	Description
I0661359	OXYTURBO STELLA NOZZLE SET

Our policy of continuous product improvement means that the style/colour or manufacturer of delivered product may differ from that illustrated.



Code	Description
I0661361	ROSE SMALL (60mm)
I0661362	ROSE MEDIUM (90mm)
I0661363	ROSE LARGE (100mm)



Code	Description
I0661618	DOME HEAD/DOT (15mm)



Code	Description
I0660478	BOSSING STICK WOOD



Code	Description
I0661366	BENDING STICK WOOD



Code	Description
I0660488	SETTING STICK WOOD



Code	Description
I0661360	RIVET HEAD (30mm)



Code	Description
I0660594	HALL CLIP 96mm - 18mm PER 50
I0661364	LARGE HALL CLIP 16mm - 26mm



Code	Description
I0660473	SMALL WOOD LEAD DRESSER
I0660474	MEDIUM WOOD LEAD DRESSER
I0660475	LARGE WOOD LEAD DRESSER



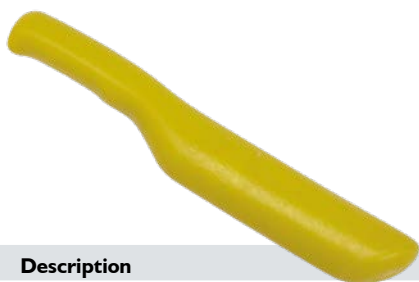
Code	Description
I0660481	BOSSING MALLET SMALL
I0660482	BOSSING MALLET MEDIUM
I0660483	BOSSING MALLET LARGE

Our policy of continuous product improvement means that the style/colour or manufacturer of delivered product may differ from that illustrated.



Code	Description
------	-------------

10660484	CHASE WEDGE SMALL
10660485	CHASE WEDGE MEDIUM
10661367	CHASE WEDGE LARGE



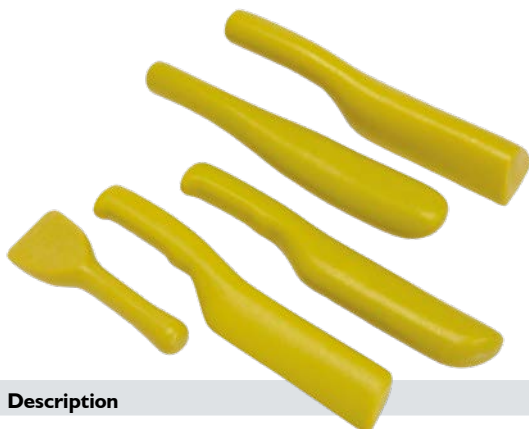
Code	Description
------	-------------

10660479	BOSSING STICK PLASTIC YELLOW
----------	------------------------------



Code	Description
------	-------------

10660489	SETTING STICK PLASTIC
----------	-----------------------



Code	Description
------	-------------

10660499	PLASTIC LEAD DRESSER KIT
----------	--------------------------



Code	Description
------	-------------

10660492	LEAD BENDER TOOL
----------	------------------



Code	Description
------	-------------

10660476	SMALL PLASTIC LEAD DRESSER YELLOW
10660477	MEDIUM PLASTIC LEAD DRESSER YELLOW
10661368	LARGE PLASTIC LEAD DRESSER



Code	Description
------	-------------

10660480	BENDING STICK PLASTIC
----------	-----------------------



Code	Description
------	-------------

10660490	PLASTIC CHASE WEDGE
----------	---------------------



Code	Description
------	-------------

10660556	FLASH BAND 10M X 100mm
10660557	FLASH BAND 10M X 150mm
10660558	FLASH BAND 10M X 225mm
10660559	FLASH BAND 10M X 300mm



Code	Description
------	-------------

10660257	S&J EXTRA CUT SNIPS
----------	---------------------

Our policy of continuous product improvement means that the style/colour or manufacturer of delivered product may differ from that illustrated.



Code	Description
I0661369	LEAD WORK SCRAPER



Code	Description
I0660491	RUBBER Mallet



Code	Description
I0660520	LEAD KNIFE



Code	Description
I0660493	PLASTIC BOSSING Mallet



Code	Description
I0660486	SEAMING PLIER 100mm STRAIGHT
I0660487	SEAMING PLIER 100mm CRANKED



Code	Description
I0660463	10" TINSNIP



Code	Description
I0660258	EDMA FLYER AVIATION SNIPS



Code	Description
I0661370	EDMA FLYER METAL SHEAR BLADE 75mm



Code	Description
I0660261	EDMA SLATE CUTTER WITH PUNCH



Code	Description
I0661349	EDMA PROFESSIONAL ROOFER SET (FLYER & CUTTER)

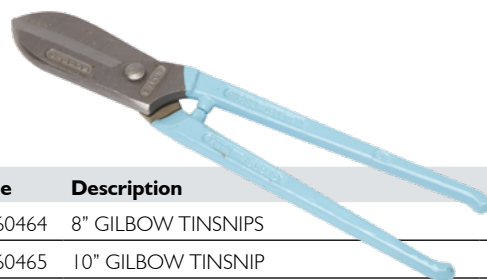
Our policy of continuous product improvement means that the style/colour or manufacturer of delivered product may differ from that illustrated.



Code	Description
10661378	GILBOW G56 JEWEL SNIP



Code	Description
10661379	LEFT H. GILBOW G67 TINSNIP
10661380	RIGHT H. GILBOW G69 TINSNIP



Code	Description
10660464	8" GILBOW TINSNIPS
10660465	10" GILBOW TINSNIP
10660466	12" GILBOW TINSNIP



Code	Description
10661381	10" DUCKBILL LEAD SNIPS



Code	Description
10661526	PU TILE ADHESIVE



Code	Description
10661382	WEATHER MATE SEALANT



Code	Description
10661383	MASTIC/SKELETON GUN



Code	Description
10661384	POWER PLUS MASTIC GUN



Code	Description
10661385	ROOFER BITUMEN REMOVER

Our policy of continuous product improvement means that the style/colour or manufacturer of delivered product may differ from that illustrated.

## TURBO SELF IGNITION TORCH KIT

High quality self-igniting torch, igniter located on the head of the torch, fully adjustable. Includes 5m hose and 0-4 bar regulator.

Please note these are factory assembled and parts are non-interchangeable.

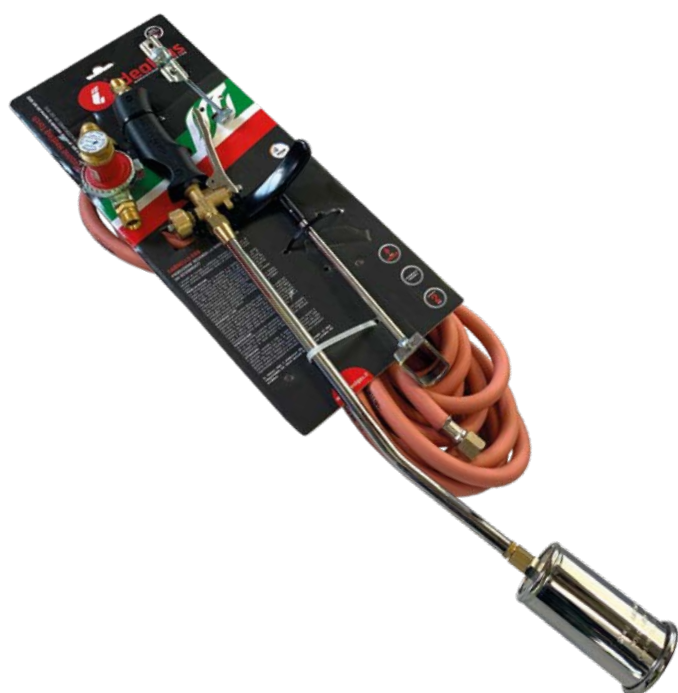
Code	Description
I0660550	TURBO SELF IGNITION 180/50 TORCH WITH ACCESSORIES
I0660551	TURBO SELF IGNITION 180/50 TORCH WITH ACCESSORIES 10M HOSE
I0660552	TURBO SELF IGNITION 380/50 TORCH WITH ACCESSORIES
I0660553	TURBO SELF IGNITION 380/50 TORCH WITH ACCESSORIES 10M
I0660554	TURBO SELF IGNITION 600/50 TORCH WITH ACCESSORIES
I0660555	TURBO SELF IGNITION 600/50 TORCH WITH ACCESSORIES 10M HOSE
I0661386	TURBO SELF IGNITION 180/50 TORCH ONLY
I0661387	TURBO SELF IGNITION 380/50 TORCH ONLY
I0661388	TURBO SELF IGNITION 600/50 TORCH ONLY



Code	Description
I0660342	5M LENGTH ARMoured HOSE INC CRIMPS AND FITTINGS
I0660341	10M LENGTH ARMoured HOSE INC CRIMPS AND FITTINGS

## IDEAL TORCH KIT

Code	Description
I0660596	IDEAL 50 GAS TORCH AND HEAD AND NECK



Code	Description
I0660340	5M LENGTH 8mm ORANGE HOSE INC CRIMPS AND FITTINGS
I0660337	10M LENGTH 8mm ORANGE HOSE INC CRIMPS AND FITTINGS
I0660338	15M LENGTH 8mm PROPANE HOSE INC CRIMPS AND FITTINGS
I0660259	20M LENGTH 8mm PROPANE HOSE INC CRIMPS AND FITTINGS
I0660339	30M LENGTH 8mm PROPANE HOSE INC CRIMPS AND FITTINGS



Our policy of continuous product improvement means that the style/colour or manufacturer of delivered product may differ from that illustrated.

# GRÜN

## GRÜN TORCH COMPLETE KIT

The handgrip with solid brass workmanship to withstand the workload. The controls give graduated adjustable working flame. Tube manufactured from strengthened, nickel plated, steel pipe. Extra strong screw threads. Unbreakable heads manufactured from refined stainless steel. Includes 5m hose and 0-4 bar regulator.

Code	Description
10661391	GRÜN 200/45 TORCH COMPLETE KIT
10661392	GRÜN 350/45 TORCH COMPLETE KIT
10661393	GRÜN 600/45 TORCH COMPLETE KIT



## GRÜN SUPER TURBO DRYER



Code	Description
10661394	GRÜN SUPER TURBO DRYER

## GRÜN TORCH ONLY



Code	Description
10661395	GRÜN 200/45 TORCH ONLY
10661396	GRÜN 350/45 TORCH ONLY
10661397	GRÜN 600/45 TORCH ONLY

## GRÜN TITANIUM TORCH

### Small:

100mm arm.  
50mm head/burner.

### Large:

500mm arm.  
50mm head/burner.



Code	Description
10661398	GRÜN SMALL TITANIUM TORCH
10661399	GRÜN LARGE TITANIUM TORCH

**The handgrip with solid brass workmanship to withstand the workload.**

**The controls give graduated adjustable working flame.**

**Extra strong screw threads.**

Our policy of continuous product improvement means that the style/colour or manufacturer of delivered product may differ from that illustrated.

# GRÜN

### GRÜN GAS TORCHES

Code	Description
10661400	GRÜN 2 HEADED TORCH/HANDLE/NECK TUBE
10660575	GRÜN 2 HEADED TORCH KIT INCLUDING TORCH/HANDLE/NECK TUBE/HOSE/REGULATOR
10661401	GRÜN 4 HEADED TORCH/HANDLE/NECK TUBE
10660576	GRÜN 4 HEADED TORCH KIT INCLUDING TORCH/HANDLE/NECK TUBE/HOSE/REGULATOR



### GRÜN TORCH HANDLE

Code	Description
10661402	GRÜN TORCH HANDLE

Torch handle made with high quality brass fittings.



### GRÜN BURNER HEAD

Code	Description
10660571	GRÜN 45mm BURNER HEAD
10661403	GRÜN 55mm BURNER HEAD
10660572	GRÜN 65mm BURNER HEAD



### GRÜN NECK TUBE

Code	Description
10661404	GRÜN 100mm NECK TUBE
10660573	GRÜN 200mm NECK TUBE
10660574	GRÜN 350mm NECK TUBE
10661405	GRÜN 600mm NECK TUBE



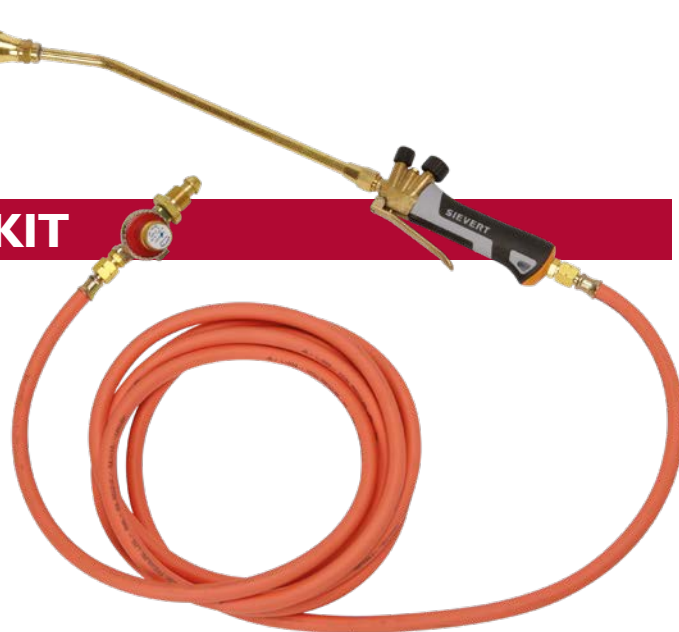
Our policy of continuous product improvement means that the style/colour or manufacturer of delivered product may differ from that illustrated.

# SIEVERT®

## SIEVERT TORCH COMPLETE KIT

A professional and powerful torch kit, ideal for soft soldering, brazing, melting, metalworks, paintstripping and other heating jobs. Includes 5m hose and 0-4 bar regulator.

Code	Description
10661406	SIEVERT DETAIL TORCH COMPLETE KIT
10661407	SIEVERT MEDIUM TORCH COMPLETE KIT
10661408	SIEVERT LARGE TORCH COMPLETE KIT
10661409	SIEVERT DETAIL TORCH
10661410	SIEVERT MEDIUM TORCH
10661411	SIEVERT LARGE TORCH



### SIEVERT®



Code	Description
10660592	SIEVERT 180mm NECK TUBE

### SIEVERT®



Code	Description
10660593	SIEVERT 350mm NECK TUBE

### SIEVERT®



Code	Description
10660578	SIEVERT 42mm MEDIUM BURNER

### SIEVERT®



Code	Description
10660587	SIEVERT LARGE TORCH ECONOMY

### SIEVERT®



Code	Description
10660579	SIEVERT 60mm LARGE BURNER

### SIEVERT®



Code	Description
10660590	SIEVERT HANDLE C/W VALVE

Our policy of continuous product improvement means that the style/colour or manufacturer of delivered product may differ from that illustrated.

# SIEVERT®

## SIEVERT TORCH COMPLETE KIT ECONOMY

A professional and powerful torch kit, ideal for soft soldering, brazing, melting, metalworks, paintstripping and other heating jobs. Includes 5m hose and 0-4 bar regulator.

Please note these are factory assembled and parts are non-interchangeable.



Code	Description
10660584	SIEVERT SMALL TORCH ECONOMY
10660585	SIEVERT SMALL TORCH COMPLETE KIT ECONOMY
10660586	SIEVERT SMALL TORCH COMPLETE KIT ECONOMY WITH 10M HOSE
10660587	SIEVERT LARGE TORCH ECONOMY
10660588	SIEVERT LARGE TORCH COMPLETE KIT ECONOMY
10660589	SIEVERT LARGE TORCH COMPLETE KIT ECONOMY WITH 10M HOSE

## SIEVERT®



Code	Description
10660591	SIEVERT 500mm NECK TUBE



Code	Description
10660345	TORCH STAND



Code	Description
10661412	2 PRONG TORCH ADAPTOR



Code	Description
10661413	4 PRONG TORCH ADAPTOR

Our policy of continuous product improvement means that the style/colour or manufacturer of delivered product may differ from that illustrated.



Code	Description
10660346	0-4 BAR CROWN TOP REGULATOR



Code	Description
10660347	PROPANE FLASHBACK ARRESTOR



Code	Description
10660527	SEAM ROLLER



Code	Description
10661416	EXCESS FLOW VALVE



Code	Description
10660344	NUT AND TAIL



Code	Description
10660348	'T' MANIFOLD



Code	Description
10660343	HOSE CLIPS



Code	Description
10660349	PIGTAIL



Code	Description
10661415	9kg PRESSURE SEAM ROLLER



Code	Description
10660457	TORCH ON ROLLER BAR C/W WHEELS

Our policy of continuous product improvement means that the style/colour or manufacturer of delivered product may differ from that illustrated.

# GRUN



Code	Description
I0660606	GRU QUICK RELEASE HOSE CONNECTOR GRUN



Code	Description
I0661417	OXYTURBO BURNING TORCH COMPLETE KIT

FITS ON  
STANDARD  
GAS  
CARTRIDGE



Code	Description
I0660350	FLINT LIGHTER



Code	Description
I0660351	SPARE FLINTS PER 10



Code	Description
I0660343	HOSE REPAIR KIT



Code	Description
I0660641	TAYMAR BLOW LAMP
I0660642	TAYMAR REFILL



Code	Description
I0660565	STEEL SEAM ROLLER RADIUS EDGE



Code	Description
I0660566	28mm TEFLON SEAM ROLLER

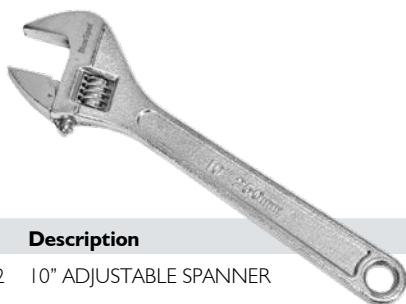


Code	Description
I0660563	SINGLE PLY SEAM TESTING PROBE



Code	Description
I0660562	SINGLE PLY PENNY ROLLER 5mm

Our policy of continuous product improvement means that the style/colour or manufacturer of delivered product may differ from that illustrated.



Code	Description
10660352	10" ADJUSTABLE SPANNER

WILL  
FIT ON  
EXTENDING  
POLE



Code	Description
10660563	SINGLE PLY SEAM TESTING PROBE



Code	Description
10660635	SILICONE RUBBER SEAM ROLLER 45MM



Code	Description
10661419	HOT AIR 40mm WELDING NOZZLE
10661420	HOT AIR 40mm ANGLED NOZZLE



Code	Description
10661425	REPLACEMENT ELEMENT



Code	Description
10660355	FULLY FORGED GAS SPANNER



Code	Description
10661421	NYLON VEE ROLLER



Code	Description
10661424	20mm 90deg ANGLE WELDING NOZZLE



Code	Description
10661422	HOT AIR 20mm WELDING NOZZLE
10661423	HOT AIR 20mm WELDING NOZZLE



Code	Description
10660564	10" MEMBRANE SHEARS
10661614	DECORATORS SCISSORS

Our policy of continuous product improvement means that the style/colour or manufacturer of delivered product may differ from that illustrated.

**LEISTER**

## LEISTER TRIAC 'AT' HOT AIR GUN

The TRIAC AT is an intelligent hot-air hand tool for welding and shrinking plastics that is suitable for on-site use. It is designed for the needs of even the most demanding professional. Every tool undergoes stringent quality checks prior to leaving the factory in Switzerland. This high-quality hot-air hand tool is equipped for all situations. Its universal areas of application are virtually unlimited. The TRIAC AT will continue to prove its merit in any weather condition and is just as effective outside as it is indoors – all during continuous operation.

### Key Features

- Suitable for the work site.
- Closed loop controlled temperature.
- Open loop controlled air volume.
- Intelligent «e-Drive» operating unit.
- Ergonomic handling.
- Modern design.
- Swiss made.



Code	Description
10661426	LEISTER TRIAC 'AT' HOT AIR GUN

Our policy of continuous product improvement means that the style/colour or manufacturer of delivered product may differ from that illustrated.

# FIBREGLASS ROOFING SUPPLIES

## GRP STARTER KIT

**GREAT  
VALUE  
PACK**

**Kit includes:**

Short handle 4" roller frame  
x10 roller refills  
x6 wooden laminating brush  
6" consolidated roller  
12" paint skuttle  
Suretouch latex gloves 100 per box  
x3 9" GRP application roller C/W frame



Code	Description
I0661374	GRP STARTER KIT

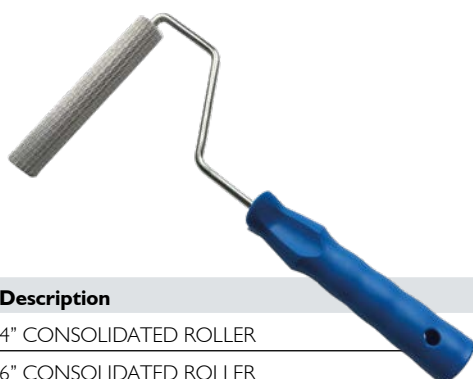
Our policy of continuous product improvement means that the style/colour or manufacturer of delivered product may differ from that illustrated.



Code	Description
I0660391	SHORT HANDLE 4" ROLLER FRAME
I0660255	4" REFILL
I0661612	4" REFILL (VELOUR)



Code	Description
I0660393	LONG HANDLE 4" ROLLER FRAME
I0660255	4" REFILL



Code	Description
I0660398	4" CONSOLIDATED ROLLER
I0660399	6" CONSOLIDATED ROLLER
I0660400	9" CONSOLIDATED ROLLER



Code	Description
I0660395	4" 'SPASH FREE' CONSOLIDATED ROLLER
I0660396	6" 'SPASH FREE' CONSOLIDATED ROLLER
I0660397	9" 'SPASH FREE' CONSOLIDATED ROLLER



Code	Description
I0660401	3" GRP APPLICATION ROLLER C/W FRAME
I0660402	6" GRP APPLICATION ROLLER C/W FRAME
I0661375	9" GRP APPLICATION ROLLER C/W FRAME



Code	Description
I0660403	10" STRONG ARM FRAME FOR GRP
I0660405	10" GRP SLEEVE STRONG ARM
I0660404	10" STRONG ARM FRAME AND SLEEVE
I0660405	10" GRP SLEEVE (VELOUR) FOR STRONG ARM



Code	Description
I0660293	SURETOUCH LATEX GLOVES 100 PER BOX



Code	Description
I0660357	2" LAMINATING BRUSH
I0660358	3" LAMINATING BRUSH
I0660359	4" LAMINATING BRUSH

Our policy of continuous product improvement means that the style/colour or manufacturer of delivered product may differ from that illustrated.



Code	Description
10661620	3 PIECE WOODEN MIXER



Code	Description
10660383	12" PAINT SKUTTLE



Code	Description
10661376	GRP MASKING TAPE



Code	Description
10660424	CUP RESPIRATOR (DUST MASK) PER 5



Code	Description
10660407	POWER WHISK



Code	Description
10661377	GRP MINI SKUTTLE



Code	Description
10660406	GRP DUCT TAPE



Code	Description
10660425	MULTI PURPOSE VALVED MASK (FFP3) - PACK OF 3

Our policy of continuous product improvement means that the style/colour or manufacturer of delivered product may differ from that illustrated.

## ROOF DRAIN 'FIBREGLASS'

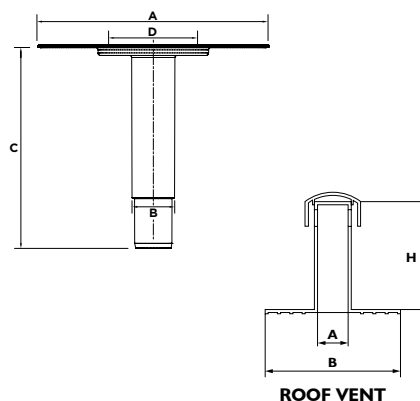
eterno|vica

Available in five diameters: 50-75-82-90-100mm. The Liquid vertical exit drain with fibreglass mesh is provided of certified fibreglass mesh, that allows compatibility especially with water base liquid waterproofing materials. The PP flange is provided of knurled surface on both sides, to improve the adherence of liquid waterproofing materials. Small steps on the upper part of the spigot allow dripping of water coming from any upper infiltration.



### LIQUID STRAIGHT WITH FIBREGLASS MESH

Code	Type	for pipes Ø	A	B	C	D
10661527	1 STRAIGHT WITH FIBREGLASS MESH	50	230	42,3	200	42,3
10661528	1 STRAIGHT WITH FIBREGLASS MESH	75	230	70,3	200	66,0
10661529	1 STRAIGHT WITH FIBREGLASS MESH	82	230	76,1	200	71,8
10661530	1 STRAIGHT WITH FIBREGLASS MESH	90	230	84,8	200	80,5
10661531	1 STRAIGHT WITH FIBREGLASS MESH	100	230	94,1	200	89,8
10661615	2 ROOF VENT	100	230	94,1	200	89,8



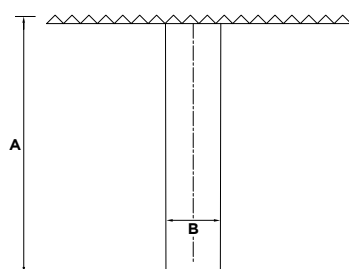
## FIBREGLASS PARAPET ROOF DRAIN

eterno|vica

Manufactured from seamless GRP tube with chopped strand 900 weight matting bonded to create bonding surface with the roof membrane.

Please note the membrane must be dressed on to the internal diameter of the drain and consolidated into position to ensure 100% bond.

Code	A	B
10661532	500	82
10661533	500	110



Our policy of continuous product improvement means that the style/colour or manufacturer of delivered product may differ from that illustrated.



Code	Description
10660275	CLAW HAMMER STEEL SHAFT



Code	Description
10660277	CLAW HAMMER FULLY FORGED



Code	Description
10660286	ESTWING CLAW HAMMER 16oz BLUE
10660289	ESTWING CLAW HAMMER 20oz BLUE GRIP
10661428	ESTWING CLAW HAMMER 24oz BLUE GRIP



Code	Description
10660291	ESTWING SLATERS PICK



LEATHER  
GRIP

Code	Description
10660287	ESTWING CLAW HAMMER 16OZ LEATHER GRIP
10660288	ESTWING CLAW HAMMER 20OZ LEATHER GRIP



Code	Description
10660278	CLUB HAMMER 2.5LB



Code	Description
10660299	HEAD (PICK C+P)



Code	Description
10272786	3" BOLSTER CHISEL
10660468	4" BOLSTER CHISEL



Code	Description
10660300	HEAD (MATTOCK)



Code	Description
10660301	SHAFT FOR PICK/MATTOCK

Our policy of continuous product improvement means that the style/colour or manufacturer of delivered product may differ from that illustrated.

Code	Description
I0660470	18" WRECKING BAR
I0660471	24" WRECKING BAR
I0660472	24" WRECKING BAR



Code	Description
I0660504	COTTON BRICK LINE



Code	Description
I0660506	MAXI LINE



Code	Description
I0661430	EDMA HAMMER TACKER (10/12/14mm STAPLES)



Code	Description
I0660302	ARROW HT50P HEAVY DUTY HAMMER TACKER



Code	Description
I0661431	10mm ECO STAPLES PER 1000 PLUS 40
I0661432	12mm ECO STAPLE PER 1000 PLUS 40



Code	Description
I0660469	PLUGGING CHISEL



Code	Description
I0660505	LONGO CHALK LINE (30M)



Code	Description
I0660508	MAXI LINE CHALK FLASK - BLUE
I0660509	MAXI LINE CHALK FLASK - RED
I0660510	MAXI LINE CHALK FLASK - WHITE
I0661429	FLUORESCENT ORANGE CHALK FLASK



Code	Description
I0660305	10mm TACWISE STAPLES PER 2000
I0660304	12mm TACWISE STAPLES PER 2000



Code	Description
I0660307	ARROW HT55 HAMMER TACKER



Code	Description
I0661433	5M FISCO TAPE MEASURE



Our policy of continuous product improvement means that the style/colour or manufacturer of delivered product may differ from that illustrated.



Code	Description
10660462	7.5M ROOFER TAPE



Code	Description
10660459	5M ROOFER TAPE MEASURE HI-VIS



Code	Description
10660461	ROTATING VIAL ANGLE FINDER



Code	Description
10660460	1M FOLDING RULE PLASTIC



Code	Description
10660507	ROOFER MARKING PENCIL (PACK OF 3)



Code	Description
10660458	24" SPIRIT LEVEL



Code	Description
10660260	FLAT SCREWDRIVER



Code	Description
10661434	CROSSPOINT SCREWDRIVER



Code	Description
10660390	GAUGING TROWEL ECONOMY



Code	Description
10661435	RST TILING TROWEL

Our policy of continuous product improvement means that the style/colour or manufacturer of delivered product may differ from that illustrated.



Code	Description
I0660409	MASTIC TROWEL



Code	Description
I0661619	BRICK TROWEL ECONOMY



Code	Description
I0660411	ASPHALT POT TROWEL



Code	Description
I0660375	TYZACK GAUGING TROWEL



Code	Description
I0661436	ASPHALT MARGIN TROWEL



Code	Description
I0660380	POINTING TROWEL ECONOMY



Code	Description
I0660410	TYZACK ASPHALT TROWEL



Code	Description
I0660521	3" PRO SCRAPER STANDARD
I0660522	4" PRO SCRAPER STANDARD



Code	Description
I0660515	R/B TRIMMING KNIFE – ROOFER



Code	Description
I0660519	FOLDING KNIFE

Our policy of continuous product improvement means that the style/colour or manufacturer of delivered product may differ from that illustrated.



Code	Description
10660514	F.B. TRIMMING KNIFE STANLEY



Code	Description
10660516	TRIMMING KNIFE RETRACTABLE BLADE STANLEY



Code	Description
10660523	STANLEY FATMAX FOLDING TWIN-BLADE KNIFE

FOLDS INTO  
COMPACT  
SIZE FOR  
CONVENIENT  
STORAGE



Code	Description
10661438	REC FISH TAIL TRIM KNIFE



Code	Description
10661437	STANLEY TITAN KNIFE



Code	Description
10660517	STRAIGHT BLADES PER DISP 10
10661439	STANLEY STRAIGHT BLADES - PER 5

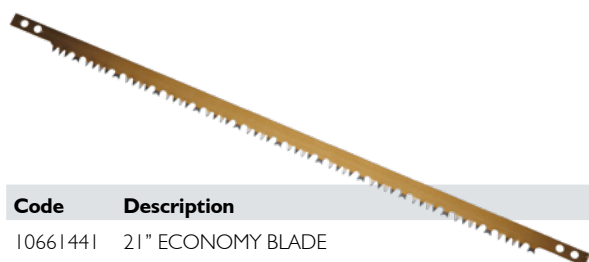


Code	Description
10660518	HOOK BLADES PER DISP 10
10661440	STANLEY HOOKED BLADES - PER 5

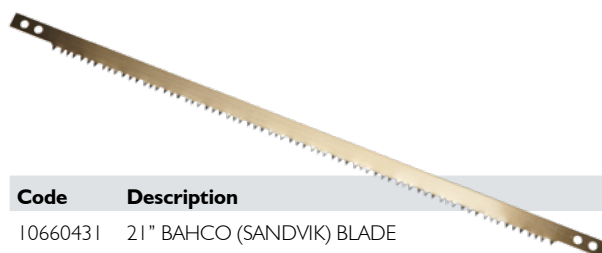


SET CUTTING  
DEPTH  
PRECISION  
FOR CUTTING  
EDGES

Code	Description
10661442	PRECISION ROOFING KNIFE
10661443	BOW TIE BLADES - PER 5



Code	Description
10661441	21" ECONOMY BLADE



Code	Description
10660431	21" BAHCO (SANDVIK) BLADE

Our policy of continuous product improvement means that the style/colour or manufacturer of delivered product may differ from that illustrated.



Code	Description
I0660432	21" BAHCO (SANDVIK) BOWSAW



Code	Description
I0660438	21" ROOFERS BOWSAW



Code	Description
I0660439	20" HARDPOINT ROOFERS SAW



Code	Description
I0660434	JACKSAW - PROFESSIONAL HARDPOINT SAW



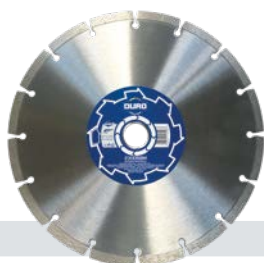
Code	Description
I0660435	S&J PREDATOR HAND SAW



Code	Description
I0660436	S&J 22" PREDATOR HAND SAW FOR UPVC AND FACIA



Code	Description
I0660437	S&J 22" PREDATOR HAND SAW TRIPLE CUT



Code	Description
I0660290	4.5" DIAMOND CUTTING DISC
I0660418	9" DIAMOND CUTTING DISC
I0660429	12" DIAMOND CUTTING DISC
I0660416	4.5" MORTAR RAKING PREMIUM BLADE



Code	Description
I0660415	FLAT METAL CUTTING DISC 115mm x 22mm
I0660413	FLAT METAL CUTTING DISC 230mm x 22mm
I0660414	FLAT STONE CUTTING DISC 115mm x 22mm
I0660412	FLAT STONE CUTTING DISC 230mm x 22mm

Our policy of continuous product improvement means that the style/colour or manufacturer of delivered product may differ from that illustrated.



Code	Description
10660630	SDS PLUS HAMMER DRILL 6mm x 210mm
10660632	SDS PLUS HAMMER DRILL 6.5mm x 210mm
10660631	SDS PLUS HAMMER DRILL 7mm x 210mm



Code	Description
10660643	TORX FORGEFIX S2T20



Code	Description
10661280	RAWL PLUG RED 6mm



Code	Description
10660256	2 STROKE OIL



Code	Description
10660258	EDMA FLYER AVIATION SNIPS



Code	Description
10660463	10" TINSNIPS



Code	Description
10660464	8" GILBOW TINSNIP
10660465	10" GILBOW TINSNIP
10660466	12" GILBOW TINSNIP



Code	Description
10661379	LEFT H.GILBOW G67 TINSNIP
10661380	RIGHT H.GILBOW G69 TINSNIP

Our policy of continuous product improvement means that the style/colour or manufacturer of delivered product may differ from that illustrated.



Code	Description
I0661445	STRAPPING CLIPS PER BOX



Code	Description
I0661446	SEAL APPLY TOOL



Code	Description
I0661447	TENSION TOOL



Code	Description
I0661448	STRAPPING PER 1500m



Code	Description
I0660600	PALLET WRAP



Code	Description
I0661449	STRAPPING DISP STAND



Code	Description
I0661450	HEAVY DUTY BLACK PALLET WRAP



Code	Description
I0661451	ADHESIVE TAPE



Code	Description
I0660406	DUCT TAPE



Code	Description
I0661376	GRP MASKING TAPE

Our policy of continuous product improvement means that the style/colour or manufacturer of delivered product may differ from that illustrated.

GRÜN

## GRÜN BITUMEN BOILER WITH TAP & INSULATION



**WE ALSO MAKE A  
FULL RANGE OF ASPHALT  
EQUIPMENT PLEASE CALL  
01480 466 777**

Propane bitumen boilers are the product of years of experience in the manufacture of bitumen boilers. The construction and fitting of the equipment represents the latest technology; the robust design takes into consideration the rigours of building sites; the heating system – without internal heating tubes – guarantees, because of the large heating areas, a high melting capacity using only small amounts of gas.

Economic viability is achieved both by a high degree of firing efficiency and by double casing insulation. Both the energy-saving heating technique and the cleanliness of combustion have been confirmed by a State approved testing institution in W. Germany.

GRÜN bitumen boilers are designed on the basis of a modular construction system and can easily be reduced to the main component parts without any tools, as a result of which exchanges of parts within boilers of the same size can be made without any problems, this often solves transportation difficulties.

The construction is rigid and wholly suitable for building site use, the steelplate is strong and of excellent quality thus extending the life of the equipment – a wind-shielded vortex beam and row burners ensure a uniform spread of heat on to the boiler base.

The standard model includes hand-operated burners. The absence of heating tubes prevents cleaning problems.

Equipment of 30 litres capacity or above can be fitted with a dial thermometer if required; equipment with more than 50 litres effective contents can be designed, on request, for thermostatic regulation of the burner by an automatic control, the design of which is based on tried and tested component parts. The control is effected via an adjustable valve which regulates the gas discharge rate.

Code	Description
10661453	30 GALLON
10661454	50 GALLON

Our policy of continuous product improvement means that the style/colour or manufacturer of delivered product may differ from that illustrated.

# GRÜN

## GRÜN THERMOST CONTROL UNIT (ONLY 30/50 GALLON)

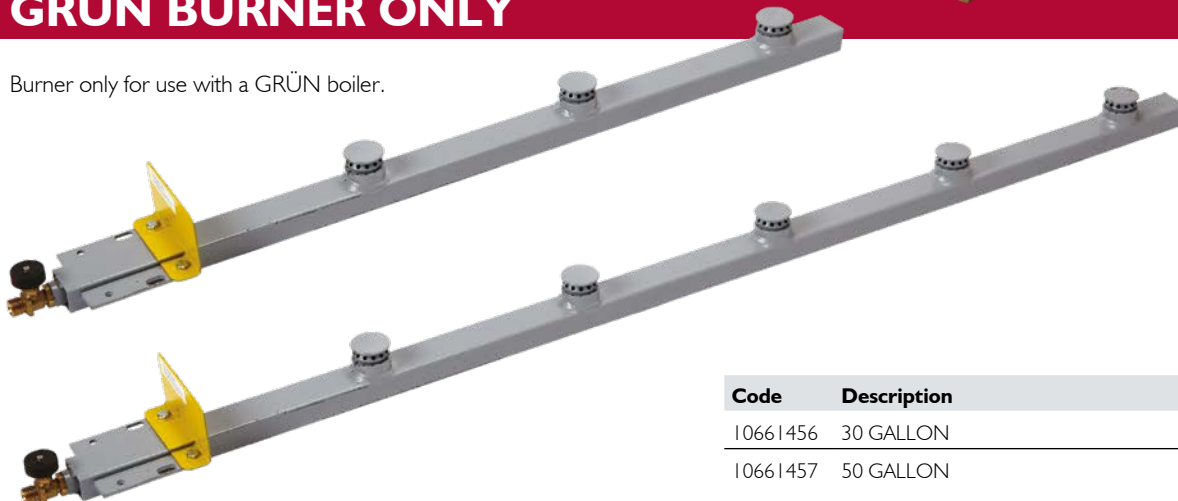
Automatic thermostatic control that is durable and does not require batteries or mains supply.

Code	Description
10661455	THERMOST CONTROL UNIT



## GRÜN BURNER ONLY

Burner only for use with a GRÜN boiler.



Code	Description
10661456	30 GALLON
10661457	50 GALLON

## BITUMEN TEMPERATURE PROBE

Used for taking the temperature of the bitumen in the pot – simple to use and read.

Code	Description
10661458	BITUMEN TEMPERATURE PROBE



Our policy of continuous product improvement means that the style/colour or manufacturer of delivered product may differ from that illustrated.

## BITUMEN BOILER WITH TAP

Complete boiler; inner, outer, lid and tap opening.  
Makes getting tar out of the boiler easier and faster,  
without the need for ladles.

Code	Description
10660448	15 GALLON WITH TAP
10660447	15 GALLON WITH TAP AND ACCESSORIES
10660452	25 GALLON WITH TAP
10660455	IMPACT BOILER BURNER



## BITUMEN BOILER

British made 10-25 gallon boiler including inner, outer  
and lid.

Code	Description
10660443	10 GALLON
10660444	10 GALLON WITH ACCESSORIES
10660445	15 GALLON
10660446	15 GALLON WITH ACCESSORIES
10660450	25 GALLON
10660451	25 GALLON WITH ACCESSORIES
10660455	IMPACT BOILER BURNER



## OVERSPILL TRAY

British made overspill tray.

Code	Description
10660453	STANDARD OVERSPILL TRAY
10660454	LARGE OVERSPILL TRAY



Our policy of continuous product improvement means that the style/colour or manufacturer of delivered product may differ from that illustrated.

## BUCKET HEATER

Unit to house an asphalt bucket for small jobs.

Code	Description
I0660442	ASPHALT BUCKET HEATER
I0660456	SMALL IMPACT BOILER BURNER



Code	Description
I0661459	IMPACT BOILER BURNER JET UNIT



Code	Description
I0660328	V-LIP COMPUND BUCKET & LID



Code	Description
I0660549	1kg FIRE EXTINGUISHER P/DER
I0660548	2kg FIRE EXTINGUISHER P/DER



Code	Description
I0661460	GAS CAGE (4ft x 4ft x 6ft) NO BASE

Our policy of continuous product improvement means that the style/colour or manufacturer of delivered product may differ from that illustrated.



Code	Description
10660376	NO 12 COTTON MOP



Code	Description
10660377	NO 14 COTTON MOP



Code	Description
10661461	10" BASSINE BRUSH HEAD



Code	Description
10660360	10" COCO BRUSH HEAD



Code	Description
10660366	18" BASSINE BRUSH C/W HANDLE
10660364	24" BASSINE BRUSH C/W HANDLE



Code	Description
10660361	12" COCO BRUSH C/W HANDLE
10660362	18" COCO BRUSH C/W HANDLE
10660363	24" COCO BRUSH C/W HANDLE



Code	Description
10661463	36" BASSINE BRUSH C/W HANDLE



Code	Description
10661462	36" COCO BRUSH C/W HANDLE



Code	Description
10660365	BASS YARD BRUSH HEAD



Code	Description
10660387	COCO HAND BRUSH
10661611	BASSINE HAND BRUSH

Our policy of continuous product improvement means that the style/colour or manufacturer of delivered product may differ from that illustrated.



Code	Description
I0660378	9" 2-ARM ROLLER FRAME
I0660379	12" 2-ARM ROLLER FRAME
I0660381	9" ROLLER REFILL
I0660382	12" ROLLER REFILL



Code	Description
I0660369	10" HOT MELT SQUEEGEE
I0661464	22" HOT MELT SQUEEGEE



Code	Description
I0660386	4 ROW WIRE BRUSH



Code	Description
I0660367	TURKS HEAD BRUSH



Code	Description
I0273130	9" PAINT ROLLER & TRAY SET



Code	Description
I0660384	9" PAINT ROLLER C/W FRAME



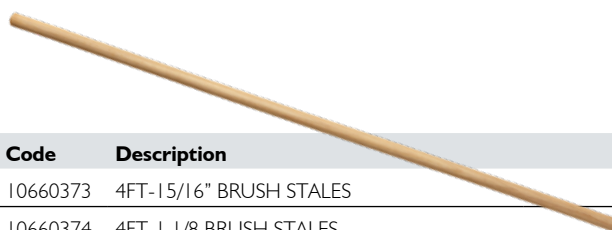
Code	Description
I0660372	18" WATER DOZER



Code	Description
I0661465	PAINTBRUSH 1"
I0660252	PAINTBRUSH 2"
I0660253	PAINTBRUSH 3"
I0660254	PAINTBRUSH 4"



Code	Description
I0660370	18" SQUEEGEE C/W HANDLE
I0660371	24" SQUEEGEE C/W HANDLE



Code	Description
I0660373	4FT-15/16" BRUSH STALES
I0660374	4FT-1 1/8 BRUSH STALES

Our policy of continuous product improvement means that the style/colour or manufacturer of delivered product may differ from that illustrated.



Code	Description
10661741	ROLLER FRAME FLEECE SLEEVE 230mm



Code	Description
10661740	ROLLER FRAME 230 x 45mm



Code	Description
10660388	DUST PAN & BRUSH



Code	Description
10660356	GORILLA BROOM 500mm C/W SCREW HANDLE AND BUILT IN SCRAPER



Code	Description
10661612	4" VELOUR TOPCOAT ROLLER REFILL
10660405	10" GRP SLEEVE (VELOUR) FOR STRONG ARM



Code	Description
10660394	4" MINI ROLLER & TRAY KIT



Code	Description
10660636	JUMBO SPONGE



Code	Description
10660603	METAL POLE FOR SANDER 1200mm



Code	Description
10660624	DECORATORS ROLLS 115mm x 5M 60 GRIT
10660625	DECORATORS ROLLS 115mm x 5M 80 GRIT
10660623	DECORATORS ROLLS 115mm x 5M 120 GRIT

Our policy of continuous product improvement means that the style/colour or manufacturer of delivered product may differ from that illustrated.

## ROOFER RIDGE BUCKET

Designed for roofers, this hard-wearing and durable ridge bucket comes with a host of convenient features. The rigid 'V' shaped base to the bucket allows the bucket to sit on the roof ridge without risk of spillage. The heavy duty plastic and metal handle ensures that fully laden buckets are comfortably and safely transported around the roof without accident. A strong hook moulded into the rim of the bucket allows the user to hook the ridge bucket over batten and ladder rungs.



Code	Description
I0660329	ROOFER RIDGE BUCKET



Code	Description
I0660325	FLEXITUB - 40L
I0662697	FLEXITUB - 40L 2PK OFFER



Code	Description
I0660251	PLASTIC BUCKET



Code	Description
I0660331	YELLOW BUCKET

REAL  
RUBBER



Code	Description
I0660326	RUBBER 4 HAND TRUG

Our policy of continuous product improvement means that the style/colour or manufacturer of delivered product may differ from that illustrated.

HEAVY DUTY  
SINGLE SPUN  
BUCKET BODY



Code	Description
10660324	ASPHALT BUCKET



Code	Description
10660330	REAL UNBREAKABLE BUCKET



Code	Description
10660383	12" PAINT SKUTTLE



Code	Description
10661377	GRP MINI SKUTTLE



Code	Description
10660321	POURING CAN LARGE SPOUT



Code	Description
10660320	GALVANISED V LIP BUCKET



Code	Description
10661466	SNOW SHOVEL C/W HANDLE



Code	Description
10660407	POWER WHISK

Our policy of continuous product improvement means that the style/colour or manufacturer of delivered product may differ from that illustrated.



Code	Description
10660328	V LIP COMPOUND BUCKET + LID (BUCKET COMES IN RAW FINISH)



Code	Description
10660323	SMALL TAR LADLE
10661467	LARGE TAR LADLE



Code	Description
10661468	PNE WHEELBARROW



Code	Description
10661469	SACK TRUCK



Code	Description
10660335	HEAVY DUTY BRUTE SCRAPER



Code	Description
10661470	300mm SCRAPER INC HANDLE



Code	Description
10660327	TUFSPOT MIXING TRAY



Code	Description
10660332	BULLDOG STEEL SHOVEL



Code	Description
10660333	ROOFER SHOVEL OPEN SOCKET GENERAL PURPOSE



Code	Description
10660334	CARTER ALL STEEL STRIPPING SPADE

Our policy of continuous product improvement means that the style/colour or manufacturer of delivered product may differ from that illustrated.



Code	Description
10660620	HEAVY DUTY REFUSE SACKS PER 100



Code	Description
10660426	5.4M x 3.6M TARPAULIN PLASTIC
10660429	5.5M x 7.0M TARPAULIN PLASTIC



Code	Description
10660634	COTTON DUST SHEET 2.7M x 3.6M



Code	Description
10660637	STOCKINETTE (400g)



Code	Description
10660621	1 TONNE BAG



Code	Description
10660607	25mm x 4.5M RATCHET



Code	Description
10660608	2" RATCHET LORRY TIE DOWN



Code	Description
10661617	SMALL TIE DOWN STRAPS



Code	Description
10660540	300mm x 4.8mm CABLE TIES (BULK) BLACK



Code	Description
10660533	48" BUNGEE STRAP WITH HOOK

Our policy of continuous product improvement means that the style/colour or manufacturer of delivered product may differ from that illustrated.

## LADDER MAT



Code	Description
10661477	LADDER MAT



Code	Description
10660597	LADDER CLAMP



Code	Description
10660501	LADDER ROOF HOOK



Code	Description
10660614	CABLE REEL 3-WAY 13AMP 25M



Code	Description
10660622	RHINO SAFECLAMP

Our policy of continuous product improvement means that the style/colour or manufacturer of delivered product may differ from that illustrated.



Code	Description
I0660546	MOSS & MOULD REMOVER 5L



Code	Description
I0060547	MORTAR ADMIXTURE 5L



Code	Description
I0660561	FROST PROOFER & ACCELERATOR



Code	Description
I0660543	BLACK MORTAR TONE - 1kg
I0660544	BROWN MORTAR TONE - 1kg
I0660545	RED MORTAR TONE - 1kg



Code	Description
I0661471	ZEBRA TAPE



Code	Description
I0660427	LORRY ROPE 90FT APPROX 10mm DIA



Code	Description
I0661472	10mm COIL ROPE 220m LONG
I0661473	6mm COIL ROPE 220m LONG



Code	Description
I0660428	LORRY ROPE 90FT APPROX 6mm DIA

Code	Description
I0661474	4" 500 GAUGE LAYFLAT TUBING FOR TEMPORARY DOWNPIPE (4 KILO ROLL)
I0661475	5" 500 GAUGE LAYFLAT TUBING FOR TEMPORARY DOWNPIPE (5 KILO ROLL)
I0661476	6" 500 GAUGE LAYFLAT TUBING FOR TEMPORARY DOWNPIPE (6 KILO ROLL)



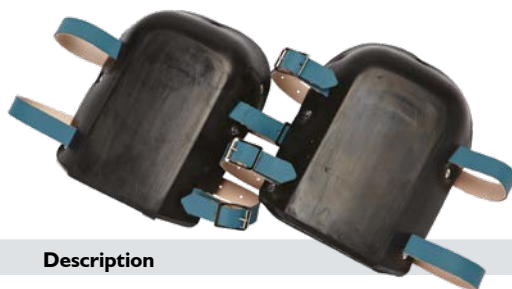
USE WITH  
JUBILEE  
MULTIBAND  
SEE PAGE 17



Our policy of continuous product improvement means that the style/colour or manufacturer of delivered product may differ from that illustrated.



Code	Description
I0660311	ROOFER KNEEPAD L/R



Code	Description
I0660314	MINERS KNEEPADS



Code	Description
I0661478	ROOFER KNEEPAD RUBBER/RUBBER



Code	Description
I0660316	ROOFER ASPHALTER KNEEPAD



Code	Description
I0660310	VITREX MINI GEL



Code	Description
I0660312	LEATHER BELT



Code	Description
I0660308	KNEEPAD SPARE STRAP



Code	Description
I0660309	LEATHER QUALITY SPARE KNEEPAD STRAP – EACH



Code	Description
I0660313	HAMMER LOOP STEEL



Code	Description
I0661479	24" TOOLBAG

Our policy of continuous product improvement means that the style/colour or manufacturer of delivered product may differ from that illustrated.



Code	Description
10660319	CORDURA POUCH F+F



Code	Description
10660318	CORDURA POUCH D/COMB



Code	Description
10661613	LEATHER NAIL & TOOL POUCH



Code	Description
10660315	LEATHER NAIL POCKET D/COMB STANDARD



Code	Description
10661480	ROOFER NAIL POUCH - KANGAROO



Code	Description
10660293	SURETOUCH LATEX GLOVES 100 PER BOX



Code	Description
10660294	PVC KNITTED WRIST GLOVES RED



Code	Description
10660296	GRIPPER GLOVES OPEN BACK



Code	Description
10660297	THERMAL GRIPPER GLOVE - HIGH VIS



Code	Description
10660298	ROOFER SKIN GLOVES

Our policy of continuous product improvement means that the style/colour or manufacturer of delivered product may differ from that illustrated.


**Code      Description**

I0660424    CUP RESPIRATOR (DUST MASK) PER 5


**Code      Description**

I0660425    MULTI PURPOSE VALVED MASK (FFP3) - PACK OF 3


**Code      Description**

I0660560    FLO HIGH GLOW WAIST COAT (XL)


**Code      Description**

I0661481    PVC RAINSUIT


**Code      Description**

I0660420    GP GOGGLES


**Code      Description**

I0660422    SAFETY GLASSES (EN166)


**Code      Description**

I0660421    EAR DEFENDER


**Code      Description**

I0660423    SAFETY HELMET BLUE EN397


**Code      Description**

I0660639    DISPOSABLE OVERALL XL


**Code      Description**

I0660645    100 WIPES PER TUB

Our policy of continuous product improvement means that the style/colour or manufacturer of delivered product may differ from that illustrated.



SIG Roofing, Harding Way, St Ives,  
Cambridgeshire PE27 3YJ  
Tel: 01480 466777  
Email: [info@sigroofing.co.uk](mailto:info@sigroofing.co.uk)  
Websites: [www.sigroofing.co.uk](http://www.sigroofing.co.uk)

This brochure has been produced by the Marketing Department for SIG Roofing. All rights reserved.  
No copying by any means is permitted, except when permission is given in writing by SIG Roofing.

This brochure contains manufacturers' product information that is reproduced by SIG Roofing in good faith, based on the latest knowledge available at the time of going to print. Whilst every effort has been made to ensure that the information is current and correct, as distributors SIG Roofing cannot accept responsibility for the application and specification data featured. Neither can we accept responsibility where the manufacturers' instructions have not been followed. We reserve the right to amend, withdraw or substitute these products at any time. Visuals are for illustration purposes only, please go to manufacturers websites for technical specifications.