

# INSIGHT

SERVING THE ROOFING INDUSTRY

FROM **SIG** ROOFING



**Our online home** Get a deeper insight into all things roofing at [www.sigroofing.co.uk/info-hub](http://www.sigroofing.co.uk/info-hub)

## Issue: Five

Welcome to INSIGHT. In this edition you can read all about Contractor's Day, the new one-day exhibition for roofing and cladding contractors. There's also the low-down on how Klober are helping roofers stay ahead of the game with their FREE industry-leading training courses.

In addition, discover how to save time and money all year round with the Superframe Gas Nailer, plus see how Danelaw's Fast Flash® came to the rescue at Plymouth Ferry Port. There's also the latest on how EU General Data Protection Regulations (GDPR) affect you, plus details of upcoming SIG Roofing open days and our latest Local Hero, John Davis.

[www.sigroofing.co.uk/info-hub](http://www.sigroofing.co.uk/info-hub)

## Highlights in this issue:

### **PRODUCTS CENTRAL**

- To fix ALL Problems, all you need is Soudal's Fix ALL!
- Reduce natural slate fixing times by 30% with Young Black's Slate Hook Tool
- Wienerberger's new tile and eaves clips make your life easier
- Spotting and treating cut edge corrosion advice from SIG Industrial Roofing Centre

### **ON THE CASE**

- Rockwool helps minimise station noise & increases fire safety at Farringdon's new Elizabeth Line station

- 'Our Lady' shines brightly again, thanks to SIG Design Technology
- Russell Roof Tiles helps an abandoned hospital get new lease of life

### **GETTING LEGAL**

- GDPR - It's personal

### **GETTING TECHNICAL**

- SIG UK Exteriors introduces new Managing Director
- Roof rescuer John Davis named 'Local Hero'
- Upcoming SIG Roofing open days & branch refurbishments

## Apprentices of the year 2018

Jay Webster and Kieran Forster have been crowned the Redland and Icopal Apprentices of the Year 2018. The two talented

winners held off their rivals as the BMI-backed competition culminated in two days of intense scrutiny from a panel of industry-leading figures.

At a special gala dinner the victors each received a £1,000 cash prize to invest in their future, a handsome trophy for the mantelpiece

plus a goody bag of high-quality roofing tools and materials. As winners they are also entitled to support from the two industry brand leaders at BMI's National Training Centre in South Cerney, Gloucestershire.



## Test your roofing knowledge at Contractor's Day!



Roofers often like a challenge, so if you fancy testing your roofing skills

and showing off your knowledge, now's your chance.

Contractor's Day is the new one-day exhibition for roofing and cladding contractors from the NFRC and Total Contractor magazine. Visit and you can test your roofing skills at the BMI Skills Zone on the Icopal flat roofing and Redland pitched roofing rigs. BMI are setting the rigs with a number of intentional defects - all you have to do is show

off your roofing expertise by pointing them out.

Contractor's Day takes place at Twickenham Stadium on 30th November 2018. Register now for your free ticket: [www.contractorsday.co.uk](http://www.contractorsday.co.uk)



## Train to gain

In a fast-paced industry such as roofing, keeping up-to-date with the latest developments is really important. One easy way you can stay ahead of the game and find out about the latest Standards, expand your knowledge of roof ventilation theory and get practical experience fitting products is on Klobber's industry leading training courses.

The courses are completely free and help you gain essential skills and expertise in a number of key areas, including:

- Condensation
- Ventilation
- Dry-fix roofing
- Battens and interlocking tiles on gable roofs
- Universal roof vents
- Eaves ventilation
- Underlays and practical fixing



You can find out more about the course content and dates at: [www.klobber.co.uk/page/training-and-events](http://www.klobber.co.uk/page/training-and-events)



## Marley Eternit launches new Slate Grey Clay Interlocking pantile

If you're looking for that classic traditional slate colour with modern sleek aesthetics, then you're in luck. Marley Eternit has added a new Slate Grey colour to its popular Melodie Clay Interlocking pantiles. The range combines a contemporary look with a traditional profile and an easy-to-lay flexible gauge for a high-coverage rate. Ideal for extension or refurbishment

projects and with a minimum pitch of just 12.5° the range gives you more choice when you're creating low pitch roofs.

For a complete, colour-matched slate grey finish, Slate Grey Cloak Verge units and Matt Black Clay Interlocking ridge and hip units are now also available.

For more information, visit: [www.marleyeternit.co.uk/slategrey](http://www.marleyeternit.co.uk/slategrey)



 **MarleyEternit**

## Reduce fatigue and speed up installation with the Superframe Gas Nailer

We all know how tiring and time consuming hammering in nails manually can be, particularly if you're working on a big project. Fortunately, products such as the Superframe Gas Nailer GS690/CH mean you can save time and energy all year round.

The Superframe Gas Nailer GS690/CH is a lightweight and well balanced gas powered tool that fires 50mm to 90mm nails. It's suitable for nailing roof battens and timber frame assembly and is backed with a 12-month warranty.

Highly durable, the nailer performs under extreme cold weather conditions of -10°. It has a magazine



capacity of 2 strips (40 nails per strip), and fires up to 1,100 shots per nail fuel canister, minimising gun loading times.

Compatible with TIL-R nail fuel packs for high performance nails and fuel canisters with a 15-year warranty. Available from SIG Roofing branches.

## Reduce natural slate fixing times by 30% with the Slate Hook Tool

You can now fix natural slate up to 30% faster and save on labour and scaffolding costs. The Slate Hook Tool from Young Black Industrial Stapling Ltd is the only tool available in the UK which helps you do this.

A fully collated air-powered system uses a compressor to give you improved loading and zero wastage. As you don't need refills to run the system, it provides an exceptionally

cost-effective solution, particularly if you install high volumes of slate.

Ergonomically designed for ease of use, the tool fires 100mm marine grade stainless steel hooks into the batten and has a magazine capacity of 50 hooks, which are available in black and green.

Ask for a demonstration at your local SIG Roofing branch.



**YOUNG  
BLACK**

**SIG** ROOFING



## To fix ALL problems, all you need is Fix ALL!



As if you needed another reason to tune in to TalkSport, the world's biggest sports radio station, is now working with Soudal on their first ever national radio campaign. Running throughout September, October and November the 12-week campaign will be heard over 14 million times and support Soudal's biggest ever Fix ALL triple pack promotion.

With no solvents, halogens, acids or isocyanates the Soudal Fix ALL range is safe for the environment and perfect for all interior and exterior bonding, filling and sealing jobs. You can even use it underwater!



## New tile and eaves clips hit the nail on the head to make your life easier!

Sometimes two hands just aren't enough, especially if you're fumbling about in your pockets for a nail and holding a clip at the same time. The new Monkey Grip tile and eaves clips from Wienerberger now provide a quicker and safer solution.

All you have to do is take the clip, hook it onto the interlock of the tile and hit the nail on the head. That's it.

The clips are designed so they hold themselves in place on the tile, meaning no more dropped clips. The nail is also part of the clip, so you don't need to rummage around in your pockets for them.

The nail also sits further away from the side of the interlock than traditional clips so they're easier to hammer, without sacrificing the integral strength of the clip.



## Spotting and treating cut edge corrosion



Knowing the tell-tale signs of cut edge corrosion can save you and your customers a lot of trouble. When the steel or aluminium sheets used in metal cladding are coated with a protective layer of plastic and cut to size in the factory, the cut edge isn't coated as part of the process, leaving the material prone to corrosion and coating failure.

Poor installation, clogged up gutters, substrate expansion and UV rays can all exacerbate the problem. Tell-tale signs to watch out

for are discolouration or when you can see cracks and blisters on a top layer.

Repairing cut edge corrosion will protect cladding from the elements and reduce the peel back of the coating. The SIG Industrial Roofing Centre can help you with a range of solutions including helping you tackle this often overlooked issue. Simply call 0870 264 7766 or email [industrial@sigroofing.co.uk](mailto:industrial@sigroofing.co.uk).



## Aluminium guttering is a safe option when working at height

The Work at Height Regulations 2005 were introduced to help minimise the risks roofers face. So, that means when you're up high, proper planning, organisation and risk assessment are the order of the day.

It means using appropriate work equipment such as scaffolding or raised platforms, allows for safe handling of materials more than 6ft in length. Complying with the rules is obviously a good way of mitigating risk, however

another way of improving on-site safety is to consider the materials you are using.

### Lighten the load

On heritage or listed buildings, stringent planning permissions usually mean a like-for-like replacement is favoured. However, materials like aluminium are very often an aesthetically acceptable alternative that can also help reduce accidents.

Aluminium is light, easy to handle and cut ends don't need painting to prevent rust. Also, using Alutec's Jurajoint technology, aluminium becomes

extremely easy to install, so you spend less time working at height, with all the risks that entails.

### Avoid maintenance

You can usually expect an aluminium gutter system to have a life expectancy closely matching the rest of the building, around 50 years. As a result, you don't need to put up access equipment to repaint, or replace the gutters halfway through the building's expected life.



## ON THE CASE

## Jutland slates provide a stunning finish to an attractive self-build design

Good quality and modern aesthetics combine perfectly in the fibre cement slate roof of a self-build residential property in the beautiful town of Chilton, Durham.

The property's modern style and character blends into the surrounding environment, with the installation of Cembrit Jutland fibre cement slates adding the perfect finishing touch. Built on a vacant plot, the property has five bedrooms and features a multi-pitched roof with rooflight windows and a dormer on the garage roof. With dark windows and a light brick face, the Jutland fibre cement slates needed to complement both shades.



Durham-based roofing contractor, Wilkinson Roofing installed approximately 3,000 600x300mm Cembrit Jutland fibre cement slates on the roof of the house and garage. Their aesthetic appeal and proven performance were key factors in the specification.

*"The complex roof layout presented us with a challenge in terms of installation," says Carl Wilkinson of Wilkinson Roofing. "We specified Cembrit Jutland slates after receiving a recommendation, and we are thrilled that we followed this advice, as the slates*

*have provided a stunning end result."*

Jutland slates feature a smooth surface and are pre-holed, square edged and lightweight.



## Volume control and fire safety at Farringdon's new Elizabeth Line station

When Transport for London's 'Elizabeth Line' opens later this year, Farringdon station will become one of the busiest in the UK. Thanks to its excellent acoustic performance and fire resistance, ROCKWOOL stone wool insulation was chosen to minimise station noise and increase fire safety.



The challenge for contractor, BFK, was to minimise sound propagation along the new platforms and tunnels to create a comfortable environment. At the same time they had to meet the strict fire safety requirements of London Underground Limited (LUL) while choosing products from the LUL approved products register.

ROCKWOOL RW3 Slabs 75mm thick were installed in the perforated glass fibre and reinforced concrete tunnel linings of the platform and access areas. As a semi-rigid product, the slabs were easily cut and friction fitted to form an acoustic lining behind the cladding.



ROCKWOOL RW3 slabs are CE Marked according to BS EN 13162:2012 and achieve a Euroclass A1 rating in accordance with BS EN 13501-1, meeting the requirements for non-combustible materials.

*"With a vast number of trains and people due to travel through this station,*

*noise reduction was a major factor for this scheme," says Simon Webber, BFK. "ROCKWOOL was able to deliver a solution that not only helps in mitigating noise, but also provides optimum fire safety performance."*



## 'Our Lady' shines brightly again, thanks to SIG Design Technology



Our Lady Help of Christians Catholic Church in Birmingham is among the most celebrated designs of renowned architect, the late Richard Gilbert Scott. This year, its distinctive obelisk

roof membrane has been restored to its prime, with the expertise of SIG Design Technology.

The church is a Grade II Listed building and noteworthy example of

'Brutalist' architectural design. However, the original copper foil faced bitumen sheet roof covering had deteriorated in recent years and is no longer manufactured.

The roof formation at 'Our Lady' also posed a challenging shape which meant the application of sheet metals would not work. In addition, the bitumen covering had bonded with the building envelope below it, making it impossible to remove without damaging the concrete.

Roofing contractors, The Rio Group, handled the project, which spanned a roofing area of approximately 1,800 sq. metres.

SIG Design Technology's Specification Managers advised the conservation architects on suitable replacement materials, and liquid waterproofing system Repoma<sup>®</sup>, exclusively supplied by SIG Roofing in the UK, was the ideal choice.

SIG Design Technology worked with the manufacturers to create a bespoke patina to match the original tint of the copper roof at its peak, in 1968. For more details, visit: <http://bit.ly/OurLadyChurchCaseStudy>





## Award-winning restoration for Old Court House

A historic building, derelict for 30 years and on the verge of collapse, has been brought back to its former glory thanks to an award-winning restoration.



The 15th Century Old Court House in Martley, Worcestershire now has a brand new roof and has been 'topped off' with five W T Knowles Chimney Pots. Three of the pots incorporate DFE Inserts and are just some of the 160 different products in an extensive range of Standard and Heritage style Chimney Pots produced by the company in Elland, West Yorkshire.

The project won the prestigious RIBA West Midlands Conservation award and the RIBA Project Architect of the Year Award 2018.

W T Knowles & Sons Limited has been manufacturing and supplying an extensive range of clay chimney pots, cowls and drainage products since 1906.

They still use many of the traditional clay moulding

techniques, producing both glazed and unglazed products. The business is still privately owned, run by 4th generation family, and is the only manufacturer of traditionally glazed chimney pots, which are renowned for their durability and longevity.



## Fast Flash® to the rescue at Plymouth Ferry Port



Danelaw's Fast Flash was the perfect solution for a challenging project in Plymouth Ferry Port.

The project involved three steel oil tanks suffering ongoing corrosion due to their exposed location at the port. With over 30 years of experience in the roofing industry, Paul Rosevear was asked to find a solution that would protect the top edge detail of the middle oil tank.

Originally the detail was painted, however this did not have the durability needed for the corrosive marine atmosphere. The other factor that needed to be considered was the flammable nature of the oil,

which meant applying the product to the tank could not involve heat or flames.

After a successful trial, it was clear Fast Flash was the perfect solution for the corroding edge detail. The project took 5 days to complete and Paul was delighted with the results: *"Fast Flash is very easy to apply and very sticky which helped. It had a neat and clean finish similar to lead."*

After successfully treating the first oil tank plans are now underway for the other two tanks to follow suit.



## Abandoned hospital gets new lease of life

An eerie old 19th century hospital in Stafford, which was falling apart, has now been transformed into beautiful apartments called St George's Mansions.

What was once an abandoned building with crumbling walls and floors is now totally unrecognisable.

Housebuilder Shropshire Homes took on the three-year project and was keen to keep the amazing history of the building alive. This is where Russell Roof Tiles came into their own.

The team at Russell Roof Tiles has worked on a number of re-roofing projects over the years and

they used their knowledge to supply a whopping 20,000 of its Lothian tiles in Slate Grey.

The tiles are part of Russell Roof Tiles' Natural Range and the product was able to match the look of the other natural slate tiles already on the roof. Plus, the concrete material is cost-effective and long-lasting too.

The restored building now looks amazing in its position looking over Stafford and will be able to do so for many years to come.



# It's personal

## How EU General Data Protection Regulations (GDPR) affect you

Although the GDPR came into effect on 25th May this year, many contractors still don't know what they are or how they affect their business. As the fines for non-compliance can be hefty (€20million or 4% of annual turnover - whichever is higher), it's definitely worth understanding what the regulations are and how to comply.

### What are the GDPR?

The GDPR are designed to give everyone greater protection over how their personal data is used by businesses.

The main element is that individuals must provide a company with 'explicit consent' to be contacted for marketing communications. In other words people must actively tick a box to agree to being contacted. They can also revoke this at any time.

The GDPR affects all companies in the European Union and also those based



outside the Union but with customers within the 28 member states.

How to make sure you comply:

- **Use 'Legitimate Interest' to help you find new customers**  
For example, you can send out flyers to advertise your company to a specific postcode or area. This would not affect the rules of the GDPR, as you are not using personal data to send these flyers out.
- **Ensure your privacy policy covers ALL types of marketing you currently use and make it freely available.**

A privacy policy outlines

how you use a customer's data and standard versions can be found on line.

You should also include a 'future marketing' clause. For example if you don't currently send direct mail campaigns, you might want to in the future.

- **Understand the right to be forgotten**

If a contact requests you erase ALL non-transactional data about them and states they no longer want to receive marketing communications then you must comply immediately.

Organisations such as the NFRC can be a good source of advice, visit [www.nfrc.co.uk](http://www.nfrc.co.uk) or call 020 7638 7663 for details.

Also, the Information Commission Office is the UK's independent authority set up to uphold information rights in the public interest and they provide a wealth of information, advice & support - on their website is a self-assessment toolkit created with small organisations in mind.

You can use their checklists to assess your compliance with data protection law and find out what you need to do to make sure you are keeping people's personal data secure. For details, visit: <https://bit.ly/2A10ayF>



## Top tips to comply with GDPR

- Add opt-in boxes to your website
- Create a way for customers to easily opt out of future marketing
- Make sure your database is fully secure and encrypted, with access limited to essential personnel
- Minimise the use of personal data in your marketing where possible (such as flyer distribution to postcode areas instead of to individual names)
- Adopt alternative marketing channels such as site and vehicle advertising to generate inbound leads
- Check that your privacy policy explains how a customer's data is used and who has access to it, as well as a 'future marketing' clause



## Guy Bruce new Managing Director for SIG UK Exteriors

SIG UK Exteriors, the UK's leading construction materials supplier, is pleased to announce the appointment of Guy Bruce as its new Managing Director.

With over 20 years of leadership experience, Guy joined SIG in July 2018 following eight years with leading global support services and Construction Company, Interserve plc.

Guy has international experience across the service, retail and manufacturing sectors and was previously the COO Designate and Commercial Services Director at Homeserve and Commercial Director at the Caudwell Group.

*"SIG UK Exteriors incorporating SIG Roofing is the market leading merchant of roofing products and services," said Guy. "We are the market leading specialist supplier of roofing materials providing high quality products, supported by unrivalled technical support and a commitment to provide first class service... supporting our customers in delivering innovative products at market leading prices.*

*We are a people business, so I am looking forward to meeting our customers, suppliers and stakeholders over the coming months to introduce myself and share some of the exciting plans we have for the business moving forward."*



For further information, visit [www.sigroofing.co.uk](http://www.sigroofing.co.uk) or follow @sigroofing on Twitter



## Roof rescuer named 'Local Hero'



A community-minded roofer has been nominated for the National Federation of Roofing Contractors' 2018 UK Roofing Awards.

John Davis of JD Roofing was recognised by staff at the SIG Roofing Wigan Branch for his generosity and kindness.

They said that John would often fit or replace elderly or less well-off people's roofs at a discounted rate or even for free. He also once fixed a pregnant woman's badly constructed roof free of charge, which cost him hundreds of pounds.

He has been nominated for the 'Local Hero' Award, which celebrates those who go above and beyond for their local community. The awards are sponsored by roofing products supplier SIG Roofing.

John said: "I am very flattered to have been a nominee for the award. I have always believed that we as humans should do as much as we can for people.

*If you can be a decent person and do someone a favour, I believe that it'll come back and reward you later in different ways.*

*I don't feel that I'm going out of my way, but I do feel that there's just not enough generosity anymore, so I like to try and do my bit when I can. There's no science behind it!"*



## SIG Roofing reaches major milestone for TRADE CLUB loyalty scheme

Since its inception three years ago, contractors across the UK have been able to earn points and secure discounts at SIG Roofing's 100+ branches through the company's TRADE CLUB programme. In fact, the scheme has been so successful it's now celebrating a key milestone after Roofcare South West became the 2000th company to benefit.

Stuart Base, Marketing Director for SIG Roofing, said: "We introduced our TRADE CLUB programme to reward our customers for their ongoing loyalty and to enhance their customer experience. This is all about giving something back. Loyalty cards can be used at any of our branches and

with access to the largest network in the UK, it means contractors can earn points wherever they are working across the country."

By joining the TRADE CLUB, contractors receive one point for every £1 spent in branch, with the opportunity to earn double points each month on selected own label products.

Christopher Marks, owner of Roofcare South West, commented: *"We have been using SIG Roofing for more than six years. The branch in Marsh Barton, Exeter always has what we need when we visit or within a few days of us ordering it, there's no reason to go anywhere else."*



For more information on joining SIG Roofing's TRADE CLUB loyalty programme ask for details in your local SIG Roofing branch or visit: <http://www.sigroofing.co.uk/tradeclub/>



## What's happening on Twitter



@nwrooftraining

SINCERE THANKS TO SIG ROOFING, WIGAN - Saved the day by transporting the generous contribution of Redland tiles to the brand new DMR Roofing Academy Wigan. The Eagle has landed @SIGRoofing @Redland @Redland\_Trainr #roofing #Northwest #apprenticeships



@RoofingToday

@ApexAnglia has been nominated for its inspiring acts of #generosity for the National Federation of Roofing Contractors' 2018 UK #Roofing Awards, sponsored by SIG Roofing. @TheNFRC @SIGRoofing <http://bit.ly/2xkgv0L>



@SIG Roofing

Check out @SIGDesignTech latest project, where Plymouth Market has installed the liquid waterproofing system Hydrostop AH-25! Find out all the information here: <http://ow.ly/r4vd30IP4OZ>





## SIG Branch Refurbs are in full swing

Contractors across the country, from Manchester in the north, Bristol in the west and Portsmouth in the south, are enjoying the improved layout, design and organisation that SIG Roofing's branch refurbishments are bringing.

There's still lots to do though and the huge investment programme is continuing in full swing. The Bath branch have just completed their refurb and held an Open Day on 10th October to celebrate. Contractors who visited the branch had the opportunity to enjoy a free breakfast and product demonstrations from Velux, find out about SIG Roofing's Trade Club and ONE Warranty, talk to Flex-R about the benefits of FIX-R EPDM for flat roofs and also hear from Armatool with their range of top quality hand tools. The SIG Industrial Roofing Centre (IRC) were also on hand to talk about their products and discuss how they can help roofers working on industrial projects.

Watch out for the Gloucester branch Open Day on the 18th October, where they'll have a

### Swansea



### Bath

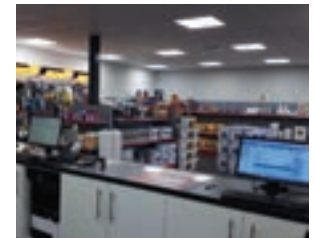
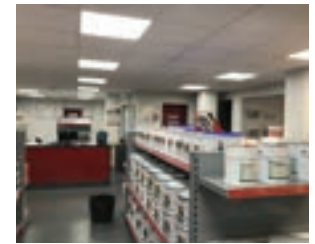


similar programme of demonstrations and industry experts available.

The Bristol St Phillips branch will be having their Open Day on the 1st November so make sure you get down there, and Swansea, Scunthorpe

and Nottingham will all be announcing theirs soon.

The Gateshead branch and Undercover Roofing Supplies in Rayleigh are both about to complete their refurbishments so watch out for their Open Days coming up.



SEE BELOW FOR OUR LATEST OPEN DAYS

It's also exciting times for Greenjackets in Weybridge and the Exeter branch, who are both about to start work on refurbishing.



## SIG ROOFING Open days

We've joined industry leading suppliers to bring you the very latest products and advice, so you can gain handy new tips and skills. Come along to one of our open days shown:

For more details, please contact the branch.

### Gloucester

Thursday 18th October 2018  
7:00am to 11:30am

Unit 25 Eastern Avenue Trading Estate  
Eastville Close  
Gloucester GL4 3SJ

### Bristol St Phillips

Thursday 1st November  
8:00am to 12:30pm

Camwal Road  
St Phillips  
Bristol BS2 0UZ

FREE BREAKFAST



# WHERE CAN YOU FIND AN INSIGHT APPROVED STOCKIST?

## SCOTLAND

Aberdeen	AB16 5UU	01224 692000
Ayr	KA8 8BL	01292 262885
Broxburn	EH52 5NN	01506 857613
Dundee	DD2 3QQ	01382 833011
Edinburgh	EH6 7LF	01315 542554
Glasgow	G71 6LL	01698 817428
Inverness	IV1 1SY	01463 250318
Kirkcaldy	KY1 2YX	01592 654913
Linwood	PA3 3BQ	01505 321122
Melrose	TD6 ORS	01835 823640

## NORTH WEST

Blackpool	FY3 7UN	01253 398376
Bolton	BL3 2NH	01204 523336
Leyland	PR26 7QL	01772 453939
Liverpool	L9 7ET	0151 5212100
Manchester	M34 5LR	0161 3203456
Wigan	WN3 4BT	01942 615030

## CHESHIRE ROOFING SUPPLIES

Crewe	CW2 8UY	01270 251 000
Warrington	WA4 4EZ	01928 796 100

## TYNE AND TEES

Gateshead	NE8 3AD	01914 779474
Middlesbrough	TS2 1DF	01642 242753
Stockton	TS18 2PH	01642 677772

## YORKSHIRE

Bradford	BD3 9HB	01274 392433
Grimsby	DN31 2SG	01472 245667
Huddersfield	HD3 4JW	01484 653373
Hull	HU4 6PA	01482 574577
Leeds	LS12 6AB	01132 631263
Leeds	LS9 0PF	0113 2351441
Rotherham	S60 1DA	01709 835500
Scunthorpe	DN16 1DQ	01724 854444
York	YO30 4UU	01904 476319

## MIDLANDS

Birmingham	B11 2FE	01217 081515
Birmingham	B19 1ED	01215 239143
Coventry	CV6 6FG	02476 688754
Derby	DE24 8HL	01332 349155
Dudley	DY2 0RL	01384 472420
Leicester	LE18 4TA	01162 785262
Newark	NG24 2EQ	01636 611880
Nottingham	NG7 2NN	01159 851400
Stoke	ST4 2NL	01782 280567
Telford	TF1 5ST	01952 641161

## WEST

Bath	BA1 3EN	01225 483828
Bristol	BS2 0UZ	01179 710085
Bristol	BS5 9RD	01179 412412
Bristol	BS3 2TN	01179 663072
Gloucester	GL4 3SJ	01452 521 347
Hereford	HR2 6JT	01432 273084
Oxford	OX2 0ES	01865 790303
Reading	RG30 4BJ	01189 455454
Swindon	SN2 8XA	01793 613339

## WALES

Cardiff	CF24 5HB	02920 483939
Porth	CF39 9SJ	01443 681004
Swansea	SA5 7LF	01792 790272

## ANGLIA

Bedford	MK41 9QG	01234 325283
Cambridge	CB22 7QP	01223 872260
Colchester	CO2 8JX	01206 877460
Great Yarmouth	NR31 0LY	01493 659991
High Wycombe	HP12 3RJ	01494 450079
Ipswich	IP1 5LU	01473 749621
Kings Langley	WD4 8JU	01923 269983
Kings Lynn	PE34 3AJ	01553 764202
Luton	LU1 3XL	01582 724837
Northampton	NN5 5JF	01604 765684
Norwich	NR3 3ST	01603 487860
Peterborough	PE1 5YB	01733 345004
Southend	SS9 5PR	01702 425213
St Ives	PE27 3YJ	01480 467776
Waltham Cross	EN8 7DZ	01992 624938
Southend	SS2 5QW	01702 613 181

## LONDON

Cheam	SM3 9AG	020 8337 9455
Croydon	CR0 2BD	020 8686 6911
Croydon	CR0 4YZ	020 8689 0481
Kentish Town	NW5 3EW	020 7485 5550
Park Royal	NW10 7UL	020 8507 4380
Romford	RM7 0HL	01708 754022
Romford	RM3 8TS	01708 377666
Slough	SL1 4BG	01753 570526
South Harrow	HA2 8AX	0208 426 8838
Stratford	E15 2RW	020 8536 5400
Tottenham	N17 8HJ	020 8808 6816

## UNITED TRADING COMPANY

Chingford	E4 7HZ	020 8559 4334
-----------	--------	---------------

## UNDERCOVER ROOFING SUPPLIES

Rayleigh	SS6 7XF	01268 798 999
----------	---------	---------------

## SOUTH EAST

Finchampstead	RG40 4RB	01189 733788
Folkestone	CT19 5EY	01303 226888
Gravesend	DA12 2PS	01474 532999
Hastings	TN38 9ST	01424 853099
Horsham	RH12 2NW	01403 270640
Hove	BN3 7ES	01273 328640
Leatherhead	KT22 7LF	01372 361600
Lewes	BN7 2BQ	01273 488888
Maidstone	ME15 9NL	01622 843399
Milford	GU8 5BB	01483 425828
Ramsgate	CT11 7QE	01843 592772
Sidcup	DA14 6QF	0208 302 5451
Sittingbourne	ME9 7NU	01795 843967
Tunbridge Wells	TN2 3DY	01892 515599
Worthing	BN14 8NW	01903 201013

## GREENJACKETS

Hanwell	W7 2QD	020 8571 6555
Weybridge	KT15 2SD	01932 850500
Woking	GU21 3BA	01483 215100

## SOUTH COAST

Bishops Waltham	S032 1BH	01489 896544
Bournemouth	BH12 4BJ	01202 731867
Eastbourne	BN23 6QN	01323 500458
Poole	BH15 4BN	01202 682491
Portsmouth	PO3 5AY	02392 690214
Southampton	SO15 0LG	02380 365555
Waterlooville	PO7 6QX	02392 258344

## SOUTH WEST

Exeter	EX2 8PY	01392 250323
Newquay	TR7 2SX	01637 852660
Plymouth	PL1 4LL	01752 509538
Taunton	TA1 5LY	01823 323888
Torquay	TQ2 7BD	01803 613212

## OVER 100 BRANCHES NATIONWIDE OFFERING

- Over 40,000 roofing products
- Supply of leading brands
- Delivering the products you need, when you need them - nationwide
- Dedicated Industrial Roofing team
- Accredited contractor scheme for flat roofing

For editorial enquiries please contact the editor at [insightnews@sigroofing.co.uk](mailto:insightnews@sigroofing.co.uk)

Any views and opinions expressed are solely those of the author and do not necessarily reflect those of INSIGHT Newsletter from SIG Roofing. All rights reserved. No copying by any means is permitted, except when permission is given in writing by INSIGHT Newsletter from SIG Roofing. The publication contains manufacturer's product information that is reproduced by INSIGHT Newsletter from SIG Roofing in good faith, based on the latest knowledge available. While every effort has been made to ensure that the information is current and correct, INSIGHT Newsletter from SIG Roofing cannot accept responsibility for the application and performance levels of the products featured. Neither can we accept responsibility where the manufacturer's instructions have not been followed. © INSIGHT Newsletter 2018.